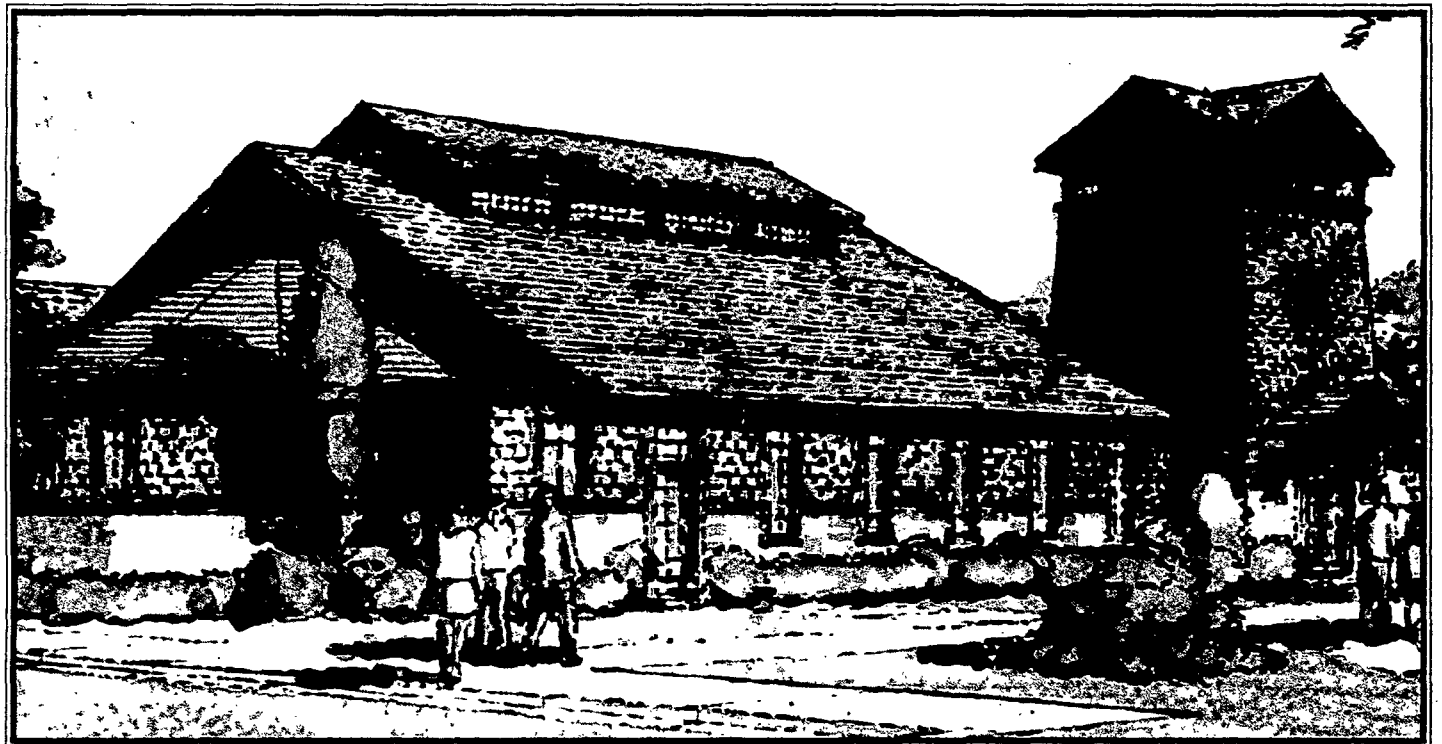


What Are Your Neighbors Saying About Cherry Ridge?

Effie & Joe Wysocki - Future Residents



The Wysocki's will enjoy the variety of amenities easily accessible in the Community Center including a fitness center, library, cafe, activities room, country store, beauty/barber shop, and much more.

Joe and Effie Wysocki are planners, looking for a secure, worry-free retirement future. "When I think about the future, I want to be as happy as I can," says Effie. "And it gives me a positive feeling knowing Cherry Ridge is backed by St. Ann's Community."

Effie experienced St. Ann's firsthand when she underwent rehabilitation therapy for her hip. "I was so impressed with the quality care I received at St. Ann's that I referred several friends to their health care services," Effie explains. "They're reliable, down-to-earth people and I really have a sense of security knowing they are behind Cherry Ridge."

Additionally, the Wysocki's love the location. "We've lived in Webster since 1967 when Joe was transferred with Xerox," she says. "We're already familiar with the area and we'll still be close to our friends."

Plus, Effie likes the natural surroundings of the Cherry Ridge campus. "There are lots of trees and I'll enjoy watching the wildlife the area will support," she notes.

The Wysocki's are also looking forward to the flexibility afforded at Cherry Ridge, from the maintenance-free lifestyle to the wide variety of services and amenities to choose. "We aren't locked into a schedule with the services at Cherry Ridge," she explains. "It's up to us to decide how often we want to use them."

With the strong tradition of St. Ann's, a beautiful and familiar location, and flexible options, the Wysockis are looking forward to the future. "I have a really good feeling about Cherry Ridge," she says. "There are lots of good things happening here."