

St. Mary's Hospital 140th Anniversary



Daughters of Charity establish vision

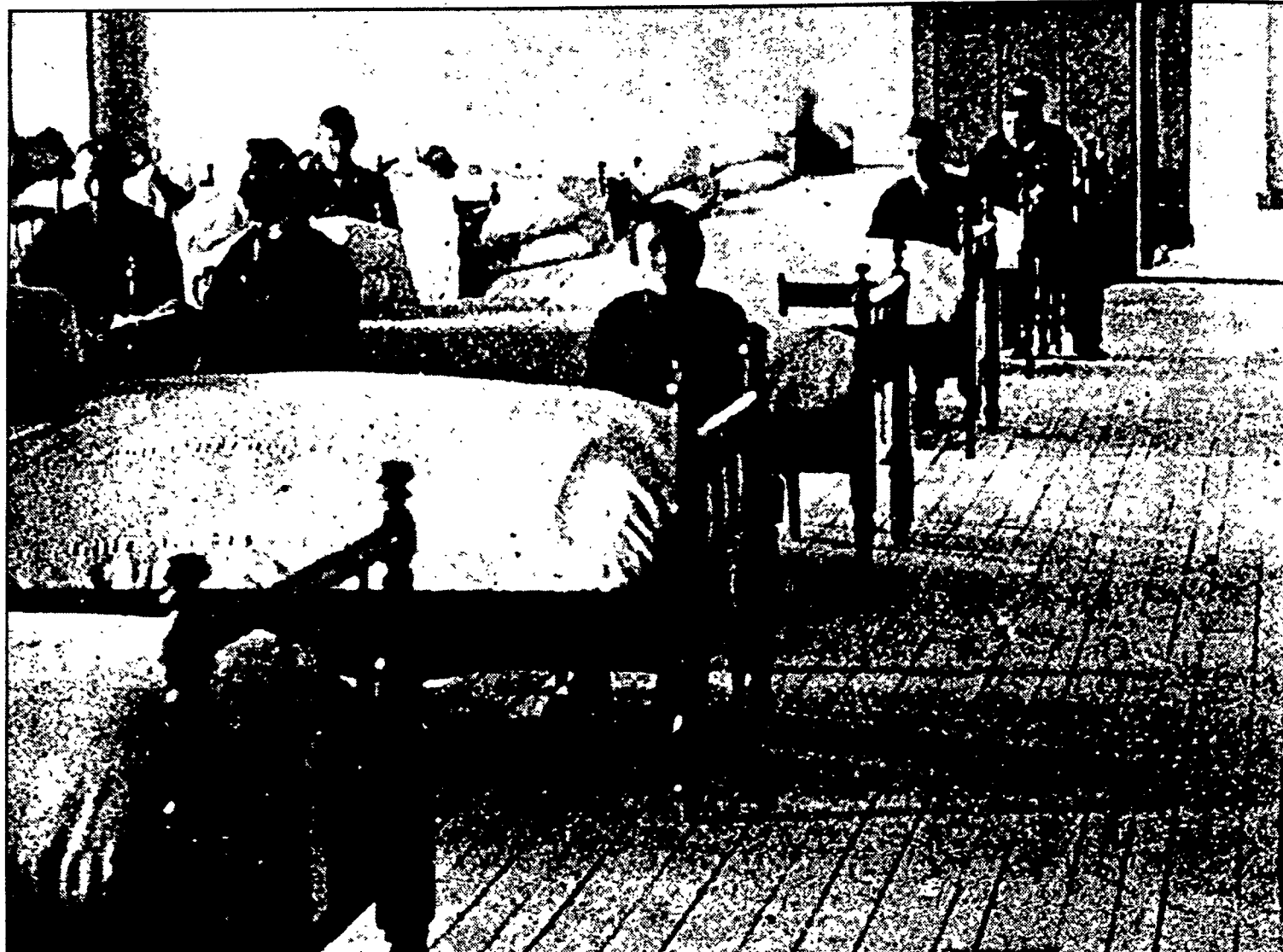
Sister Hieronymo O'Brien traveled to Rochester with two other sisters to open St. Mary's Hospital. Together the three treated the first patient admitted to St. Mary's Hospital on Sept. 15, 1857.

Sister Hieronymo, whose name was Latin for Jerome, was a visionary committed to St. Mary's. She often made public appeals for assistance to keep the hospital viable. Her tireless efforts were instrumental in sustaining St. Mary's through challenging times.

During the hospital's first year amid sacrifice, poverty and hardship, 250 patients were served. The medical staff consisted of five physicians.



1863: This new building was constructed amid the Civil War to accommodate the increasing number of soldier patients. During 1863-1864, St. Mary's was officially declared a government hospital. The U.S. government paid St. Mary's \$2.50 a week for each soldier treated.



During the Civil War, 1861-1865, an immense number of crippled, sick and suffering soldiers drifted in. One newspaper account reported 650 admissions delivered by stretcher from the train station on a single day. The number of soldiers were so great that civilian patients had to be moved to a building across Genesee Street as the hospital was given totally over to the care of servicemen.



1865: To control expenses, St. Mary's purchased a farm in Gates, just four miles from the hospital. The farm provided poultry, dairy products, fruits and vegetables for the hospital's patients until 1940, when it was sold to help finance another new building. At left, a Daughter of Charity feeds the farm's chickens. In the photo above, the farm's manager prepares for a delivery.



Mercy Medical Equipment & Oxygen
An Organization of the
Mercy Health System of Western New York

Specializing in:

**WHEELCHAIRS/WALKERS/OXYGEN/BEDS
WHEELCHAIR LIFTS/RAMPS/STAIR LIFTS
HANDICAPPED ELEVATORS**

Stop by and visit our new showroom located at:

2170 Union Road
West Seneca, New York 14224
(716)656-0195 Fax (716)656-1330
1-800-834-4311



What a Woman Wants.

Southside created the Women's Center for your special needs, with a soft, feminine setting and a caring, professional staff. Carol, Ellen and Lynn are women who listen, and understand.

Mastectomy

Breast Forms and Bras.
Styles and sizes for your lifestyle.
Post-Mastectomy Swimwear.
Fit, form, function — and fashion!
Eye-Catching Caps.
Conceal temporary hair loss.

Maternity

Abdominal Support, to relieve back pain.
V Supporter, for vulvar varicosities.
Specialized Support
Compression Hosiery.
Panty hose, casual legwear and prescription stockings.
Post-surgical garments.
Certified fittings to your physician's order.

Southside WOMEN'S CENTER

PROFESSIONAL FITTINGS • MASTECTOMY
• MATERNITY AND SURGICAL •
244-3340 Mon.-Fri. 8:30-5:30
Saturday 9:00-2:00
1655 Elmwood Avenue, Suite 135
At South Clinton, with ample free parking.

Congratulations St. Mary's Hospital on 140 years

Elmwood Medical Associates, P.C.

Internal Medicine

Robert C. McVeigh, M.D. • Nino M. Trunfio, M.D.
Joseph M. Marino, M.D. • Waseem N. Ghazoly, M.D.

1650 Elmwood Avenue • Rochester, NY 14620
716-473-8309