

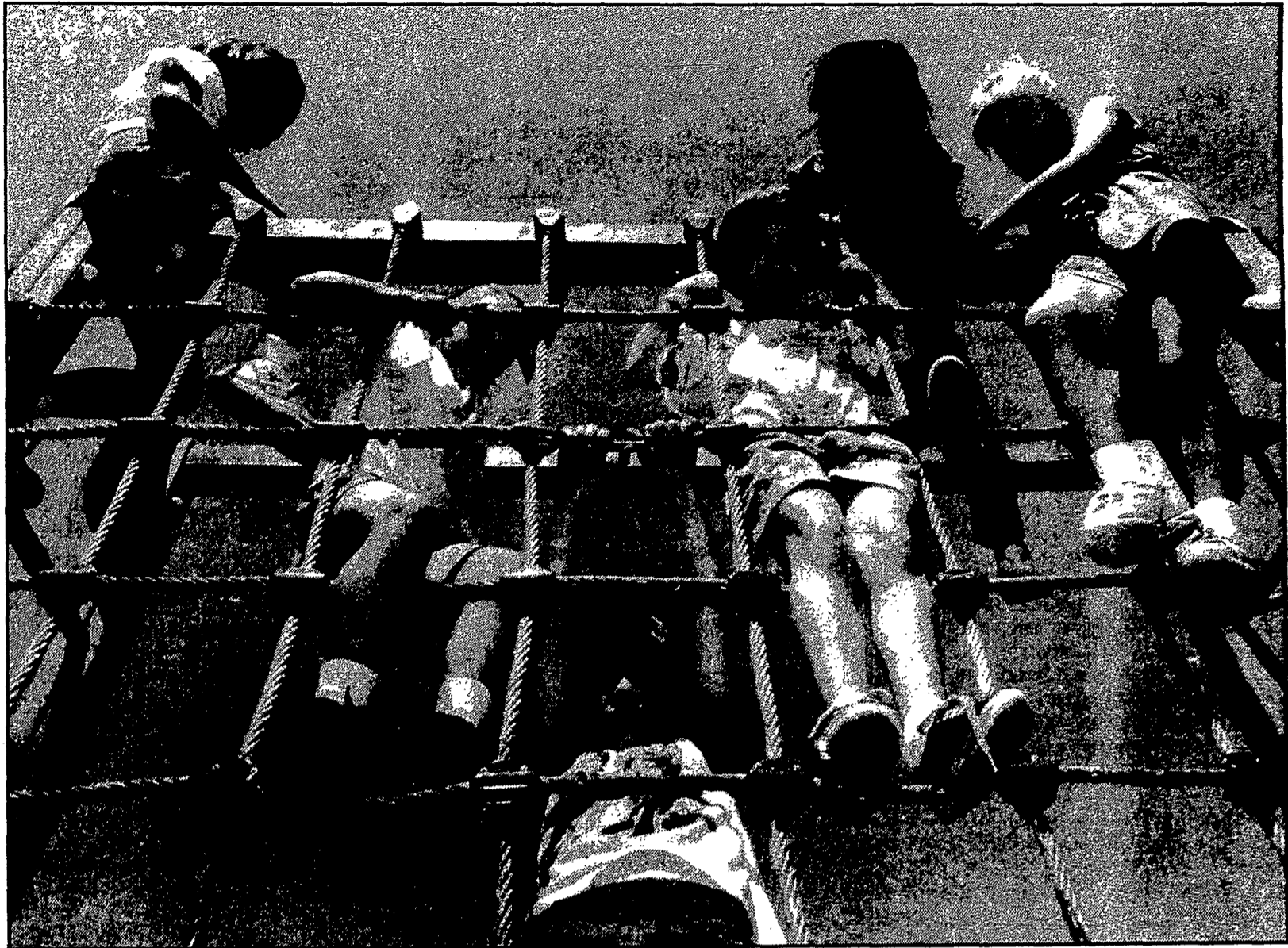
St. John's christens new park

Rochester's St. John The Evangelist School, 545 Humboldt St., dedicated a new playground and park in May for students and neighborhood children. Playground funds were raised through an alumni event, magazine drive and 'mini-marathon.' The playground was created and constructed by parents, students, parishioners, faculty and neighbors. (Photo at right) First-graders hang out on the ropes during the last week of school in June.

Photos by

S. JOHN WILKIN

Staff photographer



(Top) Caroline Moore makes her way through a tunnel, while Samantha Miller (right) gives her arms a workout. The carved-wooden sign (above) offers a welcoming touch to the new community playground.



Sierra Robinson hangs by one arm on as she grabs for the last bar on the jungle gym.