

## IT'S EASY TO SAVE ENERGY AND MONEY WITH COMPACT FLUORESCENT BULBS.

Here's one of the simplest ways yet to do your part toward making your home more energy efficient. Just replace a regular incandescent light bulb with a screw-in compact fluorescent bulb. You'll use up to 75% less energy and still have the same level of light.

Compact fluorescent bulbs last ten times longer than regular bulbs. That means you'll continue to use up to 75% less electricity for as long as five years or 10,000 hours.

**Save ten dollars on the purchase of each bulb with rebates from RG&E.**

Best of all, we're offering money-saving rebates to all our residential electric customers. So you'll receive rebate forms, each worth ten dollars off the price of any compact fluorescent bulb 15 watts or more. Watch your mailbox. They'll be arriving soon.

**It's easy to choose the compact fluorescent bulb that's right for you.**

You can use compact fluorescents in table lamps, ceiling fixtures, even in sealed outdoor fixtures. They're quiet. And they produce a warm, high quality light with excellent color rendition.

This chart will give you a glance at how compact fluorescent bulbs compare to regular incandescent and the savings you'll get by switching. Saving energy and money. It's that easy with RG&E.

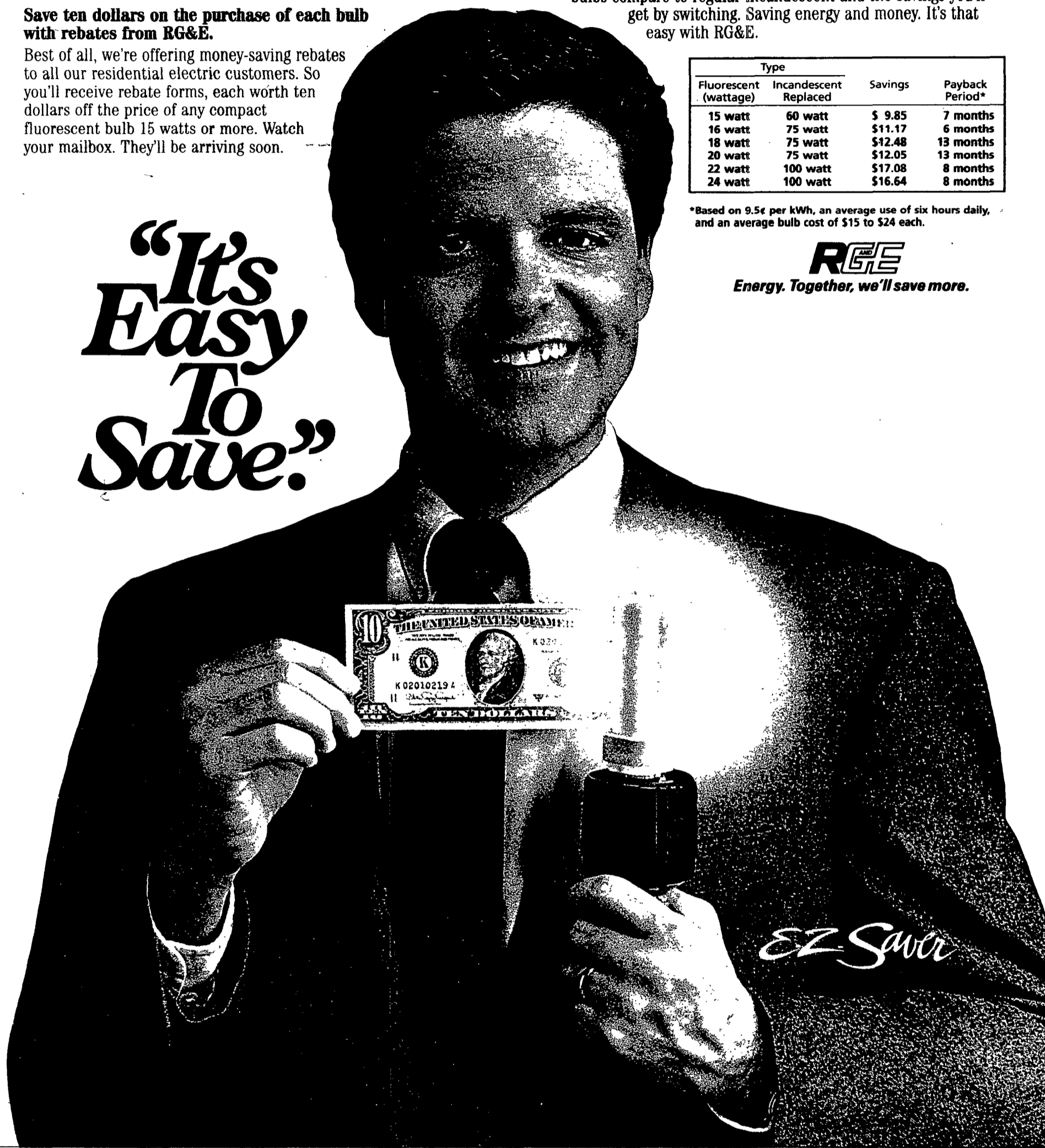
Type		Savings	Payback Period*
Fluorescent (wattage)	Incandescent Replaced		
15 watt	60 watt	\$ 9.85	7 months
16 watt	75 watt	\$11.17	6 months
18 watt	75 watt	\$12.48	13 months
20 watt	75 watt	\$12.05	13 months
22 watt	100 watt	\$17.08	8 months
24 watt	100 watt	\$16.64	8 months

\*Based on 9.5¢ per kWh, an average use of six hours daily, and an average bulb cost of \$15 to \$24 each.

**RG&E**

Energy. Together, we'll save more.

*"It's Easy To Save."*



You can find energy-efficient compact fluorescent bulbs at these participating retailers.

Abert's Hardware  
Aero Hardware  
Alleghany Log Homes Inc.  
Atōica Auto & Hardware  
Belfast Hardware  
Beukman's Hardware  
Burke Hardware & Equipment  
Carter Hardware  
Cato Hardware  
Chase-Pitkin  
Connors-Haas Electric  
Country Gentleman Servistar  
Crown Electric Supply Co.  
Debbie Supply Inc.  
Ebert's Energy Center  
Electrical Products Unlimited

Empire Electric Supply Co.  
F.A. Church  
Fairport Home & Garden Center  
Family Hardware Store  
Farmington Farm & Garden  
Farmington True Value  
Fassett Lane Lumber Inc.  
Ferguson Hardware  
Gates Electrical Supply  
Geneseo Hardware  
Hardware Haus  
Harrington's  
Hechinger  
Hegedorns  
Hilton Big M  
Hofcomb True Value Hardware

Howden's Hardware  
Hunt's Hardware  
J. Walter Caves  
Kevin Russell Hardware Inc.  
Kovalsky-Carr Electrical Supply  
Lauterbach Servistar Hardware  
Lipinski Brothers  
Lori's Natural Foods Center  
Lyell Crest Hardware  
Maine Home Centers  
Marion Agway Inc.  
Mayer Hardware  
Mayer Paint & Hardware  
Maynard's Electric Supply  
Mendon True Value Hardware  
Monroe Servistar Hardware

Montgomery's Building Supply  
Moran's Servistar  
Neale's True Value Hardware  
New Life Herbs  
Niels Iversen Lumber Co.  
Nunda Lumber & Hardware  
Ozone Brothers  
Penfield Hardware  
Pike Red & White Store  
Prattsburg Hardware  
Pride True Value Hardware  
PSC Lamp  
Rochester Lumber Co.  
Rochester Tiffany & Lighting  
Russell Hardware Co.  
Russell Servistar Home Center

Schneider's Trustworthy Hardware  
Scottsville Hardware & Paint  
Servistar Hardware  
Simmons Hardware  
Sodus Country Hardware  
Sortore Deli  
Sova's Plumbing, Electric & Heating  
State Street Hardware  
Strong's Livonia Hardware  
The Country Hardware  
The Village Hardware  
Van Brooker Super Market  
Victor Coal & Lumber  
Viele's Inc., Agway  
Wal-Mart  
Ward's Lumber

W.E.B. Stull, Inc.  
Wegman's  
Wehle Electric  
Weider's Hardware & Home Center  
WESCO  
W.G. Handyside Store  
Wickes Lumber  
William Hamilton & Son, Inc.  
Williamson Hardware  
Wilson Hardware  
Wolcott True Value Hardware  
Zims Lumber & Stoves