

Construction begins on permanent shelter

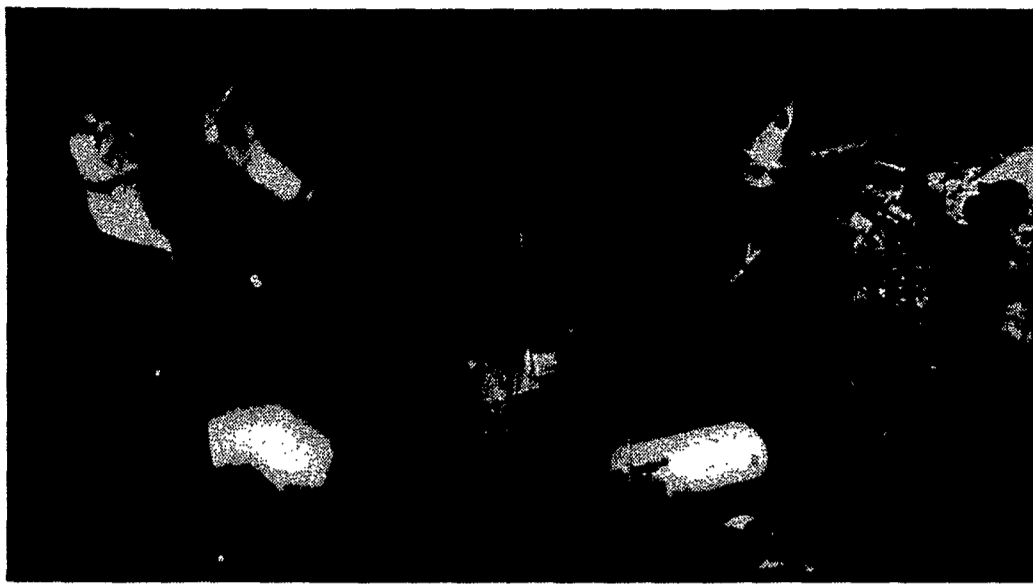
By Rob Cullivan
Staff writer

ROCHESTER — Construction began last week to convert a three-story warehouse downtown into the Francis Hospitality Center, a 24-hour shelter for homeless men. The shelter will be operated year-round by the Catholic Family Center.

During a Nov. 2 press conference at the warehouse, 547 Joseph Ave., William H. Privett, associate director of the CFC, noted that construction was already under way.

The cost of buying and converting the building will be more than \$780,000, with the bulk of funds coming from the New York State Homeless Housing Assistance Program. The City of Rochester, Monroe County and various private foundations provided additional monies. Another \$43,000 was donated by diocesan parishes, Privett said.

E. Porter General Contractors, Inc., was chosen for the job of converting the building into a homeless shelter, Privett said, pointing out that Porter's offices are located across from the warehouse on Joseph Avenue. Although he said that "we are pleased that a neighborhood firm ... is our contractor," Privett noted that using a



Babette G. Augustin/Staff photographer
Construction worker Walt Pennington checks on the electrical wiring in the basement of a warehouse that will be converted into the Francis Hospitality Center.

neighborhood contractor was not an intentional move on the CFC's part.

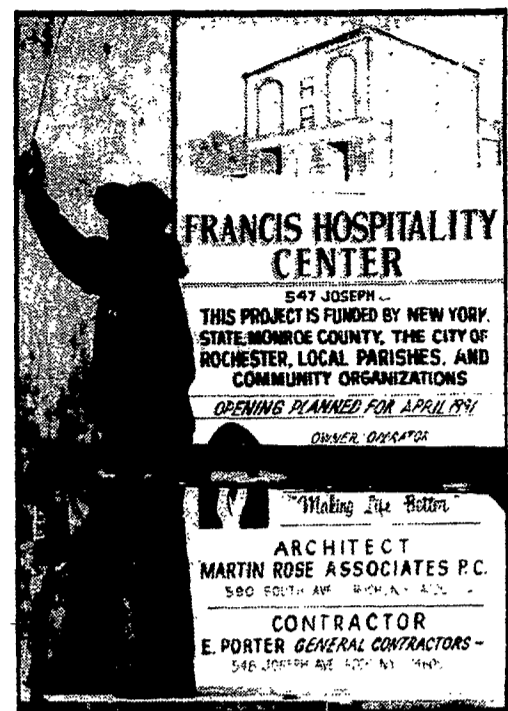
Upon completion, the new shelter will provide long-term beds for as many as 24 men, and six emergency beds for overnight guests. Meals, social services, housing information, case assessment and mental-health assistance referrals will also be

available to the guests, Privett said.

He added that men staying at the Francis Center on a long-term basis will pay for their beds through public assistance, veterans' benefits or employment.

The Francis Center is scheduled to open next April, Privett said, adding that this

Continued on page 18



Art King, who works for E. Porter General Contractors, Inc., makes final adjustments on the Francis Center sign during a Nov. 2 press conference. The shelter is slated to open in April, 1991.

Knights' signature drive shows support for network

By Lee Strong
Staff writer

ROCHESTER — Eight thousand to 9,000 Rochester-area residents want Greater Rochester Cablevision to offer the Eternal Word Television Network, according to Knights of Columbus Finger Lakes Chapter # 178.

If the wishes of those people are not met and EWTN is not added to the cable company's offerings, the Knights might consider calling for a boycott of GRC, chapter officials said.

The residents — mostly current GRC

subscribers — expressed their interest in EWTN by signing petition forms during a Sept. 15-Oct. 14 campaign the Knights conducted in 66 parishes within the GRC service area.

The Knights said the petition forms were also signed by an additional 1,000 people who do not currently subscribe to GRC's service but said they would do so if EWTN were offered.

EWTN is a Birmingham, Ala.-based Catholic cable network founded by and operated by Mother Angelica and her order, the Poor Clares of Perpetual Adora-

tion. The network offers religious speakers and programs, talk shows, and family entertainment specials.

Paul Alfano, president of the Knights' chapter, said his organization will submit the signed petition forms to GRC as soon as they have all been collected and counted. Approximately 10,000 forms were signed during the campaign, he said.

Alfano said he plans to meet with the cable system's president to urge that EWTN be added to the schedule. No date has been set for that meeting.

The signature campaign, which was en-

dorsed by Bishop Matthew H. Clark, was intended to prove that a significant number of Rochester-area residents were interested in the Catholic television network, Alfano observed.

"The thrust that we have is they (GRC) ... have a variety of programming that is not religious in nature," Alfano said.

In addition to its religious programming, EWTN also offers a variety of material that is appropriate for a general audience, Alfano noted.

"If you look at the wide variety of programs that EWTN offers, there's something for everyone," Alfano said.

The signature campaign is the Knights' first coordinated effort to get EWTN on GRC's schedule, Alfano said. In previous years, the local council had paid the cable company to carry some EWTN programs. He said the Knights had hoped that these sample programs would lead local viewers to ask GRC to carry the network regularly. After that effort failed to produce the desired results, the Knights opted to mount the petition drive, he said.

The cable system, which currently serves approximately 170,000 subscribers, is in the process of collecting results from its own survey of subscribers' programming preferences. According to company officials, the results of that survey will be

Continued on page 18

Diocesan division director resigns from position

ROCHESTER — Rebecca Gifford, director of the Diocese of Rochester's Division of Urban Services, has submitted her resignation, effective Dec. 4, 1990.

Gifford, who became the division's director July 1, 1988, has accepted a position with the United Neighborhood Organization in Los Angeles. She has been working with the organization since Sept. 4 during an educational leave from her diocesan post.

Brother Luis Ruberté, who has served as the division's acting director during Gifford's leave, will continue in that position until a new director is named.

According to Father John Mulligan, moderator of the Pastoral Center and Gifford's predecessor as the division's director, her decision did not come as a com-

plete surprise to diocesan officials.

"We knew Becky (Gifford) was interested in community organizing," Father Mulligan said. "I sensed in a way a certain risk in her going there (the United Neighborhood Organization) for her leave."

Gifford first joined the Division of Urban Services as a part-time administrative coordinator in 1981. She served as a part-time consultant for the division from June, 1984, to June, 1985, then became associate director for program and staff development in July, 1985. She served in that position until she assumed the directorship in 1988.

Father Mulligan noted that Gifford brought to the division "a deep spirit of caring for the the disadvantaged and poor and a real spirit of justice."

In addition, Father Mulligan said Gifford emphasized listening and collaborative ministry with urban parishes. "She tried to go out and listen to what parishes needed," he said.

As part of Gifford's efforts, he said, she tried to develop local leadership and expanded the division's staff, adding Donn Harding as Inter-Parish Structural and Mechanical Coordinator and Ha Nguyen as coordinator of ministry among Vietnamese. Other office staff members were also given greater responsibilities in their positions, Father Mulligan noted.

— Lee Strong

★ HOTELS ★ CAR RENTAL ★ SENIOR PASSBOOK FARES ★ RESORTS ★

HAWAII

★ ALL INCLUSIVE ★ CRUISES ★ ALL INCLUSIVE ★ AIR ONLY ★ ESCORTED TOURS ★ AIR ONLY ★

AMERICAN HAWAII CRUISES

"CRUISE PARADISE"
See all of the Hawaiian Islands in 7 Days!

Feb. 16 - School Break
Apr. 20 - School Break
May 25 - Last Date with '90 rates
Aug. 3 - Children Free
Nov. 30 - Pearl Harbor Anniversary

EXCELLENT GROUP RATES

RESERVE EARLY...
And receive 2 night FREE in a Waikiki Hotel plus up to an extra \$200 OFF on cabin savings.

CALL TODAY FOR DETAILS AND A BROCHURE
889-9090
3220 Chili Ave.

Jean Brown Travel Inc.

With the U.S. Constitution and the B.S. Independence are American built, rugged and shined vessels.

UNPACK ONLY ONCE!

★ TRAINS ★ WEEKEND SPECIALS ★ COMMERCIALS ★ GROUPS ★

Eureka Ironsides™ Power Team

SALE ENDS NOVEMBER 30th

4.0 Peak H.P. Motor
• All Steel Canister Construction
• Two-Motor Power Team
• Roto-Matic® Powerhead With Power Driven Vibra-Groomer II® Deep Cleans & Grooms
• Automatic Cord Rewind
• Power View
• Automatic Carpet Height Adjustment
• Edge Kleener® On Both Sides
• Tool Pak® With Dust Cover

\$110 OFF
\$219.95

The BOSS™ Upright
The Lowest Priced ESP®
Ever From Eureka
\$70 OFF **\$95.99**

6.5 Amp ESP® Motor
• Cuts Cleaning Time In Half
• 6.5 Amp ESP® Extra Suction Power® Motor
• 6 Position Carpet Height Adjustment
• Chromed steel beater bar brush roll deep cleans & grooms

Mighty Mite® Canister
3.0 Peak H.P. Motor
• Powerful Yet Compact, Lightweight, Portable
• 7-Piece Deluxe Above-The-Floor Cleaning Tools
• Tool Pak®

\$79.95

SEW & VAC REPAIR
724 WINTON RD. N. — 482-6111