

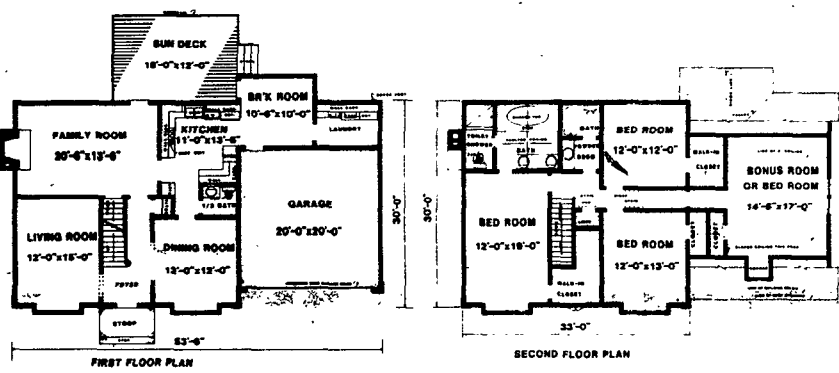
Luxury Master Bath Features Vaulted Ceiling
**POPULAR EUROPEAN STYLE PLAN FEATURES
 ORNATE EXTERIOR TRIM**

FEATURE HOMES
 © By W.D. FARMER, A.L.B.D.
 A formal entrance foyer allows excellent passage to the formal living or dining room as well as to the gracious family room to the rear. The family room is shown with a fireplace at the end of the home and allows entrance to the basement or the rear sun deck. The kitchen is

close by and cabinets are in abundance. A spacious breakfast room is shown, also with access to the sun deck, as well as the double garage and the separate laundry room. A central half bath is included for daytime convenience on the first floor. There are three bedrooms upstairs, all with excellent closet space, the master bedroom having access to the luxury bath

with separate shower and commode area. The bonus room also may be finished as a bedroom either during construction or later by the household handyman. The exterior style is constructed of stucco and the windows are multi-lite accented by wood panels between. Corner quoins are added to enhance the beauty of this plan and a dormer window is shown for extra light to the bonus room.

This is a computer generated plan. The plan is Number 2550. It includes 2,586 square feet of heated area. All W.D. Farmer plans include construction details for energy efficiency and are drawn to meet FHA and VA requirements. For further information write to W.D. Farmer, P.O. Box 450025, Atlanta, GA 30345.



If you're 55 years or older, we'd like your input on a Rochester based retirement community that would consist of small homes, townhouses and highrises with all conveniences. This is strictly a survey of your interests. As you may know the median retirement age is growing at a rapid pace, yet availability of such a community is not. We'd like your opinions including location ideas.

Call us at 244-5940 or Write Farash Home Improvement, 2815 Monroe Ave., Rochester, NY 14618.

Another innovative idea from Farash.

We are also involved in all phases of home improvement, and build quality homes - your plan and land or ours. Financing available.

DON'T MISS THE BOAT!
 TAKE YOUR PICK OF UP TO

\$10,000

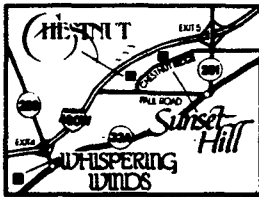
WORTH OF OPTIONS, FREE!

Our second annual picnic at Chestnut has come and gone. We want to thank everyone for making it a success and we look forward to doing it again next year.

Your Ship's Come In
 If you missed the party, don't feel left out. We've saved a voucher worth up to \$10,000* for you. Choose which options you'd like in your new Sunset Hill, Chestnut, or Whispering Winds home—fireplace, skylights, air-conditioning and more can be yours free. But only if you pick up a voucher at our Chestnut or Whispering Winds model homes soon. Vouchers expire Oct. 31, 1989.

Bring the Whole Crew

The invitation is open for you and your family. Stop by and see why the best move in Rochester is to a Perna Home.



Walking paths, open vistas, crisp country air—this is the setting for your dream home. See for yourself. But do it soon. We've got \$10,000 that says now is the time to make your move. Model hours at Chestnut and Whispering Winds are 2-7pm Mon-Thur, 12-5pm Fri-Sun.



**SENIORS & ELDERLY...
 ADD UP THE PLUSES
 OF LIVING IN
 RHA APARTMENTS!!**

- + convenient locations
- + low, affordable security deposits
- + activities, crafts, shopping trips and outings
- + pay one price for your housing, including utilities
- + available home and health care when you need it
- + rent based on income

**MANY UNITS AVAILABLE NOW
 CALL 235-3820 FOR
 INFORMATION AND
 APPLICATIONS**

**Rochester Housing Authority
 140 West Avenue
 "equal opportunity"**

To advertise in the Catholic Courier's new Real Estate section, call (716)328-4340.