

# 'Follow the Year'

continued from Page 11

to His Father in Heaven. And an Angel came and gave Him strength.  
Great Ra-pha-el, Archangel bright,  
Sends down pure rays of healing light;  
As springtime comes and greens the earth  
And out of darkness comes new birth,  
God's healing Angel lights our way  
To understand His Word this day.

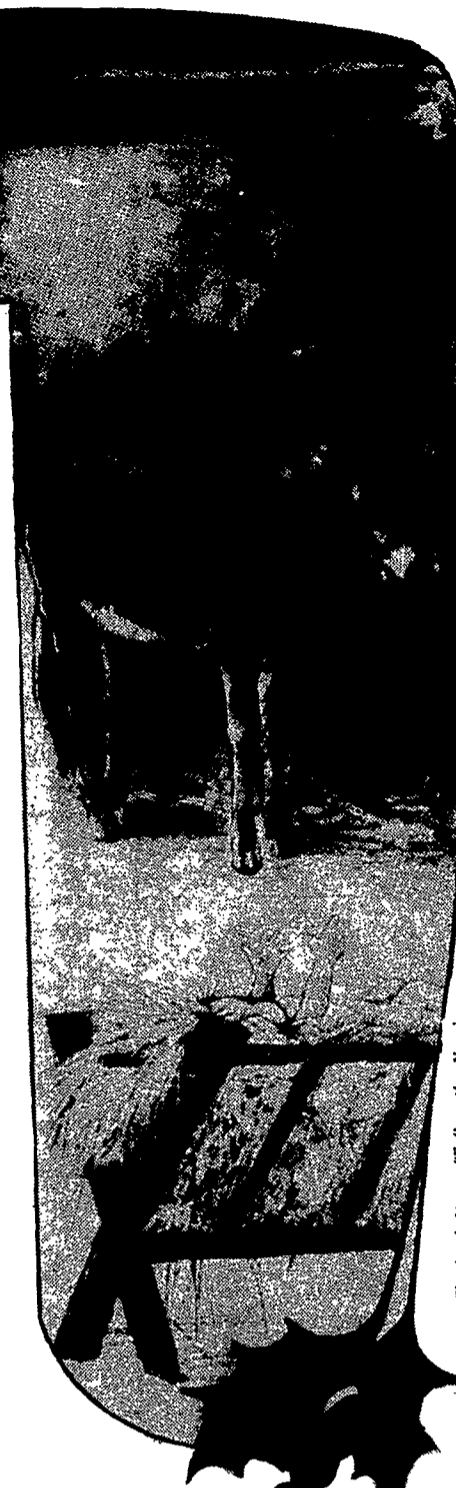
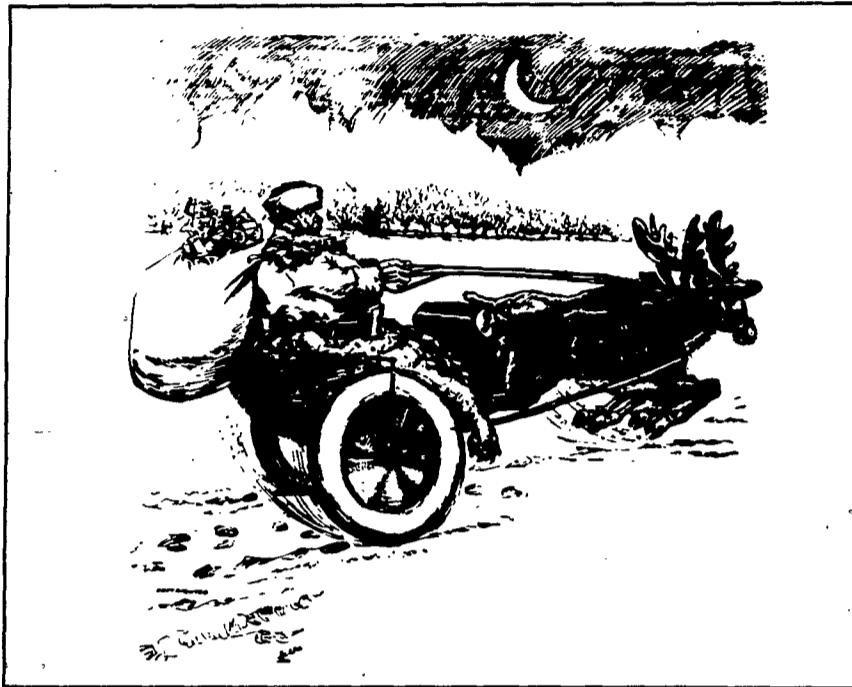
The author then tells her readers about the various traditions connected with Lent and

the Resurrection — from Mardi Gras to the solemnity of Ash Wednesday, from the German Lenten favorite of pretzels to the old French custom of paper "nuns" with seven feet marking the seven weeks of Lent.

Quickly, then, our "space-and-time-ship" takes off again, carrying us through Easter Sunday, Pentecost and the feast of St. John the Baptist. Soon it is autumn. Delightfully, we approach Halloween and Thanksgiving, learning about All Saints' and All Souls' days as well as the Pilgrims pursuit of religious freedom and their gratefulness to God.

The time and space revolution ends some 120 pages from its speedy start. *In only a few days, the season of Advent will begin once again. Now is the time to give thanks in advance, that each of us will open our hearts and receive the Christ Child we love, as once again we enter into and follow another of God's years,* Mala Powers concludes. As an appendix to the journey, she includes suggestions for family celebrations of the various Christian holidays, a monthly calendar of religious feasts and a list of suggested readings.

"Follow the Year" is published by Harper & Row, New York. The four-color, hard-bound book is priced at \$14.95.



Frances Elizabeth Livens/Follow the Year

## The first Noel

The celebration of Christmas is said by the Church historians to have been formally instituted by Pope Telesphorus, who died A.D. 138.

Reprinted from the Catholic Journal  
December 12, 1896

## Mince pies

Christmas mince pies in the seventeenth and eighteenth centuries were made with a coffin-shaped crust, to represent the manger.

Reprinted from the Catholic Journal  
December 19, 1896

## Christmas Greens

The leaves proper to use in Christmas decorations are those of the holly, bay, mistletoe, laurel and rosemary.

Reprinted from the Catholic Journal  
December 12, 1896

# FUNERAL DIRECTORS

THOSE WHO WISH TO HAVE ARRANGEMENTS CARRIED OUT IN ACCORDANCE WITH THE IDEALS OF THEIR FAITH, CONTACT THE FUNERAL DIRECTORS LISTED BELOW FOR PRE-NEED OR AT-NEED SERVICES AND COUNSELING.

### ROCHESTER

**Ashton-Smith Funeral Home Inc.**  
(482-6260)  
**Mattle Funeral Home**  
(716) 482-2440  
853 Culver Rd.  
Malcolm M. Nulton James R. Gray

**Corbett Funeral Home, Inc.**  
**Roger G. Blakeslee**  
109 West Avenue  
Rochester, N.Y. 14611  
(716) 235-2000

**Polvino & Granata Funeral Home Inc.**  
Serving Rochester and Gates  
**Frank Granata**  
371 Lake Avenue  
Rochester, N.Y. 14608  
(716) 458-3341

**Schauman Funeral Home Inc.**  
**Edwin Sulewski**  
2100 St. Paul Street  
Rochester, N.Y. 14621  
(716) 342-3400

**Michael R. Yackiw Funeral Home**  
1270 Norton St.  
Rochester, N.Y. 14621  
(716) 544-5000  
If no answer 342-9300

**Younglove-Smith Funeral Home, Inc.**  
Serving Greece  
1511 Dewey Avenue  
Rochester, N.Y. 14615  
(716) 458-6200

### IRONDEQUOIT

**Burns-Hanna Funeral Home**  
1795 East Ridge Rd.  
Rochester, N.Y. 14622  
(716) 467-5745

**Edward H. Dreier Funeral Home Inc.**  
**Edward H. Dreier**  
**Alan E. Giltner**  
1717 Portland Avenue  
Rochester, N.Y. 14617  
(716) 342-8500

**Paul W. Harris Funeral Home Inc.**  
**Richard P. Harris**  
**Charles E. Davis**  
570 Kings Highway S.  
(corner Titus)  
Rochester, N.Y. 14621  
(716) 544-2041

**May Funeral Home**  
**George L. May Jr.**  
**Raymond L. Welch**  
2793 Culver Rd.  
Rochester, N.Y. 14622  
(716) 467-7957

**Schauman Funeral Home Inc.**  
**Edwin Sulewski**  
2100 St. Paul Street  
Rochester, N.Y. 14621  
(716) 342-3400

**Alvah Halloran and Son, Inc. Funeral Home**  
**H. Daniel Halloran**  
2125 Chili Avenue  
Rochester, N.Y. 14624  
(716) 247-7590

### GATES

### CHILI

**Leo M. Bean Funeral Home, Inc.**  
2771 Chili Ave.  
Rochester, N.Y. 14624  
(716) 235-4134  
We invite Comparison

### GREECE

**Arndt Funeral Home**  
1118 Long Pond Rd.  
(near Maiden Lane)  
Greece, N.Y. 14626  
**Ronald John Arndt**  
Parking for over 100 cars  
(716) 225-6350

**Vay, Schleich and Meeson Funeral Home Inc.**  
"Greece's Largest and Most Complete Facilities"  
2692 Dewey Avenue  
Greece, N.Y. 14616  
(716) 663-5827

### HENRIETTA

**Henry D. Halloran Son Inc. Funeral Home**  
5781 W. Henrietta Rd.  
Henrietta, N.Y. 14586  
(716) 334-9350  
**Francis J. Martin Sr.**  
**Francis Joseph Martin Jr.**

### MACEDON

**Payne-Nulton Funeral Home Inc.**  
22 Rickford St.  
Macedon, N.Y. 14502  
(315) 986-7781  
**Malcolm M. Nulton**  
**James R. Gray**

### PENFIELD

**Nulton Funeral Home**  
1704 Penfield Road  
Penfield, N.Y. 14526  
**Malcolm M. Nulton**  
**James R. Gray**