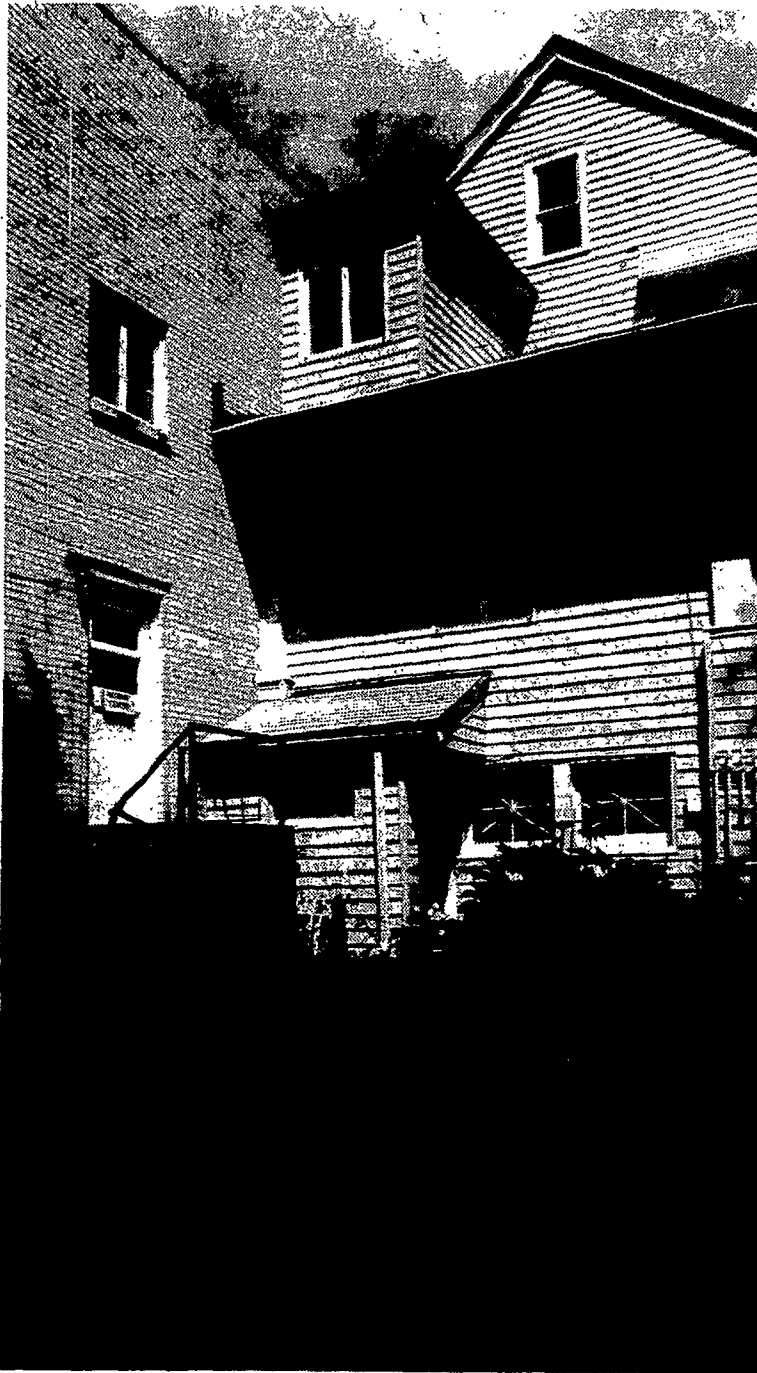




This peaceful entranceway to the monastery grounds greets retreat participants as they turn off West Church Street in Elmira. Jeff Goulding/Courier-Journal



Sister Miriam, prioress, and Sister Catherine, director of the retreat center, pose in the center's soft lighting.



At the entrance to the retreat center, a well-tended flower garden welcomes and bids farewell to retreat participants.



The retreat center consists of six bedrooms like this one, a kitchen, bathroom and meditation room which is open to the guests.

## Dominican Monastery Opens For Retreats

By Teresa A. Parsons

By nature and design, the Monastery of Mary the Queen is a place of prayer, penance, silence and solitude. Surrounded by pine trees on a hill west of Elmira, it seems a place far removed from the rest of the world, and for the most part, one that has remained off-limits to the public.

But as a service to women of the local Christian community, the Dominican nuns there have recently decided to share their peaceful haven and way of life by opening part of the monastery to individual, private, small and self-directed group retreats.

"People have requested a place to get away," explained Sister Miriam, the prioress of the monastery, and the nuns collectively have voted to respond to that need. Sister Miriam added that a recent Church document emphasized the need for enclosed contemplative communities to share their influence and daily prayer with those around them while "always respecting the requirements of enclosure."

Renovations were necessary to the part of the building set aside for retreats. Specifically, a full kitchen was added to the existing facilities — a sitting/reading room, bathroom and the six small private bedrooms the nuns call "cells."

Twelve nuns make up the Dominican community now living in the monastery, which was founded in 1944. In age, they range from about 37 to 80. Worldwide, there are 200 communities of cloistered Dominican nuns; 17 are in the United States. Founded in 1205 by St. Dominic in Prouille, France, the Dominican nuns observe vows of chastity, poverty and obedience.

To make reservations for a retreat, write one month in advance to Mary the Queen Retreat Center, 1310 W. Church St., Elmira, N.Y., 14905, including name, address, dates requested and reference (a priest or sister). An offering of \$15 per day is requested. The nuns ask that phone calls for information be made only between 8:30 and 11 a.m., 1 to 2 p.m., or 7:30 to 8:15 p.m.

### Cenacle Sets Lecture Series

The Cenacle Retreat House has scheduled a weekly Centennial Lecture series entitled "Prayer: Hunger of the Heart, Sigh of the Spirit," beginning September 19.

The Cenacle Centennial Lecture Series marks the centennial observance of the death of the foundress of the Religious of the Cenacle, Therese Couderc, by providing a setting for a subscription series of lectures on the experience of prayer. The lectures will touch on such topics as the stages of growth and development in prayer, human vulnerability, adaptability or transferability — how the experiences outlined speak to the contemporary person, and life witness.

The following schedule is set for the Cenacle Centennial Lecture Series at the Cenacle Retreat House, 693 East Avenue, Rochester:

- Sept. 19 "Thomas Merton" Presenter: Msgr. William Shannon
- Sept. 26 "Therese Couderc" Presenter: Sr. Ellen Frawley, RC, Sr. Anita Rourke, RC
- Oct. 3 "Ignatius of Loyola" Presenter: William O'Malley, SJ
- Oct. 10 "John of the Cross" Presenter:

- John Healy, O.Carm.
  - Oct. 17 "Theresa of Avila" Presenter: Mary Sullivan, RSM
  - Oct. 24 "Francis of Assisi" Presenter: Sebastian A. Falcone
- Limited subscriptions are available. A series of tickets is priced at \$15, single tickets are \$3. For information, contact Sr. Anita Rourke or Sr. Barbara Kingston at (716)271-8755.

### Banks Support Nazareth

The Rochester Clearing House Association has given Nazareth College \$3,055 in unrestricted funds which will support scholarships and general operating expenses according to Laurel Tarcinale, the college's director of development.

Banks which belong to the association are: Central Trust Company, Chase Lincoln First Bank, N.A.-Rochester Division, Chemical Bank-Rochester Region, Citibank (New York State) N.A., Key Bank-Rochester Region, Manufacturers Hanover, N.A.-Rochester Region, Marine Midland Bank, N.A.-Rochester Region, Monroe Savings Bank, Rochester Community Savings Bank, and Security Norstar Bank.

### LOANS ARRANGED

Debt consolidation, business expansion, mortgages, venture capital, aircraft and marine financing, farm & agricultural, trucking, theatrical productions-state-screen-TV-video, educational, inventions, franchises, mining, oil drilling, casino and entertainment palaces, hotels, motels, ranches, or for any sound purpose. (arbitrage lending and barter trading also available). Write in confidence complete details of your needs, or if in a hurry call: (203)-848-8552, BATES BUSINESS CONSULTANTS, 123 Maple Ave., PO. Box 233, Mentville, Conn. 06353, U.S.A., Telex cable address "BATFIN" WE ARE THE ONLY MONEY SERVICE IN THE WORLD (THAT WE KNOW OF) THAT SERVICES BORROWERS 24 HRS. PER DAY (8 PM-9 AM recorded service) 365 DAYS PER YEAR. If you wish to become an Associate Loan Arranger, write or call c/o Dr. Louis Bates Sorrentino for details.