

**AT YOUR PARISH**

**St. Margaret Mary**

A program on planning wedding music for couples intending to wed at St. Margaret Mary Church will be 3 p.m., Saturday, Jan. 28 in the church choir loft. The session will include suggestions and excerpts of possible wedding music. All couples planning weddings at the church in the next few months "should attend this meeting," a parish release stated. Further information is available from Jean Woehrlen, 342-2100.

**Immaculate**

**Ithaca** — Father Anthony Mugavero will celebrate Mass for the Charismatic commu-

nity, 7:30 p.m., Jan. 26 at Immaculate Conception Church here. The public is invited.

**St. Andrew**

Word was received last week of a Christmas party, shared by first graders at St. Andrew's School, and first graders at School 36. The party was sponsored by the Portland Avenue Business Association. According to Skip Weekes, president of the association, participating companies donated both goods and services for the event.

**St. Boniface**

The second annual Round and Square Dance sponsored

by the St. Boniface School Mothers' Club will be 7:30-10:30 p.m., Saturday, Feb. 11 in the school, according to Mrs. Lillian Dugan, chairperson. Callers for the square dancing will be Mr. and Mrs. Myron Huss. Refreshments will be available. Fee is \$5 per family, \$3 per couple and \$2 single.

**St. Michael**

**Newark** — A teen retreat titled "Anawim" is slated Feb. 3-5 through St. Michael's Church. The event, which means "the lowly of Yahweh, the faithful remnant," is open to youths of all denominations.

**Immaculate**

Rev. Dwight Webster, acting director of the Black Church Studies Program at Colgate Rochester Divinity School/Bexley Hall/Crozer Theological Seminary will preach 11 a.m., Sunday, Jan. 29, at Immaculate Conception Church in Rochester. The event is the last in the church's celebration of Black History Month.

**St. Francis Assisi**

A holy hour, sponsored by the People's Eucharistic League, will be 7-8 p.m., Saturday, Jan. 28 at St. Francis of Assisi Church, the corner of Orange and Whitney streets. The public is invited.

**St. Ambrose**

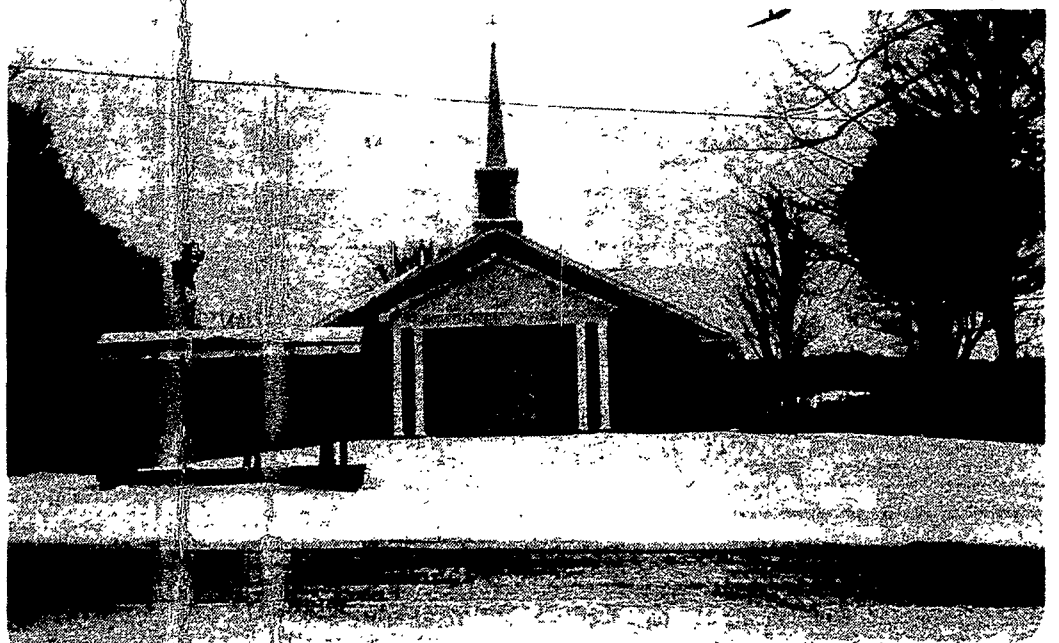
The Rosary Society of St. Ambrose Church will stage a dinner sponsored by Bell Supermarket, 6:30 p.m., Feb. 6 in Dailey Hall. Following the dinner will be a short business meeting and a demonstration on hair and skin care by Shear Ego. Tickets at \$3 are available prior to Jan. 30 through band leaders or Phyllis Guarrera, 288-0738; Beverly Fedison, 482-0317. Families and friends are welcome at the event.

**Assumption**

**Fairport** — A winter festival will be celebrated by members of the Church of the Assumption of Our Lady, 2-9 p.m., Sunday, Jan. 29, Hopkins Point Lodge, Mendon Ponds Park. Activities include sledding, skating, cross country, hiking, jogging. Participants are asked to bring hot foods. Beverages, utensils and paper products will be provided. Further information is available from the Grassos, 223-5211; or Hossenloppsm, 223-5029.

**St. Charles**

A Holy Hour for peace will be 7:30-8:30 p.m., Friday, Feb. 3 at St. Charles Borromeo Church. During the service there will be recitation of the rosary and distribution of Communion. According to spokesperson Josephine Coy, the public is invited. "Please come and bring a friend," she said.



The new St. Mary's Church in Rexville. Photo courtesy of Hornell Evening Tribune.

**Bishop to Dedicate New Rexville Church**

**Rexville** — Bishop Matthew H. Clark will be the main celebrant at a Mass of dedication for the new St. Mary's Church 11 a.m., Sunday, Feb. 19.

The new edifice replaces the structure that was destroyed by fire after it was hit

by lightning June 9, 1981.

St. Mary's Parish is 132 years old. A history penned by its current pastor, Father Thomas Burr, and published in 1978, two years after he took his post, indicates fire struck the parish perhaps three times to that date.

Twice St. Mary's Church is reported to have burned, both times in the 1800s. A third fire, in 1943, downed the parish hall (a former school building) in 45 minutes.

On the earlier fires, some confusion exists between available histories on a possible fire in either 1868 or '69.

However, following a fire in 1877, "The people immediately began with willing hands the construction of another church. Materials had to be brought from Wellsville, and parishioners responded with 225 teams of horses to haul the necessary

supplies. "Within months it was completed and on Sept. 14, 1877 was dedicated by Bishop Ryan. This church cost \$9,000 and is 100 feet long by 47 feet wide. The spire is 135 feet high and contains a 2,000 pound bell," Father Burr's history relates.

It is that church which was destroyed in 1981 and which has been replaced with a structure to be dedicated next month.



GRASHOF

**CURE Names Hans Grashof New President**

Hans Grashof, a research chemist with Eastman Kodak Co., has been elected president of CURE Childhood Cancer Association of Rochester.

A Rochester native, Grashof, his wife, Maureen and two daughter, Nicole and Devon, live in Chili.

The association was founded in 1976 by a group of parents whose children had died from cancer or whose children were undergoing treatment for the disease, and by medical personnel at the University of Rochester Medical Center.

The group's work benefits children in the Pediatric Hematology-Oncology Unit at Strong Memorial Hospital, and their families.

There are now more than 200 children in treatment at the facility for various forms of cancer.

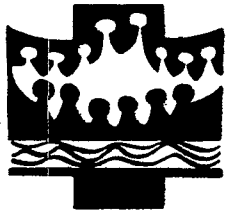
**Deadline**

Deadline for news in the Courier-Journal is noon on Thursday, preceding Wednesday publication. The Courier-Journal address is 114 S. Union St., Rochester, N.Y. 14607.

**Hicks**  
Home Heating Inc.  
HEATING-COOLING  
424-4848 271-4650

Have you discovered Watson Homestead  
Beautiful Christian conference center serving adults, youth, and families welcomes all church and non-profit groups. Accommodates 25 to 280 in year-round, well-appointed facilities.  
Chapel and heated indoor pool. Near Corning Glass Works and all Finger Lakes attractions. Special summer rates for week-long programs. Write: Watson Homestead, R.S. Box 168, Dry Run Road, Painted Post, New York 14870. (607) 562-0541.

Insights In Liturgy



By Jim Lund

**Lent: Preparation for Peacemaking**

Lent is a "time apart," a time of renewal, of penance, of conversion. But, for what are we to be penitent? And to what are we to be renewed and converted? As we prepare for this liturgical season, we would be well-served by giving these questions some thought.

There are many sources to which one can refer in answering these questions and here I am going to look to the very timely and important United States bishops' pastoral letter, "The Challenge of Peace: God's Promise and Our Response." In this teaching, the bishops refer often to the need for conversion and to John Paul II's call for a "moral about-face."

Like the prophets, their summons to conversion is issued in a very specific historical context. That context is marked by troubling realities. A central theme of the pastoral letter is that one such reality is the threat that nuclear war poses to God's people and creation. A second reality is, the bishops conclude, that "convinced Christians" are in a minority even in nominally Christian countries. What this implies is that there are many who are Christian in name only and that to be a "nominal" Christian alone is not sufficient.

Thus we must frankly face the question whether we are "convinced" or "nominal" Christians, for the renewal of Christian life requires first that we confront our own failure to be faithful witnesses to Jesus Christ, and second that we change our lives to conform to the

demands implicit in such fidelity. Whether we are open to these requirements will in itself assist us in answering this question.

The nominal Christian will not be willing to accept the pastoral letter's teaching that obedience to Jesus' call "means separating ourselves from all attachments and affiliations that could prevent us from hearing and following our authentic vocation." Material possessions, political ideology and nationalism are among the attachments which tempt us to conform the Gospel to our lives, instead of allowing ourselves to be conformed to the Gospel.

The convinced Christian is not so encumbered. Even though she or he must encounter the same temptations, the person of faith is open to the transforming power of the Gospel that leads one on the path of discipleship, a path which leads to acceptance of Christ's call to be peacemakers.

Reminded by the "Challenge of Peace" that being a disciple of Jesus means becoming a "doer of the word," the season of Lent can be the time when we face in prayer, penance and action our failure to live our faith. It is the time in which we can repent for the occasions that we subordinate the Gospel to other attachments. But most important, it is the time that we can be renewed and converted. In our historical context, this urgently requires that we become peacemakers.

**AMERICAN CATHOLIC BROADCAST SCHEDULE**

		1/25	1/26	1/27		1/30	2/2
American Cable of Rochester	#5		10 AM	2 PM	The Bible: The New Testament. Father Powell describes the New Testament as a special interaction between an individual and God.	10 AM	
Peoples Cable	#19	8 PM				8 PM	
American Cable of Webster	#5					8 PM	
Channel 12 West	#12	8 PM	8 PM				8 PM

**THOUGHTS TO CONSIDER**



**EDWIN SULEWSKI FUNERAL DIRECTOR**

**What is grief?**

Grief is a process of feelings and behaviors which follow the loss of someone or something that we love. The entire process of grieving helps us to come to terms with the changes that have taken place in our lives and begin adjustment to them. This is not always easy and often lasts for a year or more. Some of the feelings that accompany grief are anger, guilt, anxiety, shock, jealousy and depression. It is not uncommon to be confused, restless, to have difficulty sleeping or to have a change in appetite. It takes time to accept the reality that someone we love is deceased. It takes longer to recreate a life that can make us happy.

**SCHAUMAN FUNERAL HOME**  
2100 St. Paul St. 342-3400