

# Program Goals: Preparing Couples For a Lifetime Relationship

Dear Special Lovers,

Congratulations! Couples planning to be married are so full of joy and hope — that's why we are calling you special lovers. We, too, are pleased about your upcoming marriage, and we share in your excitement and your hope. We are delighted you are choosing to be married in the Church, as we know that symbolizes a caring for each other and a commitment to each other and to God that is very special. We believe in Christian Marriage as a way of life, and we want the best for you and your future.

To help you in planning for your future, we urge you to take some time very soon to attend a Marriage Preparation Program. On the Pre-Cana schedule, appearing in this issue of the Courier-Journal and also obtainable from your parish, you will notice the dates and places of the sessions we have scheduled. There are one-day sessions included especially for those couples with different working times, or where one of the couple is out of town. Engaged Couple Encounter dates are listed, too. This group has an excellent program which you may want to consider.

Also notice the special program — New Horizons — for those persons who have been previously married and have gone through the Church annulment process, as

well as those persons entering a second marriage as the result of the death of a spouse.

We recommend that you register for one of these sessions as soon as possible — participation six to eight months before your wedding date is ideal.

Marriage is a lifelong experience of challenges to grow as individuals, and as a couple. We who are involved in the ministry to engaged couples care about you and your marriage and we are anxious to share with you. We see marriage preparation as the opportunity for the two of you to get away from the

hectic details of planning your wedding day, and to spend time together with other engaged and married couples and a priest to do in-depth thinking about marriage as a vocation. After all, your wedding is a day — your marriage is a lifetime.

Again, congratulations. Our prayer is that God will bless you as you prepare to celebrate your marriage and that His love will continue to shine upon you as you grow through your years together.

Peace, Love and Joy  
Jim and Donna Fitch  
Pre-Marriage  
Coordinators

## What is a Family?

A family is a very special gift from God, made up of the love of a mother, the wisdom of a father, and the innocence of a child.

It is an endless source of laughter, tears, smiles, and sighs — very special memories.

A family is there to cheer us when we're blue, to reassure us when we are troubled, to tease us, to spoil us . . . and to pray for us.

A family is a guiding light — a light of God's love and a lamp of His understanding.

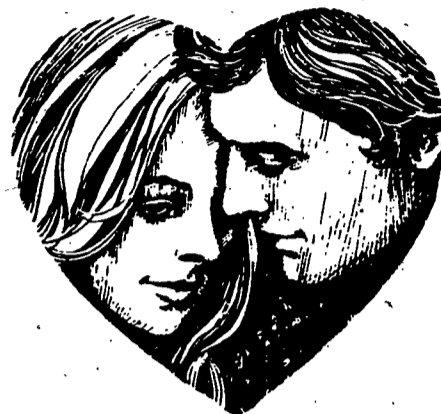
A family is a feeling — a warm, special feeling that stays with us wherever we may be, and reminds us of those loved ones who share the spirit of belonging.

# Mapledale PARTY HOUSE

The Perfect Party Place

HAVE YOUR NAME IN LIGHTS

We treat your wedding like it's our only wedding . . .



### Ten Important Extras at NO Added Charge

	MAPLEDALE	OTHER	OTHER
1. An experienced manager and master of ceremonies to supervise that most important day of your lives.	Yes		
2. Assistance in obtaining bands, cake, photographer & invitations.	Yes		
3. Public Address system in each room so that special moments can be heard by guests, i.e. toast, prayer, bridal dance.	Yes		
4. Wedding cake served on china plates. More coffee served after your meal, with the cake.	Yes		
5. All gifts, etc. are packed and on carts, ready for your parents to take home.	Yes		
6. Plenty of free, supervised parking.	Yes		
7. Choice of red, gold or white tablecloths and napkins.	Yes		
8. A bud vase with a red rose on each table.	Yes		
9. Elevated head table & band stands, except in VIP Room.	Yes		
10. "YOUR NAME IN LIGHTS"	Yes		

Buffet Menu starting at . . . . . \$5.50  
Banquet Menu . . . . . 6.75  
Bar Menu . . . . . A wide variety to choose from

BOOK YOUR RECEPTION NOW AND WE WILL GIVE YOU A GUARANTEED PRICE 6 MONTHS BEFORE YOUR RECEPTION.

1020 Maple Street 436-2112 Rochester, NY

Priced from  
**\$49,000.00**

Rent with  
option to  
purchase

You are invited to visit our beautiful townhouse condominium community nestled in over twenty acres of rolling hills and lovely landscaped grounds.

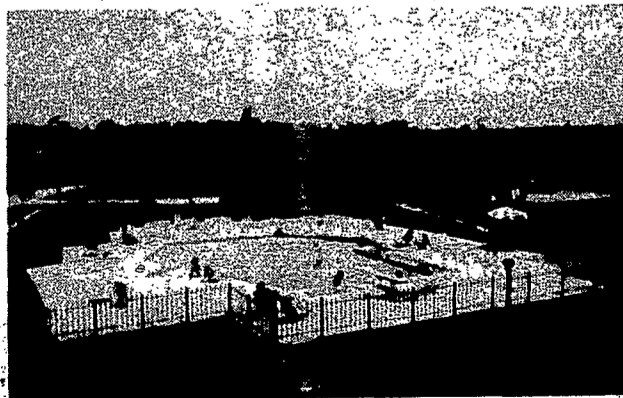
Recreational and social facilities include two private tennis courts, beautiful inground pool and an attractive clubhouse with cathedral ceilings, brick fireplace, full kitchen and saunas.

The townhouses offer three levels of living space, including a finished recreation room. Various options such as fireplaces and wall-to-wall carpeting are available to allow you to personalize your decor.

# SURREY HILL



## TOWNEHOUSE CONDOMINIUMS



MODEL BEAUTIFULLY  
DECORATED BY:  
ROTH BROTHERS  
ETHAN ALLEN  
GALLERY

Models open 7 days a week —  
12-5 pm or by appointment.

**12 1/2 % \***  
FINANCING

LIMITED AMOUNT AVAILABLE  
WITH 10% DOWN.

We look forward to showing you our beautifully decorated model units and discussing how you can become a part of the Surrey Hill Community.

Sponsor:  
Scarborough Development  
Corp.

\*3 yr., 5 yr., or 30 yr. AML

This is not an offering which can only be made by prospectus CD80-128.

1700 JEFFERSON RD.  
PITTSFORD (716) 442-7220