

# Newark Builds Unique Trike

By Terrance J. Brennan

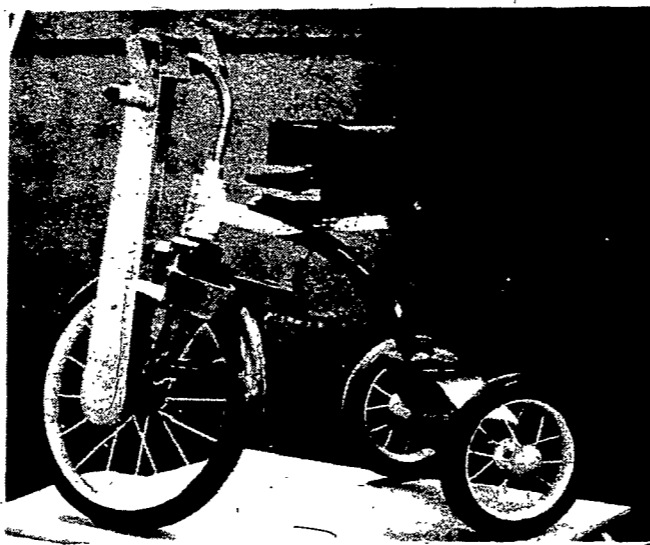
Newark — A team of design engineers at the Newark Developmental Center has recently helped a two-year-old area boy with Spina Bifida to enjoy active play with neighborhood children.

The center's Adaptive Equipment Department, headed by Everal Youngs, William Peck and Walter Piech, assisted in the construction of a hand-propelled trike for the child, who is paralyzed in both legs.

Youngs explained, however, that credit for the design of the trike cannot go to the center.

"The child's mother approached us with the design of a trike (for disabled) constructed by the Reynolds Tobacco Co. in Winston-Salem, N.C."

Since the construction of



The trike modified by design engineers at Newark Developmental Center and machinists at Lyons Dry Dock.

such a device, according to Youngs, "was mechanically beyond our limited resources," the center contacted various metal shops in the area. The Lyons Dry Dock facilities agreed to produce the required parts.

Dry Dock supervisor David Conroy and machinist Charles Sampson spent approximately 16 man-hours remodeling the store-bought trike into its present state.

"The trike has a lower gear ratio that makes it easier for the child to use," explained Youngs. "We also had to

make several adjustments for the child's size."

Youngs speculated that the price of the trike would have been extremely prohibitive ("maybe \$700-\$800") to order from a shop to build from scratch.

But the end result of a great amount of effort by these area men has yielded something that one just can't buy off a store shelf.

The best part, said Youngs, "was that the child was able to use it the very first time he tried."

# Colleges Initiate Program For Teaching Special Ed

Nazareth College and Alfred University have announced they will initiate a cooperative teacher preparation program in special education next year. The announcement was made on Friday, Nov. 6, by Robert A. Kidera, president of Nazareth, and Dr. S. Gene Odle, acting president of Alfred.

Under the terms of the program, Alfred will begin sending students from its regular elementary certification program during the summer of 1982 to Nazareth to begin a special sequence of courses and student teaching experience. The sequence will enable Alfred students to qualify for certification as special education teachers with particular expertise in educating the learning disabled.

Upon successful completion of the program, students will be recommended by Nazareth for certification in the special education area, and recommended by Alfred for regular elementary teacher certification.

"Alfred is pleased with this program which increases the educational opportunities for students by sharing resources with Nazareth," said Dr. Odle. "We see it as another example of the mutually beneficial cooperation among colleges in the Rochester area."

"It is imperative," Kidera said, "that colleges increasingly share resources to provide more educational opportunities for students at

elementary education program, Alfred University.

Nazareth College's program in special education is the largest in the area. More than 80 students take undergraduate courses and nearly 180 are enrolled in the graduate learning disabilities program this year.

This marks the second such program initiated by Nazareth College in the last year. This past summer, eight students from SUNY Brockport began studies in the special education program.



Focus on Disabled

the lowest possible cost."

Coordinators of the new program will be Dr. Thomas Walsh, director of the learning disabilities program, Nazareth College, and Dr. Katherine Wiesendanger, director of the



## MR. MIKE'S RESTAURANT

Complete Luncheon and Dinner Menu  
Monday through Saturday  
Live Entertainment Tuesday through Saturday  
1485 Mt. Read Blvd., Rochester, NY 14608  
458-0420

# Rosetto

PRECOOKED

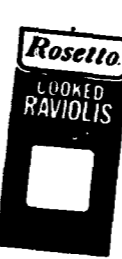
## FROZEN CHEESE RAVIOLI

MAKES A LOW COST LUNCH OR DINNER

Takes only minutes to make a delicious, fresher-tasting dinner. Costs you less because it comes precooked without sauce. Use the coupon. Save even more.



## ROSETTO COUPON 25¢ OFF



the purchase price of a 30 oz. bag of frozen ROSETTO 50 PRECOOKED CHEESE RAVIOLI Without Sauce  
**SAVE MONEY. BUY A PACKAGE TODAY**  
DEALER: Rosetto Foods will redeem this coupon at 10 White Street, Rochester, N.Y. 14608 for 25¢ plus 7¢ handling, provided coupon is taken in exchange for a package of frozen Rosetto pre-cooked Cheese Ravioli, in accordance with terms of our agreement. Cash value 1/20th of a cent. This coupon void where taxed, prohibited or restricted by law.  
Expires December 31, 1981

# Archbishop Tawil Slated For Arab-Christian Confab

Archbishop Joseph Tawil, Eparch of the Melkite Catholics of the U.S., has been billed as principal speaker for a conference, "Contemporary Christians of the Middle East," 1:45 p.m. Sunday, Dec. 6, at St. John Fisher College.

The archbishop will address "The Situation of Christians of the Middle East Today" at the opening of the actual conference, 3 p.m. Preceding the talk he will celebrate Mass

according to his rite in Murphy Hall, 75 South Fairport Road, on the Fisher campus.

Other speakers include Father Marcos A. Marcos, pastor of St. Mark's Coptic Orthodox Church, Toronto; Rev. Jeffrey Kirk, St. Paul's Episcopal Church, Rochester; Atoun Ateya, of the Egyptian Coptic community in Rochester; Vahe Zeitounzian, Armenian community of

Rochester; Medhi Abhari, Presbyterian Iranian community of Rochester.

A dinner will be served at 6:30 p.m. Registration fee for both the conference and dinner is \$15. Lecture fee only is \$5. Interested persons are asked to register by today, Dec. 2, 586-4140.



## Christmas Tea

The Business Women's Group of the Catholic Women's Club has scheduled its annual Christmas Tea for the benefit of the Carmelite Sisters from 2 to 4 p.m. on Sunday, Dec. 13, at the A.A.U.W. Clubhouse, 494 East Ave. Planning the event, from left, Catherine Ferris, Laurette Wandersee, Anna Marie Rauber and Rita Kramer.

## Health Benefits Workshop

Monroe Community Hospital will host a workshop on Medicare/Blue Cross/Blue Shield coverage titled "Why Did You Cut Off My Benefits? I'm Still Sick" at 7:30 p.m. on Monday, Dec. 7, in the second floor conference room.

The workshop is aimed at helping people understand their health insurance benefits and a panel of speakers will include representatives from the Social Security Ad-

ministration and Blue Cross/Blue Shield, as well as members of a hospital utilization review committee and social service worker. Also speaking will be two family members who have experienced health insurance cutoffs.

The workshop is open to the public. Anyone needing more information should call Ms. Marge Handel at 473-4080, ext. 400.

## Save \$1000 a person on first class tours to ITALY

Book a money-saving Perillo tour now. Perillo is the largest first class Italy operator in the world and Pan Am's largest customer. This incredible buying-power saves \$2000 a couple.

Select from 3 great escorted tours. All first class, all 15 days, all \$1499. All depart weekly Apr. thru Oct.

Visit Rome, Venice, Stresa, Florence, Sorrento, Taormina, Palermo and lots more.

Includes air fare plus every item of expense except lunch.

Price guaranteed if paid in full before April 20, 1982

**ACT NOW!** These tours sell out in record time. Request brochure

## WYDLER TRAVEL

1778 Empire Blvd. Webster, NY 14580 Phone: 671-2640

THIS AD WORTH \$10 OFF AT  
**SAN JUAN HAIR SALON (de Belleza)**  
SHAMPOO & SET \$5.00 UP  
SHAMPOO/STYLE CUT BLOW DRY \$6.00 UP  
PLAYERO-TCB-ZOTO  
1648 ST. PAUL & NORTON  
338-3256

# Geysens'

NURSERY & LANDSCAPING INC.  
3446 Mt. READ BLVD. • 865-7813

VISIT OUR

## YULE TREE SHOP and GREENHOUSE

LIVING TREES TO PLANT OUT LATER  
CUT TREES SELECT FIR, PINE, and SPRUCE

WREATHES 4.25 and up

POINSETTIAS .98 and up

CHRISTMAS CATCUS

ROPING and BOUGHS

LIGHTS, DECORATIONS, and

ORNAMENTS

GIFT CERTIFICATES and

GIFTS FOR THE GARDNER



CHURCH DISCOUNTS

## OPEN HOUSE SUNDAY, DECEMBER 6 2-5 P.M.

BIRD FOOD

FIREWOOD

FEEDERS

A St. Pal

Palr will be at the sponsor Parish a.m. 1 Saturd feature plants, elephar sandwi

Ho

Tod: deadlin the Cl by the Family Wedne Pine R made l Sherry Walter Robert

Go

The Societ: Couns annua p.m., Ticket per p calling 3032, 235-10

St.

The Bazaaw Lawre a.m.-7 5, and Dec. clude novel bak e eleph

St.

Th Philij Chris p.m., schoo perso Grac at 34 482-2

St.

Cl Chris John at 9 in t dinn park baza and

OI

A carol read: musi the ( Chur 3:30 The cong

Se

C

d