

# Nazareth Notes 110 Years of Education

This September, Nazareth Academy starts its 110th year of educating young women of Rochester. As the school has continued to change through the decades, so it is with this coming school year.

There are eight new people on the faculty: Mrs. Shirley Townsend and Mrs. Rose Umiker are new to the business department; William Andia will be the drama director; Mrs. Linda Kantor, home economics; Sister Mary Elizabeth Brewer, librarian; Mrs. Janice Barney, mathematics; Mrs. Ellen Hansen, science; and Sister Mary Sayles, cafeteria manager.

In addition, several new courses have been added to the curriculum. In response

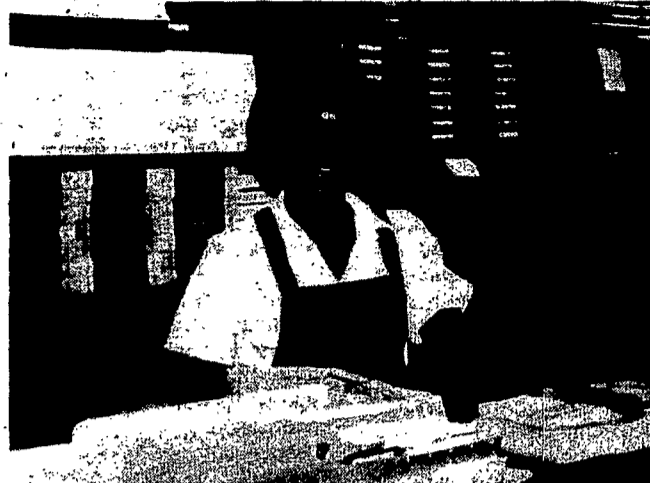
to requests from Nazareth alumnae who have gone on to colleges for engineering, the school will offer a one-semester course in mechanical drawing. A new computer for math and science will give the students an added opportunity for course work in computer programming. A course entitled "Integrated Business Data Processing" will be piloted for the State Education Department this fall. A computer word processor will be added to the business machines in order to fulfill requirements for the course.

For the first time, the home economics department will not offer a major sequence. Instead, students may choose from eight semester courses a variety of

topics in the subject.

The art department will offer new courses in weaving and printmaking. These courses will eventually lead to a new fine arts major slated to be completed by 1982-83. The music and art departments have worked together to form the fine arts major which will combine music theory, history and performance with art history and production.

A new retreat program will start in September using a team approach of various personnel from Nazareth and other high schools. Based on the Teen Seminar approach, students will take school time for prayer and reflection at locations other than the school setting.



Junior Emira Woods reads textbooks for distribution at Nazareth Academy.



## Early Education

Father John Hedges, center, pastor of St. Helen's Parish, greets pre-school children at the front door of the school prior to registration for the start of classes this fall. The Pre-School Cope program at St. Helen's focuses on the child's developmental learning stages, enriching the basic learning of the child's early years. From left, James and Donna Matt and their daughters, Jennifer and Heather; Bonnie Wurtz and her son Jimmy; Father Hedges; Anne Quarterley holding daughter Erin, son Timmy; Mrs. Agnes Laurer, school principal; and Mrs. Denise Heroux, pre-school teacher.

**Stanley H. Kaplan ...**  
Our 42 Years of Experience  
is Your Best Teacher

PREPARE FOR

MCAT • DAT  
LSAT • GMAT  
GRE • GRE PSYCH  
GRE BIO • SAT  
CPA • VAT • OCAT  
MAT • PCAT • TOEFL  
MSKP • NMB  
NDB • NPB • NLE  
ECFMG • FLEX  
VQE  
ACT

**Stanley H. Kaplan**  
EDUCATIONAL  
CENTER LTD  
TEST PREPARATION  
SPECIALISTS SINCE 1939  
Visit Any Center  
And See For Yourself  
Why We Make The Difference  
Call Days, Even & Weekends

SAT  
Aug. 19, Sept. 26  
LSAT: Sept. 5  
GMAT: Sept. 13  
GRE: Oct. 1  
1351 Mt. Hope Ave.  
(U of R area)  
(716) 275-9320

**TRY TRANSIT!**  
**New Fall**  
**Timetables**  
**effective**  
**September 7th**

**RTS Call**  
**288-1700**  
REGIONAL TRANSIT SERVICE

**RECYCLE ALUMINUM CANS FOR Cash!**

**EARN 24¢ PER POUND**  
**1¢ PER CAN**

**ROCHESTER COCA-COLA BOTTLING CORPORATION**  
**ALUMINUM CAN RECYCLING CENTERS:**


- St. Bridgets Drive, Between N. Clinton and St. Paul St.  
Open Monday and Thursday 3-7 PM, Saturday 8-Noon
- 110 Anderson Avenue, Between N. Goodman and Atlantic Ave.  
Open Monday thru Friday 7 AM to 3 PM

610 East Main St., Batavia, N.Y. Open  
570 North Main St., Canandaigua, N.Y. 9 a.m. to noon  
850 North Main St., Dansville, N.Y. Mon., Thurs., Sat.

**\$\$ FUND-RAISING PROJECT FOR ALL \$\$**  
ATTENTION Principals, Administrators,  
Student Councils, Band Leaders, Athletic Directors.  
Earn \$480.00 Per Ton  
24¢ per lb.

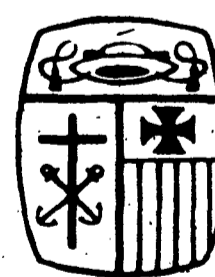
"All-Aluminum Cans" Can Be Identified by the words "All-Aluminum" or "Recyclable Aluminum" on the can. A magnet will NOT stick to the side of the can. Any "All-Aluminum" cans are accepted.

**BE A PART OF THE LITTER SOLUTION—RECYCLE!**

 Rochester Coca-Cola Bottling Corporation  
**A.L. Anderson and Sons**  
(716) 546-3900

**CARDINAL MOONEY HIGH SCHOOL**

A CO-EDUCATIONAL  
SECONDARY SCHOOL  
OFFERING COLLEGE PREPARATORY, BUSINESS,  
AND GENERAL COURSES.



Conducted By  
**HOLY CROSS BROTHERS**  
and  
**SISTERS OF MERCY**  
800 Maiden Lane, Rochester, NY  
865-1000

Open House: Thursday, November 5 — 7-9 p.m.  
Entrance Exam: Saturday, January 9

COURIER-JOURNAL  
N  
Elm  
Notre  
will w  
grade  
perch  
teach  
cha p  
enroll  
stude  
an im  
Th  
Fath  
Donc  
chapl  
and  
being  
sacra  
scho  
been  
Jesu  
Roch  
expe  
high  
Bo  
Bona  
Dam  
scho  
facul  
their  
Olis  
McI  
Ama  
new  
will  
theo  
C  
N  
T  
hav  
Car  
Sch  
Bac  
narr  
dire  
dire  
grac  
Joh  
narr  
post  
dire  
visi  
mer  
RSI  
of v  
T  
an  
Fra  
of t  
F  
Ba  
ma  
S  
bes  
pri  
Me  
196  
her  
Ca  
Br  
the  
M  
O  
N  
S  
Mc  
nar  
/ Cla  
Ste  
Six  
Vi  
Th