



Bishop Clark blesses the assembly. Flanking him are Msgr. Maney and Father Zimmerman.

Parish Center Blessed

Ontario — Parishioners of St. Mary's of the Lake Church filled their new parish center recently as Bishop Matthew H. Clark made his first visit to the parish and dedicated the recently completed building.

The dedication ceremonies followed a concelebrated Mass at which Bishop Clark presided. Msgr. John Maney, pastor, Father Jack Zimmerman, associate pastor, and many of the priests who have been associated with the parish concelebrated with him.

Following the dedication, the bishop was feted at a reception.

The parish center is adjacent to the church on Walworth Road. Major construction was done by contractors under the direction of architect and parishioner Alfred L. Pardi. As part of the Stewardship program, parishioners themselves completed the interior.

The building consists of a main hall with moving

partitions for classrooms. There also are permanent classrooms, offices and a kitchen.

With the recent growth of the parish, a building committee, headed by Mrs. Jean Bell, was established in 1977. Money for the new facility was raised by the sale of other parish property, the establishment of a memorial fund raising, a Mardi Gras dance and a summer festival, which has become a permanent part of parish life, according to parish spokespersons Jerry and Lee Skerrett.

Msgr. Shannon Society Plans Annual Mass

Msgr. William Shannon will present a four-part seminar, "Post Vatican II Church: Where Are They Going?" beginning tomorrow, Oct. 2 from 7:30 to 9:30 p.m. in the Otto Shults Center Porthole Lounge.

The seminar, which will meet for four consecutive Thursdays, will cover the Sacraments, morality and prayer. Information and registration is available at the Nazareth College Alumni Office, 586-2525.

The Annual Nocturnal Adoration Society Mass has been slated for Tuesday, Oct. 14, at 6:30 p.m. in St. Andrew's Church on Portland Ave.

Mass will be followed by supper in the parish hall.

Father John Hempel, pastor, will celebrate the Mass and speak at the supper. Father Robert Gaudio,

associate, will preach. John B. Gorall is chairman of the event. Tickets are available from band leaders.

Deadline

The deadline for submitting news to the Courier-Journal is noon on Thursday preceding the following Wednesday's publication.

VENT DAMPERS SAVE MONEY... VENT DAMPERS SAVE ENERGY...



ameri-therm

THERMALLY ACTUATED VENT DAMPER

The VW saved millions of Americans millions of dollars on gasoline. Now the AMERI-THERM™ VENT DAMPER is going to solve a home heating problem that will save millions of Americans millions of dollars.

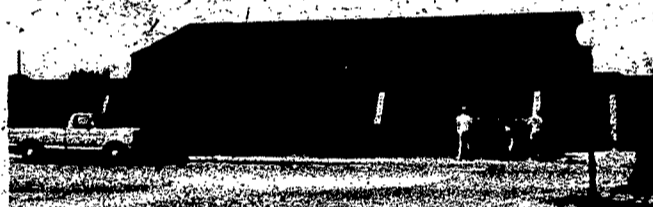
— FALL SPECIAL —

Furnace and Water Tank Prepared For Winter
And Vent Dampers Installed... **\$148.50**
(sizes up to 6", furnace parts extra)

JAMISON-SCHINDLER
Heating & Cooling a.n.

943 COPPER KETTLE ROAD
WEBSTER, NY 14580

TED OKOLOWICZ
(716) 671-3850



The new parish center at St. Mary's of the Lake.

VISIT OUR NEW **BROCKPORT STORE**

FABRICS & FINDINGS

"MONROE COUNTY'S EXCLUSIVE"

FABRIC WAREHOUSE

Carrying a Full Line of Dress and Decorator Fabrics—All Styles & Colors In Stock!

SINCE 1850

Palmer

Fish 'N' Seafood

CLAMBAKE SPECIALS

Fresh Clams Bag of 10 Dozen only **\$21.99**
Tender, sweet littleneck clams perfect for steaming, Clams Casino, and clams on the half-shell. We also carry a complete line of clam bake supplies. Offer good through Sat., Oct. 4, 1980.

Alaskan Snow Crab Legs only **\$2.49** lb.
Easy preparation... Just steam or boil. A delicious entrée or additional menu item for your clam bake. (Reg. \$2.99, save 50¢) Offer Good through Sat., Oct. 4, 1980.

PALMER FAMILY INFLATION FIGHTER
Hot, Deep-Fried, Fresh Deep Sea Whitefish only **\$1.99** lb. Reg. \$2.69, save 70¢
Offer good through Friday, October 3, 1980.

Five Palmer Locations to Better Serve You
GENESEE REGIONAL MARKET
900 Jefferson 424-3210

DOWNTOWN
141 State St. Opp. Andrews 546-6180

PERINTON HILLS MALL
Route 31 & 250 223-5800

WESTMAR PLAZA
2150 Buffalo Rd. Inside Bella Mkt. 247-3252

GOODMAN PLAZA
826 N. Goodman St. Inside Bella Mkt. 482-8048

Fall DECORATING Sale

BRAND NAME DECORATOR FABRICS FOR THE HOME! SALE SEPTEMBER 11 THRU OCTOBER 11

25% off Waverly
DRAPERIES
BEDSPREADS

Now is the time to select the draperies and bedspreads that will brighten your home. And there's no need to worry about ordinary draperies and bedspreads. They're made by the finest of materials. Weekly fabric that you've never selected in leading home furnishings stores. Choose from our special collections in contemporary style and size your own way.

Featuring: **Decorative Bedding**
Linen and Cotton
Linen and Cotton
Linen and Cotton
Linen and Cotton

COMPLETE LINE OF **Waverly**
DECORATOR FABRICS

1.20 YARD CUTS **25% OFF** LIST PRICE
30 YDS. & Over **30% OFF** LIST PRICE

Joanna WOVEN WOODS CUSTOM SHADES **25% OFF**

Kirsch WOVEN WOODS **25% OFF**

Craber WOVEN WOODS VERTICAL BLINDS **25% OFF**

LEVOLOR RIVIERA VERTICAL and HORIZONTAL BLINDS **25% OFF**

25% OFF on CUSTOM MADE DRAPERIES (PRICES IN STORE) Call us for Free Decorator Service

Window Art

CUSTOM DRAPERIES 25% OFF

Lower Drape the unfabric drapery

Because they are simple and versatile, our Lower Drape are clear and beautiful. They hang like curtains, but they're not curtains. They actually have your own color. They actually have your own style.

25% OFF

FOAM!

POLYURETHANE MATTRESSES
Medium Density

5" 11" 13" 15" 17" 19" 21" 23" 25" 27" 29" 31" 33" 35" 37" 39" 41" 43" 45" 47" 49" 51" 53" 55" 57" 59" 61" 63" 65" 67" 69" 71" 73" 75" 77" 79" 81" 83" 85" 87" 89" 91" 93" 95" 97" 99" 101" 103" 105" 107" 109" 111" 113" 115" 117" 119" 121" 123" 125" 127" 129" 131" 133" 135" 137" 139" 141" 143" 145" 147" 149" 151" 153" 155" 157" 159" 161" 163" 165" 167" 169" 171" 173" 175" 177" 179" 181" 183" 185" 187" 189" 191" 193" 195" 197" 199" 201" 203" 205" 207" 209" 211" 213" 215" 217" 219" 221" 223" 225" 227" 229" 231" 233" 235" 237" 239" 241" 243" 245" 247" 249" 251" 253" 255" 257" 259" 261" 263" 265" 267" 269" 271" 273" 275" 277" 279" 281" 283" 285" 287" 289" 291" 293" 295" 297" 299" 301" 303" 305" 307" 309" 311" 313" 315" 317" 319" 321" 323" 325" 327" 329" 331" 333" 335" 337" 339" 341" 343" 345" 347" 349" 351" 353" 355" 357" 359" 361" 363" 365" 367" 369" 371" 373" 375" 377" 379" 381" 383" 385" 387" 389" 391" 393" 395" 397" 399" 401" 403" 405" 407" 409" 411" 413" 415" 417" 419" 421" 423" 425" 427" 429" 431" 433" 435" 437" 439" 441" 443" 445" 447" 449" 451" 453" 455" 457" 459" 461" 463" 465" 467" 469" 471" 473" 475" 477" 479" 481" 483" 485" 487" 489" 491" 493" 495" 497" 499" 501" 503" 505" 507" 509" 511" 513" 515" 517" 519" 521" 523" 525" 527" 529" 531" 533" 535" 537" 539" 541" 543" 545" 547" 549" 551" 553" 555" 557" 559" 561" 563" 565" 567" 569" 571" 573" 575" 577" 579" 581" 583" 585" 587" 589" 591" 593" 595" 597" 599" 601" 603" 605" 607" 609" 611" 613" 615" 617" 619" 621" 623" 625" 627" 629" 631" 633" 635" 637" 639" 641" 643" 645" 647" 649" 651" 653" 655" 657" 659" 661" 663" 665" 667" 669" 671" 673" 675" 677" 679" 681" 683" 685" 687" 689" 691" 693" 695" 697" 699" 701" 703" 705" 707" 709" 711" 713" 715" 717" 719" 721" 723" 725" 727" 729" 731" 733" 735" 737" 739" 741" 743" 745" 747" 749" 751" 753" 755" 757" 759" 761" 763" 765" 767" 769" 771" 773" 775" 777" 779" 781" 783" 785" 787" 789" 791" 793" 795" 797" 799" 801" 803" 805" 807" 809" 811" 813" 815" 817" 819" 821" 823" 825" 827" 829" 831" 833" 835" 837" 839" 841" 843" 845" 847" 849" 851" 853" 855" 857" 859" 861" 863" 865" 867" 869" 871" 873" 875" 877" 879" 881" 883" 885" 887" 889" 891" 893" 895" 897" 899" 901" 903" 905" 907" 909" 911" 913" 915" 917" 919" 921" 923" 925" 927" 929" 931" 933" 935" 937" 939" 941" 943" 945" 947" 949" 951" 953" 955" 957" 959" 961" 963" 965" 967" 969" 971" 973" 975" 977" 979" 981" 983" 985" 987" 989" 991" 993" 995" 997" 999

DECORATOR SPECIALS

SHUMACHER DECORATIVE FABRICS

25% OFF OUR LOW EVERYDAY PRICES! (Restrictions Apply)

UPHOLSTERY SPECIALS

5" WIDE FABRIC \$3.77 yd. (Value \$11.99 yd.)

6" WIDE FABRIC \$5.97 yd. (Value \$16.99 yd.)

8" WIDE FABRIC \$7.77 yd. (Value \$23.99 yd.)

10" WIDE FABRIC \$9.77 yd. (Value \$29.99 yd.)

12" WIDE FABRIC \$11.77 yd. (Value \$35.99 yd.)

14" WIDE FABRIC \$13.77 yd. (Value \$41.99 yd.)

16" WIDE FABRIC \$15.77 yd. (Value \$47.99 yd.)

18" WIDE FABRIC \$17.77 yd. (Value \$53.99 yd.)

20" WIDE FABRIC \$19.77 yd. (Value \$59.99 yd.)

22" WIDE FABRIC \$21.77 yd. (Value \$65.99 yd.)

24" WIDE FABRIC \$23.77 yd. (Value \$71.99 yd.)

26" WIDE FABRIC \$25.77 yd. (Value \$77.99 yd.)

28" WIDE FABRIC \$27.77 yd. (Value \$83.99 yd.)

30" WIDE FABRIC \$29.77 yd. (Value \$89.99 yd.)

ROCHESTER
50 ANDERSON AVE.
461-2820

BROCKPORT
80 CLINTON ST.
637-9187

OPEN: Mon-Sat. 9-5:30; Tues. & Thurs. 'til 9

FABRICS & FINDINGS

"YOU'LL BE GLAD YOU FOUND US!"