

...rney — A Knock at the Door

PURPOSES OF THE HOME VISIT

presentations
leaders.
ing objectives
and trained
nization of a

The program is keyed to a personal visit by a trained volunteer. The visit itself is "Stewardship in Action": the volunteer is contributing his/her time and talent for service to the parish family. The volunteer is an apostle on a mission representing Christ as well as the parish.

Parishioners will be expecting the visits, having been informed through the pulpit and by mail and publicity. Purposes of the visit are three-fold:

- (1) To discuss the Stewardship concept — "a return to God of a portion of the gifts He gives us";
- (2) To inquire what the parish might do to help meet the needs of the parishioner;
- (3) To ascertain what the parishioner might be interested in doing to help the parish community.

THE STEWARDSHIP COMMITMENT CARD

and share

ed to illuminate the thinking,
of our people."

mall Rural Parish, Outside
rlish finally has been brought
mon cause, our own needs, not
for the parish as a whole."

ighbor ...

the Stewardship program is to
agree to return to God a portion
treasure, through the parish, for
r parish family needs your help...

elp the youth, the elderly? What
poor, the lonely, the ill and the
be done about the religious
about the decline in church at-
tivities? What can be done to
ity more effective?

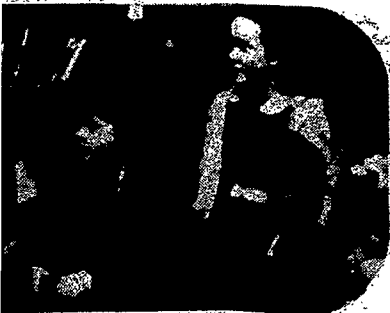
be faced not just by the clergy
the dedicated few — but by ALL



h committees



Visiting the elderly



ion of children

FAMILY NAME BROWN				Phone 2 3 4-5 6 7 8				STEWARDSHIP '79 YOUR PARISH NAME HERE			
House No. 1 2 3		Street/RFD No. MAINE ST.		Apt. No. 3		City ROCHESTER		Zip 1 4 6 0 0		Information taken by: <i>Jane Smith</i>	
List family members living in home. Give last name if different. Indicate relationship and age in boxes provided. If more in household, use back of card.						Put one code in each block if presently active in program or activity. Circle code if not.					
1	JOHN T.					301	513	701			
2	MARY L.					303	702	513			
3	TOM		16			604					
4	HELEN SMITH	1st	12mo			101	402				
5	BETH		8								
6											

SHARING -- PARISHIONER TO PARISH... I offer my Time and Talents to assist the parish in the following programs or activities...

Code	305 Musician.	509 Religious Ed. Teacher	701 Holy Name
201 Parish Council	307 Lector	510 Religious Ed. Helper	702 Rosary Society
202 Bldg & Grounds Comm.	309 Eucharistic Minister	513 Scripture Study	706 Senior Citizens Group
205 Education Comm.		514 Discussion Group	708 Newcomers Welcome
207 Finance Comm.	401 Visit Sick	515 Prayer Group	
208 Human Develop. Comm.	402 Spiritual Offering	517 Marriage Encounter	718 Festival
209 Liturgy Comm.	404 Work with Sr. Citizens	519 Pre-Cana Team	721 Coffee Hour
213 Stewardship Comm.	409 Emergency Child Care		
	410 Sunday Nursery Worker		
301 Usher		602 Scout Leader	801 General Repairs
302 Church Cleaning	501 Teacher Aide	603 Scout Leader Asst.	808 Office help
303 Choir	502 Tutor	604 Youth Council	824 Evening Rectory Receptionist
304 Folk Group	504 Librarian	605 Youth Group	
	507 Home School Assn.	608 Youth Activities Transportation	

I know that everything I have comes to me from God -- my life, my talents, my material possessions. I want to use these gifts as a good steward. Therefore, I offer my Time, Talent and Treasure to assist the parish in order to thank God, to express my trust that He will continue to bless me, to show my willingness to share and to use these gifts as God would want me to use them.

I estimate my contribution to parish support will be \$ _____ per week or \$ _____ per month or \$ _____ per year.

Signed *John T. Brown* Signed *Mary L. Brown*

The principal "tool" of the program is the Commitment Card. A typical card is shown above. Items listed on the card are tailored for each parish, listing its particular committees, programs and services. The card includes:

UPPER LEFT — Name and address of parishioner and spaces for others in the household; UPPER RIGHT — A section noting the "needs" of the parishioner or his family; CENTER — A listing of committees and programs toward which the parishioner may agree to give time or talent; BOTTOM — A general declaration that the parishioner is willing to share time/talent/treasure for

the benefit of the parish community.

(Some parishes add to this general commitment a request that parishioners note an estimated amount they feel they will be able to contribute to parish support over the next 12 months — see last line in the card above. It is an estimate only — a moral, not legal, commitment — an amount which may be altered by a change in circumstances. These parishes are seeking the estimate in order to realistically budget programs and services.)

Parishioner "needs" and "time/talent commitments" are number-coded to facilitate "pulling" the data from the cards.

STEWARDSHIP '79 PARTICIPATING PARISHES

NORTHERN TIER WEST

- Rochester Area
- Good Shepherd
- Guardian Angels
- Holy Ghost
- Our Mother of Sorrows
- St. Andrew
- St. James
- St. Jerome
- Mt. Morris
- St. Patrick
- St. Joseph

NORTHERN TIER EAST

- Auburn
- Holy Family
- Sacred Heart
- Geneva
- St. Stephen
- Marion
- St. Gregory

SOUTHERN TIER WEST

- Corning
- St. Patrick
- St. Vincent
- Elmira
- St. Patrick

SOUTHERN TIER EAST

- Cataraugus
- St. Francis
- Lansing
- All Saints
- Newark Valley
- St. John/Evangelist
- Owego
- St. Patrick