

About the house...

# Personality quiz will help you plan right bath decor!

By LIS KING

"Dear Tile Council," the note started, "please help me plan my bath."

"Dear Mrs. All-America," goes the answer, "read on. We think you'll find our special bathroom quiz helpful and fun":

- 1) In the morning you
  - a) get up early enough for a long tub soak
  - b) shower and breakfast at the same time every day
  - c) snooze late, then rush to get out
- 2) Your bathroom is
  - a) very important
  - b) as important as any other room
  - c) mostly functional
- 3) You want your bath to contain
  - a) a chaise
  - b) an extra sink
  - c) plants
- 4) Your hobbies are
  - a) reading
  - b) clubs
  - c) sports
- 5) Your dream bath should include
  - a) a sauna
  - b) an extra shower
  - c) a Picasso
- 6) Your favorite restaurant is
  - a) elegant
  - b) convenient and spotless
  - c) different and "in"
- 7) Your dream vacation would entail
  - a) lounging on a South Seas beach
  - b) visiting family
  - c) climbing a mountain
- 8) Your bathroom should be decorated
  - a) in pastel colors
  - b) conservatively
  - c) sleek

If you've got mostly A's, you need a truly sybaritic bath. Consider an oversized, sunken tile tub and a pretty but quiet color scheme. Serenity is the thing for you.

If you wind up with mostly B's, opt for a straightforward, no-fuss bath with lots of easy-care ceramic tile and generous storage. Your bend is traditional, so an Early American decor with brick-shaped ceramic tile on the floor is right for you.

If you're mostly C's type, your bath should be practical and contemporary, yet offer display space for plants, skin diving treasures, etc. An all-tiled bath in earthtones or some bold color is your thing. An active person, you're likely to contemplate tiling the bath yourself.

For ideas suitable for all three bath categories, send 50 cents to Tile Council of America, P. O. Box 2222, Princeton, N.J. 08540. You'll receive the Council's colorful, 16-page booklet, "Ceramic Tile, At Home Anywhere."

If you're the C-type, send 25 cents for the Tile Council's booklet on do-it-yourself tiling.

## Valance creates a new matching windowrama

More and more, people are using blinds as window treatments, keeping them simple. Levolor Rivas work well because they're colorful, easy to install and easy to keep clean thanks to their one-inch aluminum slats and slender ladders. They provide privacy and complete light control.

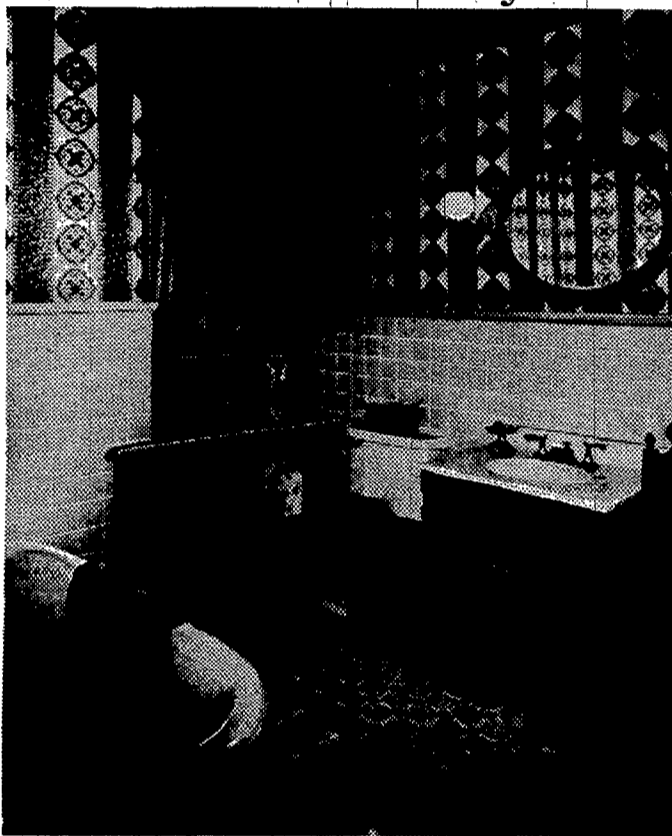
Now, what makes the best window blind even better is its finishing touch: a matching valance that covers the head and gives each blind an

### Sybarite's delight



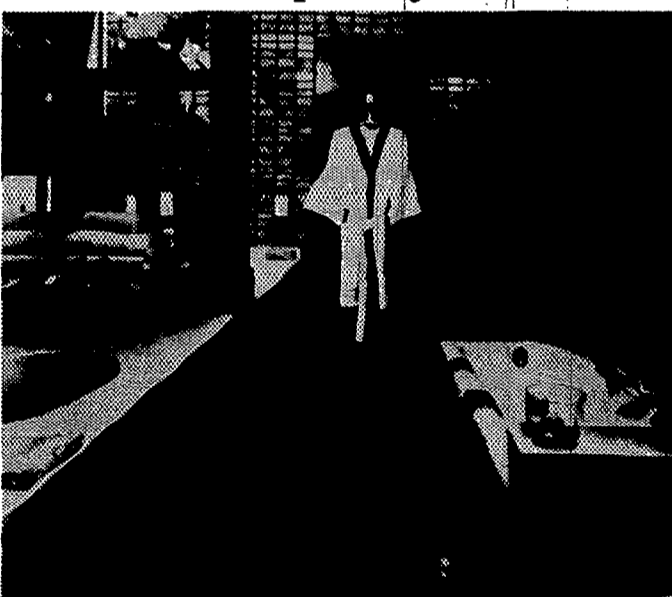
IF YOU SCORED MOSTLY A'S, a sybaritic bath with a sunken tub and sunning patio is for you.

### Traditional beauty



A NO-FUSS, TRADITIONAL bath such as this American Olean version is for persons scoring mostly B's.

### Contemporary chic



THIS CONTEMPORARY BATH boasting bright red Summitville tile and display space for skin-diving treasures typifies the C personality.

## Do-it-yourself carpeting good

Whether you want to cover an old unsightly floor or just make your home look more luxurious, new wall-to-wall carpet can produce decorating "magic."

At one time, carpet installation was a job for professionals. Today, with the growing array of D-I-Y carpets on the market, any homeowner can achieve outstanding results and save money in the bargain.

Carpet squares have come a long way from the original indoor-outdoor variety. Now you can find an enormous selection with textures and colorways to suit anyone's taste. Newest among the variety are the multi-toned Saxony plushes.

The neat thing about carpet squares is that they are "neat." You can bring them home from the store easily in your car. Armstrong packs them ten to a box, so the amount needed is easy to measure beforehand.

What's more, there's little or no waste with squares... particularly useful in odd-shaped rooms.

To apply, all you do is peel back the protective paper on the back, place on floor and



TRANSFORMATION equivalent to a decorating "face lift" takes place with wall-to-wall carpet that you can put down yourself! For only a few dollars and a few hours time, you can install this luxurious new Saxony plush carpet called Kings Valley from Armstrong. Six decorator-inspired colorways are available in 12" x 12" carpet squares.

Kings Valley, Armstrong's newest addition to its do-it-yourself line, is available in 12" x 12" carpet squares.

The carpet is made of bright-luster nylon yarn and has its own high-density foam self-stick backing. Six colorations are available.

Kings Valley is made entirely from synthetic components, which means the squares can be safely installed in basements, bedrooms and other high humidity areas. The 100% synthetic composition effectively resists rot, shrinkage and mildew.



**Ace Swim Service**

MEMBER  
ESTABLISHED  
NEW YORK  
CHAPTER



NATIONAL  
SWIMMING POOL  
INSTITUTE

and



**WOOD STOVE  
JUNCTION**

INVITE YOU TO JOIN THEM AT THE  
1979 EVERYTHING FOR YOUR HOME  
SHOW AT THE ROCHESTER WAR MEMORIAL  
THURSDAY MARCH 29 THROUGH SUNDAY APRIL 1

SEE OUR DISPLAYS OF

SHARKLINE ABOVE  
GROUND POOLS

- 7 Models Available
- Film presentations on the Bio-Guard Pool Maintenance Program

WOOD BURNING STOVES  
Featuring  
GLASS FRONT STOVES

enjoy this stove as you would any open fireplace  
And it heats you, not the great outdoors

SPECIAL SHOW PRICES  
ON WOOD BURNING STOVES &  
SWIMMING POOLS



**Ace Swim  
Service**



**WOOD STOVE  
JUNCTION**

CORNER OF CHILI & PAUL ROADS 889-3624 and 889-2310

3



SPRING PAINT SALE  
3 bucks off every  
gallon of Masury Paint!

Choose from white and 4,000 colors from our Custom Mix Catalog. No Special Mix.  
Offer valid with coupon only. Expires June 30, 1979

TESCHNER'S

decorators' choice wallpaper, carpeting and paints  
3350 Monroe Avenue Opposite Pittsford Plaza

3

THREE DOLLARS