

Rural Groups Aided By Sister

By JOHN DASH

Quite a bit happened last month down in Erlanger, Ky., and the diocese's own Sister Anne Urquhart was in the thick of it.

Sister Anne, regional staff person of the Office of Human Development and co-director of the Northern Tier Rural Life Ministry, helped to organize the third annual national consultation of diocesan rural life directors in Erlanger, Oct. 16-19.

More than 110 people from across the country attended the event under theegis of the

National Catholic Rural Life Conference (NCRLC).

And interestingly enough, she said, "about one third of them are women."

"The goal of the consultation," she said in an interview last week, "was to help rural life directors and others in rural ministry, to gain an awareness of what their role is in the Church as it relates to questions of social justice and advocacy; and to examine their ministries as they fit into diocesan structures."

It interested her, she said,

that that number of people "plugged into the NCRLC as a support group for their ministry." She pointed to the number as evidence that the organization's "programs and aids are recognized as coming from a credible organization."

The planners of the consultation attempted to integrate Scripture, Tradition and social justice, advocacy and group interaction, she said, "and the program achieved that goal."

The participants, she said, "had a lot of positive reactions to the programs. Most were pleased with the presen-

tations, and especially the opportunity to share in the interaction sessions."

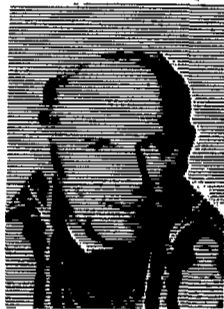
"The spirit of community that developed," she observed, "especially in the Liturgy and at mealtime and during the group interaction, helped that community bond grow."

"It was a heavy program," she concluded. "We worked right from 9 a.m. to 9 p.m.; but it was worthwhile, it accomplished what we wanted it to. Everyone went away with some practical suggestions he or she can apply in his or her own area of rural ministry."

TV Mass

The Sunday Mass for shut-ins, to be broadcast by Channel 10 on Nov. 26, the Feast of Christ the King, will be offered by Father Ronald Stacy of St. Stanislaus Parish.

Musical selections will be traditional Polish hymns from the Shrine of Our Lady of Czestochowa at Jasna Gora in Poland.



SOMEONE FOR THANKSGIVING

THE HOLY FATHER'S MISSION AID TO THE ORIENTAL CHURCH

You'll be happier this Thanksgiving if you give something of yourself to someone who has nobody.

Giving belongs in Thanksgiving.

SOMEONE WHO HAS NOBODY Attend Mass that morning in your parish church.

Take fifteen minutes to visit someone in the hospital.

Have someone who eats alone join your family for turkey and all the trimmings.

Better yet, feed someone who needs food.

There are millions of people in the world who have hollow eyes and swollen stomachs because they have no food.

We don't see them because they are overseas.

We know they're there, however.

Can we ignore them, let them starve?

Your \$20 by itself will feed a family of war-victims for a month.

\$200 will feed ten families.

\$975 will give a two-acre model farm to a parish in southern India, so that the priest can raise his own food and teach his people better crop-production.

St. Mary's North Pudukad, India, is one of the seven churches built or founded by St. Thomas the Apostle. Now over 1,500 years old, it is sadly in need of reconstruction. \$3,500 has been collected locally from the poor parishioners. Another \$3,500 is needed to complete the work. Any amount you can give will help.

Giving belongs to Thanksgiving, it's part of life.

How much will you give back to God?

A GIFT FOR ETERNITY The good you can do by remembering the missions in your Will goes to your credit eternally. Our legal title: CATHOLIC NEAR EAST WELFARE ASSOCIATION.

Dear Monsignor Nolan:
ENCLOSED PLEASE FIND \$ _____
FOR _____
NAME _____
STREET _____
CITY _____ STATE _____ ZIP CODE _____

THE CATHOLIC NEAR EAST WELFARE ASSOCIATION



NEAR EAST MISSIONS

TERENCE CARDINAL COOKE, President
MSGR. JOHN G. NOLAN, National Secretary
Write: CATHOLIC NEAR EAST WELFARE ASSOC.
1011 First Avenue • New York, N.Y. 10022
Telephone: 212/826-1480

HAWAII THIS WINTER

FANTASTIC!!! That's what our clients say about the rooms, the service and the beautiful lobby with its own waterfall!!! That's why we chose Waikiki's Hyatt Regency for our February and March Two Week Four Island Tours!!! "On the Beach at Waikiki." Add stays at the Oceanfront Surf Hotels on the Neighbor Islands and you have a Hawaiian Tour that can't be beat!!!

Call for Brochure You'll Be Glad You Did!!!

VAN ZILE TRAVEL SERVICE
244-8300 223-3060 538-4800
1786 Monroe Ave. Eastview Mall Caledonia

WE SET THE STANDARD FOR SERVICE . . .

FOR SALES SELECTION SAVINGS

Factory trained mechanics, skilled technicians concerned with the safety and performance of your automobile. Daily rental cars available long term leasing with the complete Chrysler Plymouth line to choose from.

Our knowledgeable sales forces primary interest is YOU. Come in today and see our exciting new line up. From the beautiful new Fifth Avenue Edition to the economical new Champ. We want to show you that we do SET THE STANDARD!

EastView
CHRYSLER-PLYMOUTH INC.
2645 VICTOR PITTSFORD RD. NEXT TO EASTVIEW MALL

SUN
TEF
NA
Igran
danc
Naza
Free

CAS
LEC
new
Naza
7-8:3
Cent
same
Italia
regis
2525

REI
PA
poli
prize
Inte
show
Satur
Scho
Fren
Man
and
Cult

TRE
TUI
John
12:5
21, a
Sout
stunc
thro
9:15

DO
CAL
Free
Men
50 N
at L
Tod
clari
Dur

SEM
MA
ters
Dry
Ho
tom
Nov

ST/
MA
at Plar
Frid
Jan
Skie
Dec
244

RE
TEC
disc
coll
tod
Ro
Cha
Fren
Cha

RO
ML
Nov
The
mu
seas
with
Abs
Per
18
cur
and
mal
473

RO
RI
Th
250
Ro
Or
Bri