

Work magic on walls—without working yourself into a frenzy!

We've all had to cope with redecorating problems at one time or another and most likely it's been more drudgery than fun.

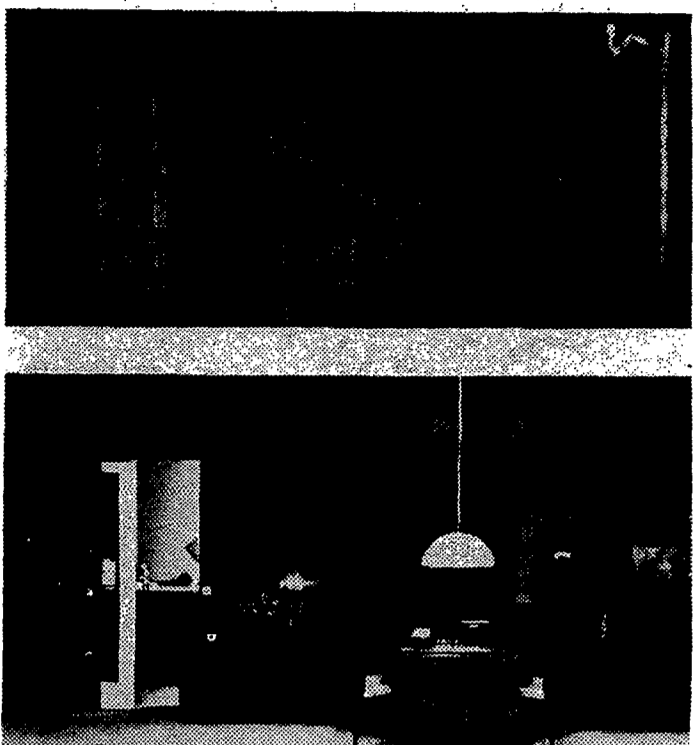
Sometimes in the midst of paint, wallpaper, rollers, brushes and general discord we've wished for a little magic to POOF!—make our home improvement worries vanish.

Now we can do just that for ourselves by making use of System Cado wall units by Cado/Royal System, Inc.

System Cado wall units can work miracles in your home. Based on a series of matched floor-to-ceiling solid wall panels to which shelves and cabinets may be attached at any point without visible support, System Cado offers a boundless number of possible arrangements.

Choose from shelves of many depths, desks, tables, a bar, multi-drawer chests, glass-fronted cabinets, record storage and hi-fi cabinets and allow your unsightly room to undergo a metamorphosis.

Available in superior woods of Bangkok teak,



LIKE MAGIC you can transform a barren space into a stylish living area with some help from System Cado wall units.

oiled walnut, Brazilian rosewood, natural oak, and, most recently, mahogany, System Cado can be cut to

follow the contours of an interior exactly, and through its exclusive and unique mounting system the vertical wall bears the load.

So make those ugly walls and pipes disappear behind a wall of System Cado. Levitate your furniture off the floor onto the walls for better use of space and a total working area. System Cado can perform magic for you!

inch-thick (R-19) fiber glass insulation varies depending on where you live. For the average 1400-square-foot house, insulation costs about \$275.00.

Certified insulation assures performance

Homeowners can save up to 30% on the energy used for cooling and heating their homes by having from 6 to 12 inches of fiber glass batt insulation on the attic floor, according to the National Bureau of Standards and other energy experts.

"For the best buy, though, be sure to read product labels and purchase insulation according to 'R' value. 'R' is the product's resistance to heat transfer rating," say the experts at the CertainTeed Home Institute.

Simply translated, the higher the R-value, the more energy you'll save. Too, R-values are additive. For example, six-inch-thick batts of fiber glass insulation are usually rated at R-19. Twelve inches of the same material give an R-38 value.

You'll find R-values on each package of fiber glass insulation to make it easier than ever to compare different products and prices.

You should also look for the National Association of Home Builders Research Foundation certification label on each package. This label means the insulation will consistently maintain its R-value, for the life of your home.

Unlike blown-in products it'll never settle (which reduces its insulating efficiency). Too, when you install fiber glass insulation batts yourself, you know exactly what you're getting . . . not always the case when you have blown-in products put in your attic.

CertainTeed's fiber glass insulation product packaging offers another advantage, too. Each bundle or roll has sturdy handles on one end, making it a snap to get it into the attic.

Complete diagrammed do-it-yourself installation tips are also included on each package.

Insulating the attic yourself usually takes an afternoon's time for the average-sized home. In most cases, all you do is lay batts of insulation between the joists on the attic floor, then just relax and watch your dollar-savings mount as energy consumption for heating and cooling drops.

The cost to insulate the attic yourself with 6-

Dishwashers now add to the decor!

Now you can use your dishwasher for flexibility in matching almost any kitchen decor.

Hotpoint has a new model that has three reversible door panels in The New Naturals® colors: Coffee, Fresh Avocado, Snow, Harvest Wheat, and Almond.

The sixth decorator panel is already prime-coated so that it can be painted to match other accessories in the kitchen, or can be covered with contact paper, wallpaper, or anything else to suit decorator desires.

Additional options for

decorating are to remove all three door panels and insert a one-quarter-inch wood panel to match kitchen cabinetry.

or an optional kit (HDX44) is available to permit the addition of a black glass door panel.

Jet Building Supply, Inc.

Wholesale Building Products

1075 Jay Street, Rochester, N.Y. 14611

Phone (716) 464-0700

That old furnace give you the chills?

And it's going to be colder tonight? And the kids will all want to sleep in your bed because it's too cold in their room. And the whole family wants to move to Florida? Today!

Well, today you can move Florida to your family. Just call us for prompt furnace repair. And put a little sunshine back in your life. P.S. We handle a quality line of Rheem® heating equipment.



AS LOW AS \$295.00 gas unit

80,000 BTU Inst. Extra

Brandt Air Conditioning Inc.

237 Winton Rd. N.

288-4270

Over 40 Yrs. in Business *Rheem is the registered trademark of the Rheem Manufacturing Company.

Community's home-improvement loans with no-cost creditor life insurance makes this the best deal in town!

You can have your Community home-improvement loan at a low 12% annual percentage rate, plus no-cost creditor life insurance (if you're under 65). We're the only bank in town that offers it. So our monthly payments are the best deal in town.

And we interpret home improvement very broadly.

And our creditor life insurance is even more reasonable—it costs you absolutely nothing.

Here's how low our monthly payments are:

Amount Borrowed*	Term (mos.)	Monthly Payment	Total of Payments
\$1000	18	\$60.98	\$1,097.64
\$2000	36	\$66.42	\$2,391.12
\$3000	48	\$79.00	\$3,792.00
\$4000	60	\$88.97	\$5,338.20
\$5000	84	\$88.26	\$7,413.84

*At annual percentage rate of 12%.

Other amounts and terms available up to \$10,000 with maximum term of 10 years.

Community Savings Bank

Corner of Main & Clinton, Midtown Plaza, Exchange and Broad, 100 West Ave., 424 Ridge Rd. West, Long Ridge Mall, Irondequoit Plaza, 300 Waring Road, Panorama Plaza, 2000 Monroe Avenue, Pittsford (S. Main and Church), Perinton Square Plaza, Newark Plaza, Newark. Member FDIC

ofa? stock. ING 7770 NG EN ALL PRICES JYEEES C. TIMATES C.B. 117 EAT. DOOR CO. OOR CO. ISTER TREET RD DO answer by we