

# School Opens with New Policies, Programs, Personnel

A new school year begins at St. Francis de Sales, Geneva with much of the same determination and resolution as a New Year's Day Teachers and administration are armed with summer graduate courses, workshops and restful retreat reflections and resolutions.

This new school year, the teachers begin with some new policies, new programs and new personnel. The new policies arise from the School Self-Study that took hours of discussion and evaluation last year. The effect was unifying and goals and purposes gained consistency and challenge. New policies in homework and testing were formulated last year which will commence this September. Teachers see this consistency in thinking as an important return to routine and regularity. Many action steps of the self-study have been recommended and will be acted upon this school year.

The Open Court Language Arts program continues to be new each year. The program, initiated in 1973, has proven its value. The program is highly phonetic in its approach to the reading process. Another excellent feature of the program is its great stress on literature. The program teaches the students to read and write independently. It opens the door to the best in literary achievement and provides a meaningful correlation of all the language arts.

New in-depth studies in Science are being developed into the Junior High. New syllabi in Science and Social Studies for grades one to sixth will inspire many innovative techniques. Syllabi developed last year, in literature and language arts, will continue to broaden the experiences of the children in writing, speaking and drama.

The primary grades will be busily involved in the Rosner Program. This Rosner-Hammond sport plan is a program involving visual

and auditory discrimination and motor coordination. The children should experience steady growth as it zeros in on definite problems a particular child may have in a given area. It also enables the gifted child to progress at a more rapid pace because he is able to work at levels that challenge his ability.

Pre-school and kindergarten children will be involved in a new program called COPE, Cognitively Oriented Prekindergarten Experience. The purpose of COPE is to enhance the intellectual, language and social development of children. It consists of two complimentary curricula, the developmental and the achievement. The developmental curriculum includes activities to facilitate growth in conceptual-language, perceptual-motor and socio-emotional development. The achievement curriculum contains instructional units in five areas, including reading, mathematics, science, social studies and health and safety.

Children will continue to learn using rhythm instruments and will square dance in their music classes. The gym program will incorporate some of the



Fifth graders display their debating techniques. Seated are Lisa Liberio, Kurt Uhl, Guy Sindoni, Dominic Pollino and Frank DeMarcc. Standing is Paul Donahue

Rosner motor coordination techniques in the primary grades.

Prayer and service are important elements of the school atmosphere. Children compose prayers which are read over the PA, daily. A chapel in school is used frequently by classes for Mass or prayer services and is used by the faculty for prayer. The time that the faculty spends together in prayer helps each one to keep in mind the vision he has of helping each child to develop scholastically, spiritually, emotionally and physically to his greatest potential. It is not uncommon for the children to

visit the elderly in the nursing homes, make favors for them or help with projects in the parish community. The junior high children frequently help the primary teachers in varied activities.

## Student Total At 248

Hornell—St. Ann's School is expecting 248 students for the first day of school, according to Sister Mary Ambrose, principal, about the same as last year's enrollment.

For the second year, a back-to-school newsletter will be sent to every family in the parish, outlining the school's program and the calendar to be followed. Sister noted that the newsletter was well received last year.

Other programs at the school will be continuing from past years. The departmentalized sixth, seventh and eighth grades will continue, with teachers specializing in Social Studies, English, Math, Science and Religion teaching the three grades. Sister Mary Ambrose pointed out that the successful junior high program has been in operation for eight years.

Retired teachers also will be volunteering their time for tutoring and enrichment programs at the school.

## College Costs Increase

The increase in tuition and fees from 1975-76 to 1976-77 for the nation's state colleges and universities was well above the rise in inflation for the same period and was the largest percentage jump in four years, according to a study by the American Association of State Colleges and Universities (AASCU).

Based on a survey of 323 member campuses, AASCU found that the average undergraduate tuition and fees increased 8.3 per cent for state residents and 9.8 per cent for non-residents, raising tuition and fee costs per year to \$582 and \$1,466, respectively.

Graduate tuition and fees rose 6.4 per cent for residents (to \$1,849) and 9.4 per cent for non-residents (to \$2,654).

The six per cent increase in room and board rates was slightly less than the rise in the Consumer Price Index for the same period (6.4 per cent). The average charge for room and board for the year is \$1,215.

\*Let your child discover their gifts, talents at

### Precious Hours Creative Learning Center

PROGRAM INCLUDES

#### Pre-School Program

Small Groups; Reading Readiness; Math Readiness; Arts & Crafts; Music & Dance; Field Trips; Playhouse & Yard; L.D. Skills.

Gifts & Talents

436-9713

32 WETMORE PARK ROCHESTER, N.Y. 14606

1 to 5 AM or PM Sessions Per Week

Fall 1977

### Clergy Continuing Education and Adult Education courses

- Toward a Philosophy of Church Music
- Workshops in Christian Education
- Bioethics: Theology & Modern Science
- 20th Century Protestant Thought

Colgate Rochester Divinity School  
Bexley Hall  
Crozer Theological Seminary

Continuing Education Office, The Divinity Schools  
1100 S. Goodman St., Rochester, N.Y. 14620

Please send descriptive folder to:

Name \_\_\_\_\_

Address \_\_\_\_\_

City \_\_\_\_\_ State \_\_\_\_\_ Zip \_\_\_\_\_

"Have A Child With A Problem"?  
— Let Us Help

TOWN & COUNTRY SKILLS CENTER

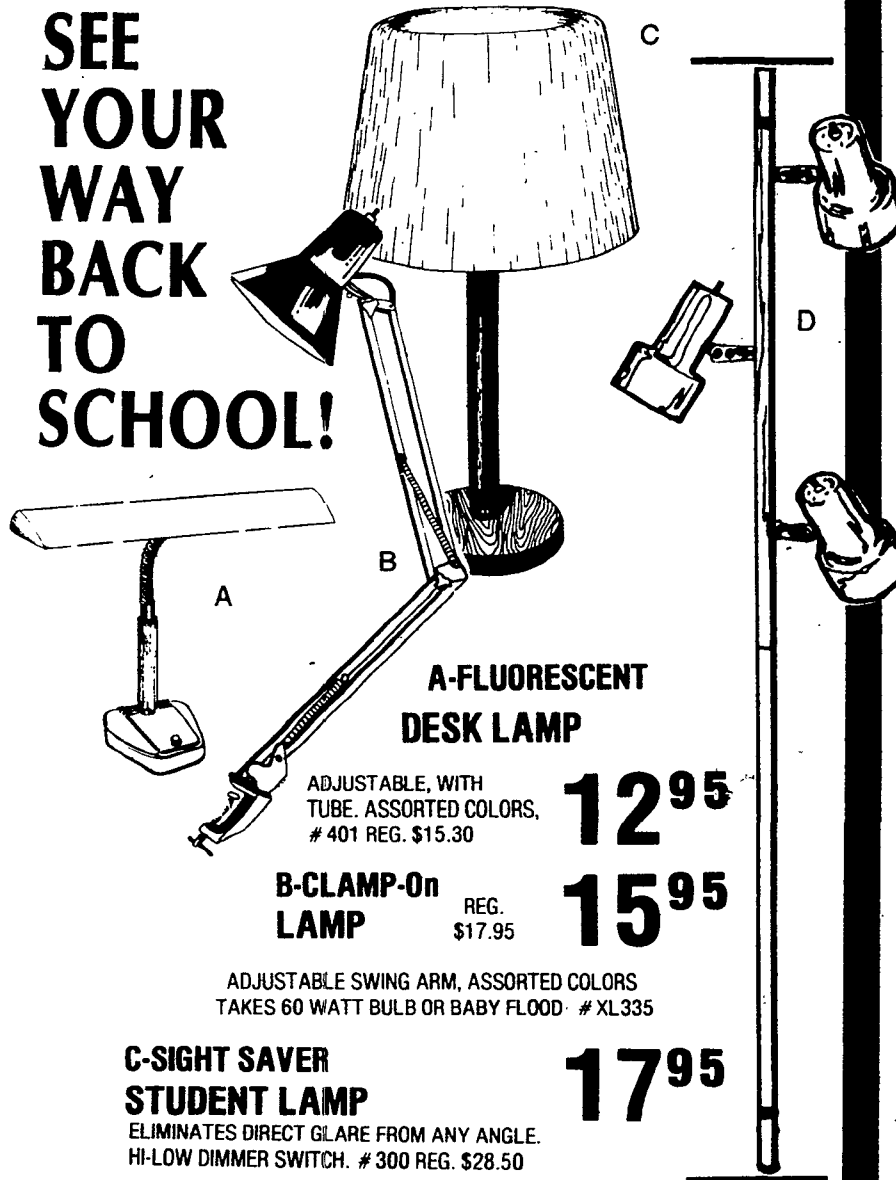
- READING IMPROVEMENT
- TUTORING ALL SUBJECTS
- DYSLLEXIA TRAINING
- HOW TO STUDY TECHNIQUES

Call Or Write For Our FREE BROCHURE

Serving the Special Needs of the Community Since 1956

WRITE OR TELEPHONE  
Town & Country Skills Center  
36 Thorndale, Pittsford  
381-3677

SEE YOUR WAY BACK TO SCHOOL!



#### A-FLUORESCENT DESK LAMP

ADJUSTABLE, WITH TUBE. ASSORTED COLORS, # 401 REG. \$15.30

12<sup>95</sup>

#### B-CLAMP-ON LAMP

REG. \$17.95

15<sup>95</sup>

ADJUSTABLE SWING ARM, ASSORTED COLORS TAKES 60 WATT BULB OR BABY FLOOD. # XL335

#### C-SIGHT SAVER STUDENT LAMP

ELIMINATES DIRECT GLARE FROM ANY ANGLE. HI-LOW DIMMER SWITCH. # 300 REG. \$28.50

17<sup>95</sup>

#### D-THREE LIGHT POLE LAMP

FULLY ADJUSTABLE BULBETS. INDIVIDUAL ON-OFF SWITCH. # 6711 REG. \$40.25

24<sup>95</sup>

#### COUPON

MANY HI-INTENSITY, INCANDESCENT AND FLUORESCENT DESK LAMPS FROM WHICH TO CHOOSE 10% OFF\* OUR ALREADY LOW, LOW PRICES \*NOT ON SALE ITEMS.



\*IN STOCK ONLY SALE ENDS AUG. 27

Maynard's ELECTRIC SUPPLY, INC.  
Plenty of free parking

428 STATE STREET PHONE 546-1640 OPEN MON. THRU FRI. 8 A.M. TO 5:30 P.M.  
475 E. RIDGE ROAD PHONE 266-6068 OPEN MON. THRU FRI. 8 A.M. TO 5:30 P.M. THURS. TIL 9 P.M., SAT. TIL NOON