

Arkansas is a gem of a place for outdoors

'Natural destination' for pleasure-seeking vacationers, tourists

By NIKKI CALISCH
Managing Editor, Great Outdoors
Newspaper Service

A diamond mine is seldom thought of as an outdoor recreational facility. Yet the Crater of Diamonds State Park in Arkansas is just that. A unique attraction, the state park covers 867 acres of which 78 acres form the volcanic core containing the precious stones.

The Crater is the only known occurrence of diamonds in their natural matrix in North America. Acquired by the Arkansas Department of Parks and Tourism in 1972, the Crater has yielded over 60,000 precious stones since its discovery in 1906.

For a fee of \$2 (\$1 for children 6 to 15), visitors are welcome to prospect to their heart's content — and what they find is theirs to keep. Diamonds discovered at the Crater range from less than a carat to a recent 16.37 carat find that has been valued at over \$100,000. The largest diamond ever discovered here weighed 40.42 carats. It was unearthed while a private mining company was operating the Crater in the days before it became an Arkansas State Park.

The acquisition of the diamond mine for use as a state park facility indicates the imaginative and broad-ranging policy of the state in acquiring, conserving and developing natural resources for use by the people who enjoy the Great Outdoors.

This same principle is applied by the state to every conceivable natural outdoor recreational facility. Through its rapidly expanding state park system, Arkansas is increasing the opportunities for enjoyment of leisure and vacation time available within the state.

Explore facilities

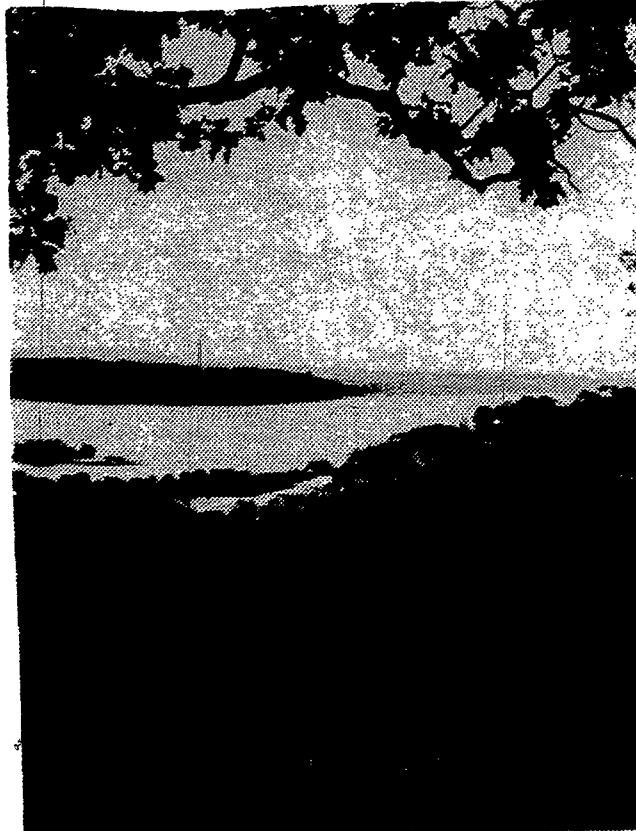
The annual practice of the Committee for the Great Outdoors since its founding 11 years ago has been to explore regional and state recreational facilities and to report on them so that people who love the Great Outdoors may have help in selecting their leisure time and vacation destinations.

This year, as in the past, an advance crew was sent in by the Committee to inspect the proposed area to determine its suitability as the locale for taking the photographs to illustrate the annual Committee for the Great Outdoors newspaper service.

'Natural destination'

Though Crater of Diamonds was not the controlling factor in the Committee's decision to go to Arkansas this year, the state's policy of expanded treatment of its natural resources for public use symbolized by the Crater did prompt acceptance of an invitation from the state to discover Arkansas — "the natural destination."

It was the recommendation of the Arkansas Department of Parks and Tourism that DeGray State Park be made the focal point of the Committee's activities because it offers outstanding facilities and the range of recreational opportunities required by the Committee. Headquarters was established at 96-room DeGray Lodge situated on an island in beautiful 13,400-acre DeGray Lake, and the advance party with the assistance of state officials located the photographic areas required and were ready to get to work



Diamond Lakes area

DeGray is situated in the Diamond Lakes Tourist Association area of the state, which extends from the southern extremity of the Ozark Mountains to the southern reaches of the Ouachitas.

It comprises a five-county area where national forest lands, five Corps of Engineers lakes, a major hiking trail and Hot Springs National Park offer a wide variety of recreation for outdoorsmen.

Best of all is the fishing. The area lakes and streams are filled with bass, crappie, bream, wall-eye and stripers. And of course, facilities for water sports are features of all the lakes — offering scuba diving, water skiing and happy, leisurely cruising through beautiful scenic areas. You can even camp on the water at a unique Camp-A-Float on Lake Ouachita.

Hunters will find deer, quail, pheasant and squirrel in abundance during the season in areas adjoining the parks.

Inland state

Since Arkansas is an inland state, there are no ocean beaches to entice swimmers, surfers and sunbathers. But the state parks and many privately operated resorts offer fine sand beaches on the lakes that sparkle in such profusion.

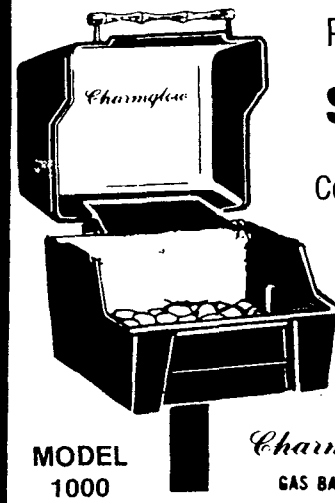
DeGray State Park has more than enough to keep an active vacationing family busy with its outstanding fishing, boating and swimming. There's a pool at the lodge as well as a sand beach on the shores of the lake. And there are bicycles for rental, tennis courts, and the 18-hole golf course.

For information on Arkansas
See Page 14A

LIVE DEMONSTRATION
SATURDAY, JUNE 18, 10 a.m. to 3 p.m.
You are invited to see our Charmglow representative demonstrate the finery of Charmglow Cooking.

SAT. ONLY SAVE 20%
ON ALL CHARMGLOW GRILLS
PURCHASED SAT. JUNE 18th

Charmglow
makes the big difference!



MODEL 1000

Charmglow
GAS BARBEQUE

PRICES START AT
\$215.00 List
Complete Ready to Use

Price includes Delivery assembly and normal installation in Monroe County

Cooks A Delicious Meal For Less Than Two Cents Worth Of Energy

FIREPLACE FASHIONS

1936 Hudson Ave. (Irondequoit) 1/2 mile north of 104 Xway

266-8967

Installation - Parts - Service Available

timberline lake park

1 Mi. East of Thruway, Exit 47—20 min. from Rochester on Expressway 490

VALLANCE ROAD LE ROY, N.Y.
Telephone: [716] 967-6635

Swimming—Hot Showers—Pavilion—Dump Station—
Water & Electric Hook—Ups—Store—Propane—Ice—
Flush Toilets—Rec. Building—Open & Shaded Areas.
Entertainment July 2 & Sept. 3

RIDGE

CAMPSITE
MT. MORRIS N.Y.

3 Miles South on Rt. 408.
Breath-taking view of Letchworth Park. Wooded and Open Seasonal sites still available

- SWIMMING POOL • SHOWERS
- PLAYGROUNDS
- REC HALL • ENTERTAINMENT
- PETS ALLOWED

Riverview Yacht Basin
18 Petten St. Ext. Southwest Side of Statton Bridge

663-0088
OPEN 7 DAYS

SHIPS STORE • PAINT SUPPLIES • MAINTENANCE SUPPLIES • MARINE HARDWARE • IMMEDIATE DOCKAGE FOR ALL OUR CUSTOMERS

PATRONIZE THE MARINE DEALERS ON THE GENESEE RIVER WHO ARE BRINGING LAKE ONTARIO BACK TO LIFE FOR YOU

<p>AMF ROBALLO "FISHERMAN'S DELIGHT" UNSINKABLE 3 YEAR GUARANTEED HULL!</p>	<p>Seafarer Yachts ECONOMICALLY PRICED. MCCURDY RHODES DESIGN 22'-28'</p>
<p>AMF SLICKCRAFT THE EXCELLENCE & QUALITY UNSURPASSED, WITH FULL RANGE FROM 17'-28'</p>	<p>Luhrs FULL LINE UNSURPASSABLE FOR SEAWORTHINESS FEATURING 25' OPEN SPORTSMAN</p>
<p>GLIPPER MARINE TRAILERABLE SAIL BOATS 21'-30' IN STOCK</p>	