

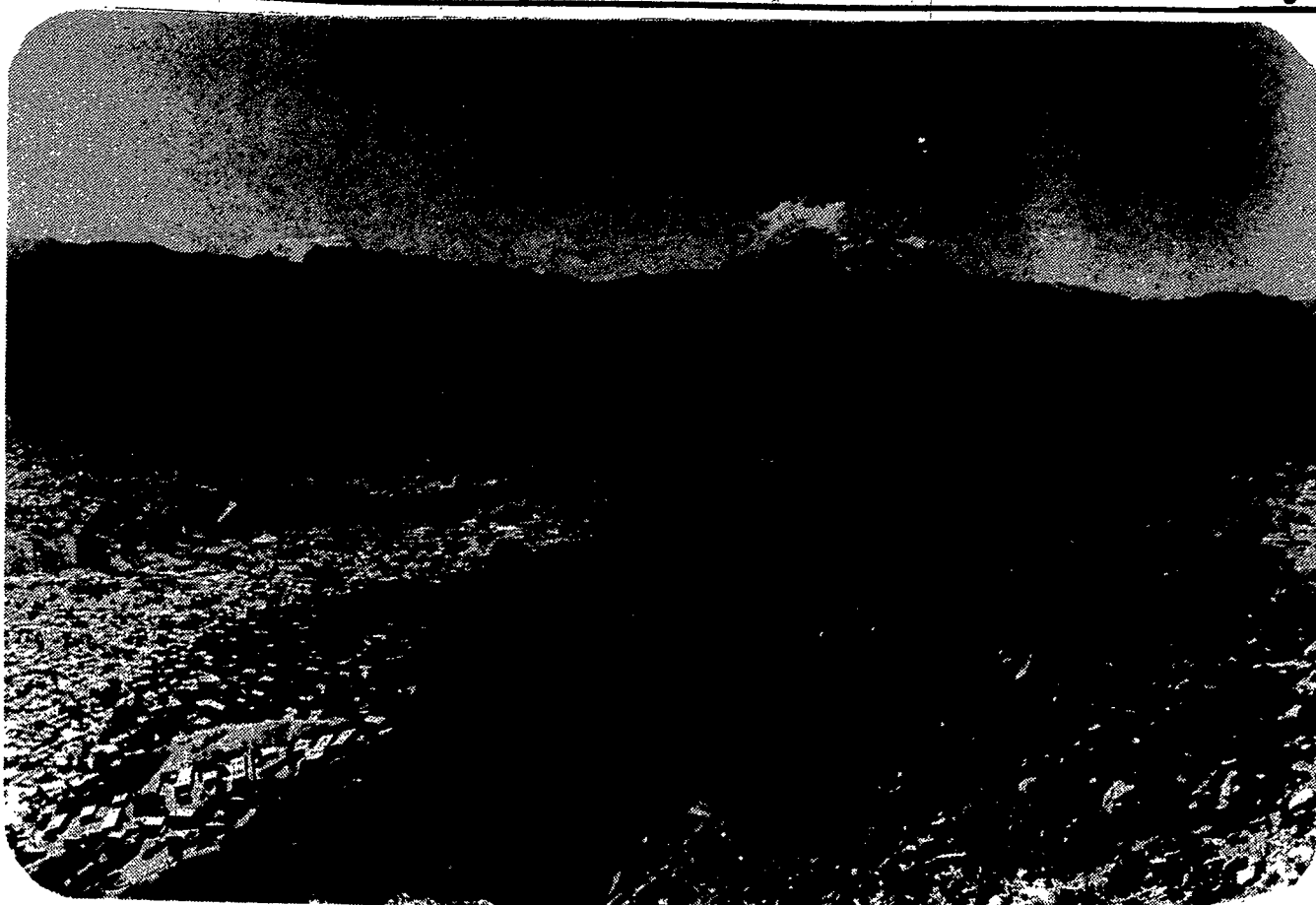
LaPaz

The Scenery

The magnificent majesty of some of the most spectacular scenery in the world (right) provides the backdrop for poverty which is equal in its devastation (below).

Bolivia, like most Latin American countries, is a land of startling contrasts. The sky-high Andes cradle the world's highest airport (13,000 feet above sea level) and as one proceeds down into the city proper he also descends into the depths of destitution.

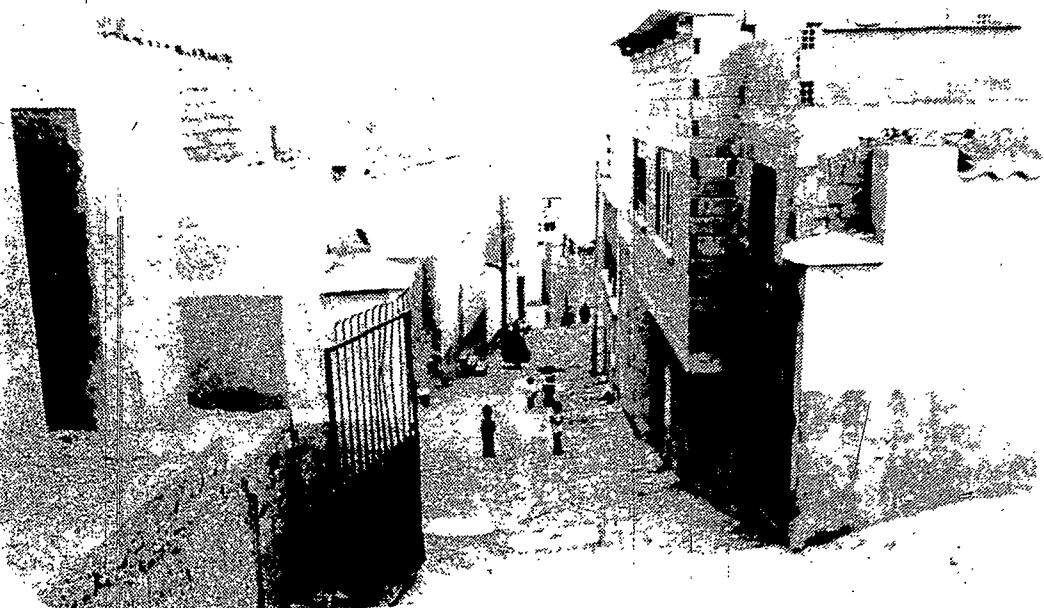
It is in this setting that missionaries from this diocese with the help of all diocesans worked to set up San Jose Obrero parish in an effort to raise the people's hope as high as their mountains.



Street scene.



Loaded down.



Looking down the cobblestone street from the church.



Perhaps of all the things in God's world His most beautiful creation is His children.