

You can raise room temperature while lowering your fuel bills

Keeping your fuel bills down and your room temperature up is more than a matter of fooling the thermostat. It can be done with a large measure of psychology.

Color is a good place to start the warming-up process. It doesn't have to be a major undertaking: touches like paintings, prints, wall hangings and cushions in warm, rich colors can start rooms glowing.

One surefire way to fan the psychological embers is with an area rug. Today's uninhibited rugs can go all over the place, creating islands of soft comfort and dazzling color on vinyl, tile or wood floors. And on top of wall-to-wall carpeting they will enliven what might have become a "boring" floor, or even disguise a bald spot!

The ryas that have become a decorating staple, thanks to Scandinavian tradition and inventiveness, impart a feeling of warmth and coziness with their thick shaggy textures.

Modern ryas are woven of richly-colored yarns in patterns which continue the old Viking heritage with the most modern designs and fibers.

Now ryas have an added fashion appeal in the rugs just brought here by Ege Rya, the Danish company originally responsible for introducing the rya rug to



WALL-TO-WALL CARPETING, practical in some instances, can produce a bland room. The owners of this living room up-dated and added zest to the seating group in front of their fireplace with only the addition of this sculptured Danish area rug, "Hekla," from Ege Rya's moderately priced "New Look" collection. Despite its multi-levels, the rug feels even underfoot as a result of a technological achievement in the weaving process. It is made of acrylic.

America in the 'Sixties. Their New Look collection is sculptured.

The multidimensional effect is produced with a brand-new weaving technique, developed by the company, which results in a visually appealing mixture of high and low pile, but which gives an even tread underfoot.

With their ups and downs in surface texture, the new designs take on intriguing effects such as free-flowing ribbons of molten color and other

abstract images with a pattern-on-pattern look, many of them in geometric forms.

Their colors, selected to blend with the newest American home fashion trends, are in either subtle, muted tones or in vibrant shades that enhance the fresh quality of the designs, making them natural "warmer-uppers."

So, when temperatures drop, there are ways to make personal thermometers rise. And all without an extra sweater.

You-sew-it decorating easy with shears for heavy fabric

While making a major improvement of an entire room or whole area of the house might require the services of a professional, there are certain decorating projects the designing woman at home can do herself and save money.

The popularity of versatile polyester double knits in fashion sewing has led many women to wish they could use these easy-to-sew fabrics to make a room more attractive. The challenge, heretofore, has been the big job of cutting something like 360 feet of heavy weight polyester double knits which is often required to create a new

look in one area. But now the cutting is the easiest part of the whole project, thanks to the new shears for heavy fabrics from J. Wiss & Sons Co. now available to home sewers. You will be able to easily recognize these professional 9" shears by their fashionable Mandarin red handles. As a result of the special knife-edge blade, you can now cut heavy fabrics with ease. Coordinate them with other previously hard-to-cut fabrics and come up with a room setting that any professional decorator would admire.

For example, heavy textured double knits are economical for a bedroom setting because of their 60-inch widths, and they can be stretched around the legs of a chair. They make ideal slipcovers and bedspreads, particularly when finished with the added touch of self piping. The problem of what to do with a plain looking radiator cover can easily be solved by cutting a vinyl porch shade to fit.

"DROUIN BROS. INC."
ROOFING and SIDING
 CALL TODAY FOR FREE ESTIMATE
 DAYS 544-7350 EVENINGS 621-2458
INSTALLATION GUARANTEE

Your roof is the most important part of your home, for best protection we install aluminum drip and rake edge double valley and 36" starter strip. Top brand use only, Asphalt roof shingles sealdown 240 lb., 265 lb., 300 lb., per sq. carry a 15, 20, or 25 year warranty.

Siding: Aluminum, Concorde, Plastic shake, Solid Goon Vinyl by B. F. Goodrich. Aluminum trim covering and Gutters.

OFFICE LOCATED at 115 EAST RIDGE RD.

Don't be bugged by pesky visitors

Like the FBI's "Most Wanted List," the home-maker of today has another list — the Ten Most Unwanted — those household pests that invade the home without invitation.

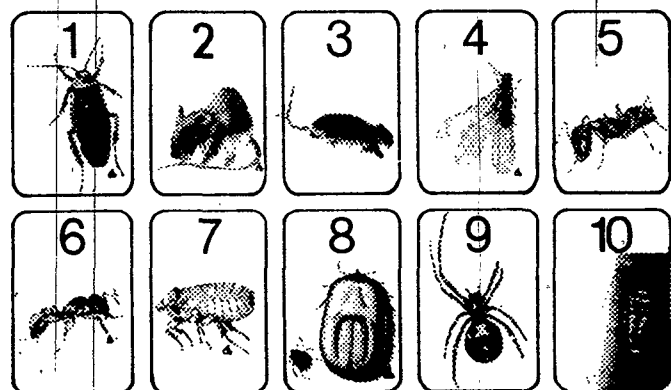
According to the National Pest Control Association, a non-profit organization of pest control companies that specialize in controlling rodents and insects in and around structures, these unwelcome guests do an estimated \$4.5 billion in damage every year. Even worse, many household pests actually endanger your family's health.

Unfortunately, even the cleanest house on the block can be, and often is, visited by unwanted pests. Household pests are not strictly regional or seasonal. Modern climate control enables pests to exist and multiply indoors all year. Rodent problems, however, increase in autumn when low temperatures drive rats and mice inside seeking food and shelter. Roaches hitchhike into homes in grocery bags.

Other insects ride in on shoes or clothes. Clearly, pest control is a year-round job no matter where you live. Effective pest control is more than a grocery store spray, a fly swatter, and a mouse trap. The fundamental problem: pests thrive on food, warmth and water — three elements that make your home livable.

Since you cannot eliminate these basic appeals, concentrate on preventive measures:

• Frequently clean possible pest hiding places and breeding spots — cracks and



THE TEN MOST UNWANTED household pests according to the National Pest Control Association: 1. cockroach 2. house mouse 3. Norwag rat 4. subterranean termite 5. house ant 6. carpenter ant 7. flea 8. brown dog tick 9. spider 10. Silverfish.

crevices in floors, baseboards, vents, under staircases, etc.

• Dispose of all debris and garbage daily.

• Screen outside doors and windows and close outside cracks and crevices where pests can enter your home.

• Buy only small quantities of food you seldom use. Store food in tight containers which insects cannot invade.

• Clean up crumbs and spilled foods.

• Inspect incoming grocery bags and soft drink containers. Pay particular attention to produce packages.

If you use pesticides, remember:

• All pesticides are potentially harmful is misused.

• Purchase only pesticides bearing Environmental Protection Agency (EPA) registration numbers and registered for the use which you intend for it. These products are effective,

safe and not harmful to the environment if used as directed.

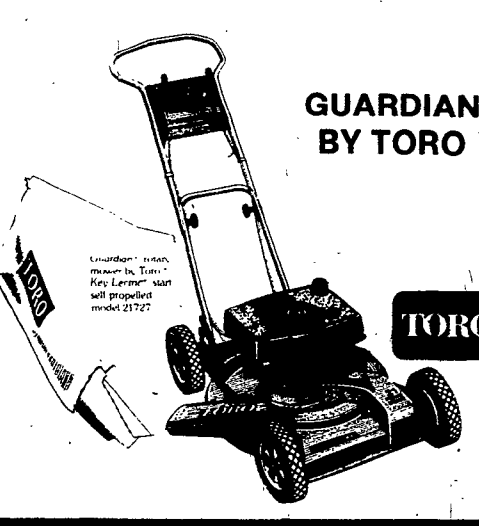
• Read label before you buy pesticides. Follow directions. Don't use insecticides registered for cockroaches on your garden insects, for example.

• Store unused pesticides where children cannot reach them. Dispose of properly and carefully.

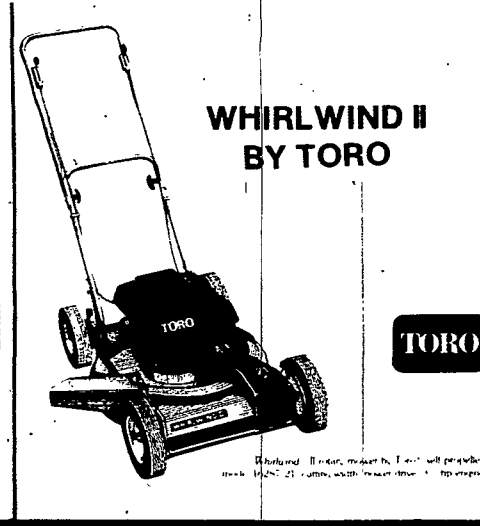
When you need professional help, call in an expert. Pest Control professionals receive specialized training to solve your pest problems safely within the context of your home and natural environment.

The Ten Most Unwanted: Common Household Pests and What To Do About Them is a recently-published booklet available for 25 cents to cover postage and handling from National Pest Control Association, Dept. CA, Suite 1100, 8150 Leesburg Pike, Vienna, Va. 22189.

SAVE UP TO \$100 ON EARLY BIRD SPECIALS FROM HOFFMAN APPLIANCE.



GUARDIAN BY TORO



WHIRLWIND II BY TORO

TORO GAS MOWERS
SAVE YOU UP TO 30% ON GASOLINE COSTS

SAVE \$100




Whirlwind Rider with Easy-Empty Grass Catcher



GRASSMASTER BY TORO

Use Our Own Revolving Charge Plan or -



HOFFMAN'S

HOFFMAN'S HAS THE LOWEST GUARANTEED PRICES ON ALL TORO GARDEN EQUIPMENT • COME IN & GET OUR PRICES!

3000 WINTON RD. S.
IN TODD MART PLAZA
Daily 10-9, Sat. 5:30

2
LOCATIONS

467 N. GOODMAN ST.
NEAR MAIN ST.
Daily 9:30-9: Wed. & Sat. 5:30