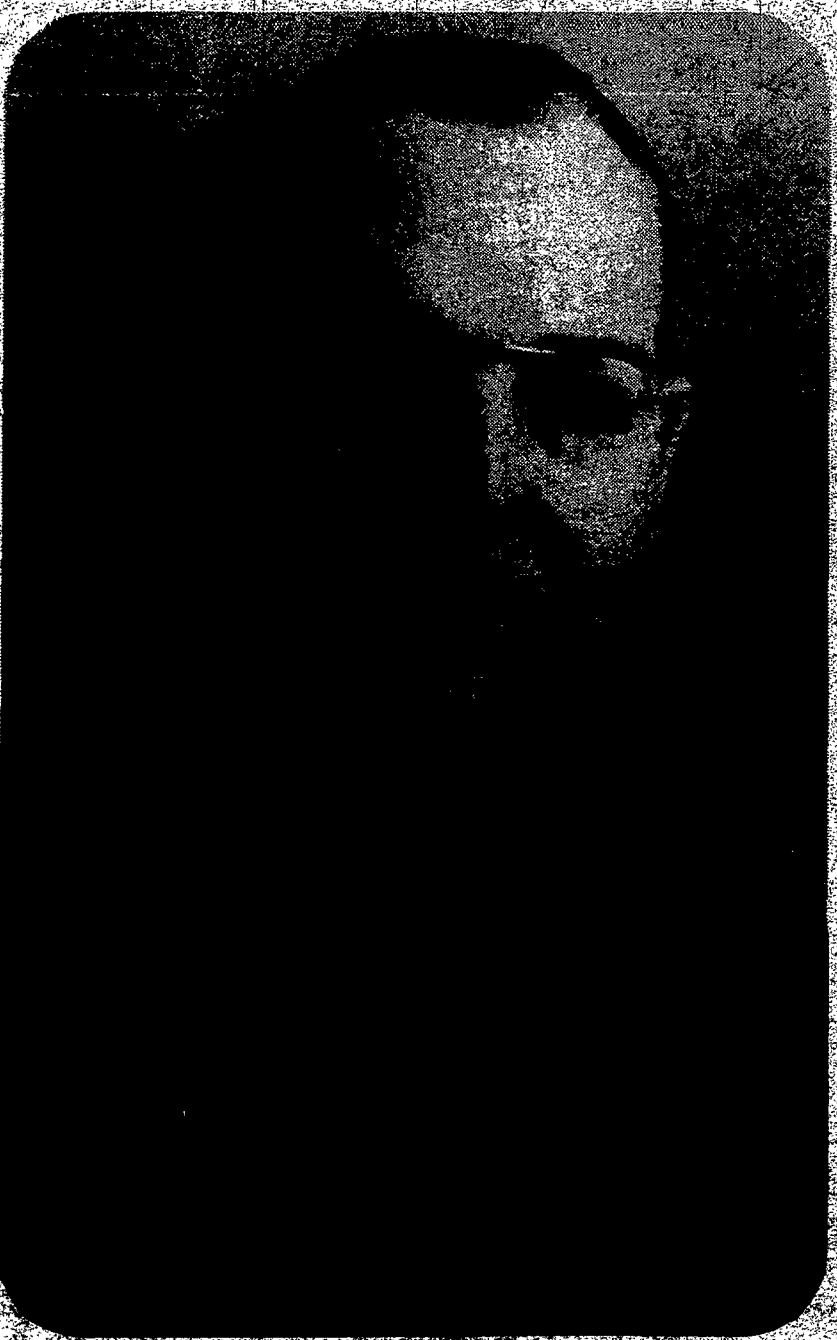


FATHER HUDSON

# ... History

(Continued from Page 2A)  
Growth in enrollment made expansion necessary. In 1942, 10 more acres were purchased up the slope, allowing space for a new ballfield. There are now 13

cabins, the two most recent of them winterized (1974). Out-buildings have been improved from time to time and the Main Building, often remodeled in part, was  
(Continued on Page 6A)



Magr. Linder

*Congratulations  
Camp Stella Maris  
on your 50th anniversary*

**NOW!**  
**Family size  
Pepsi for Pepsi  
all the time.**

rs  
es  
s  
cil  
ss