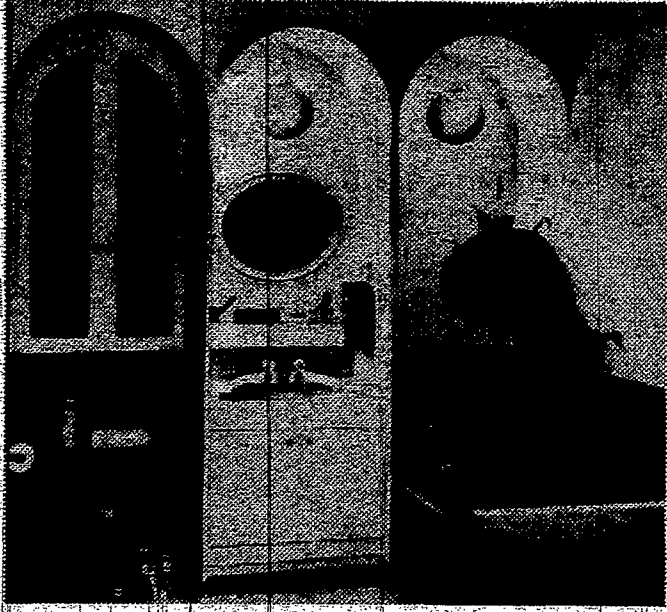


Six basic elements to look at when planning to remodel your bathroom



ANCIENT GREECE AND ROME live again! This classical bath fits a five-by-eight foot area and combines all six elements of good bathroom design. Three arches are built of 1/2" untempered hardboard. Simple globe lighting adds to the over-all effect with a free-hanging mirror over the lavatory. There is open access to toiletries, while ample storage for towels and linens is available. Fixtures by Eljer Plumbingware.

If your bathroom is rather drab, with old-fashioned fixtures and definitely in need of remodeling, it is probably like most — about 5 feet by 8 feet in size.

If so, you won't find too many idea bathrooms in advertisements or editorial this size to help you — most such baths are larger and your problem will be to convert the ideas found in such large rooms down to fit your space.

Therefore, before you remove the first wall tile or start tearing up the floor covering, take a few minutes to plan your bathroom remodeling.

There are six basic elements of better bathroom design for you to consider planning.

• The basic plan of the bathroom must be a good one — one that will work even in the most restricted space. In many cases you will be working with all plumbing pipes placed on one wet wall. It will be most economical to take this arrangement and develop variety and design without a change in plumbing.

However, to create the best plan for your bath-

room you may find it necessary to change some fixture locations. If this is desired, by all means contact your plumbing contractor because proper installation and adherence to plumbing codes are mandatory.

• Choosing the right fixtures is very important because remodeling your bathroom is pointless if built around a poor choice of fixtures. Don't skimp on quality, not if you want to be assured of satisfaction, performance and beauty in the years ahead. Be sure you consider colored fixtures added spark for your bath at small added cost.

• Adequate storage is so fundamental yet so often overlooked in the bathroom. Be sure you provide space to store towels, tissues, cleansing materials, cosmetics, etc. and storage space is probably more important in a small bathroom than in a large one.

• Lighting must be adequate for proper application of cosmetics, shaving, and believe it or not, reading. Let's face it, everyone needs a morale boost when they first get up in the morning — and warm lighting in the bathroom

can at least make you look much better than you feel.

• Adequate ventilation is an item easily overlooked in bathroom remodeling. Ventilation can do more than just make the bathroom smell fresh — it can help keep it clean, warm, remove excess moisture and help control mildew.

• Every homeowner should have a bathroom that's easy to maintain. Begin by choosing quality fixtures, with finishes of glass-hard vitreous china or durable enameled cast iron. Consider the new, easy-to-maintain finishing materials such as vinyl wall coverings, laminated plastic surfaces, and ceramic tile for easy cleaning without sacrificing decorative appearance or utility.

To help plan your bathroom remodeling, contact your Eljer contractor or write: Eljer Plumbing-

ware, Wallace-Murray Corporation, Dept. MAS, 3 Gateway Center, Pittsburgh, Pa. 15222.

SAVE OVER 1/2 * USUAL MADE TO ORDER PRICES

COVER THIS... IMPROVE HEAT AND LOOKS

9.95 Reg. \$22.00
14" x 25" x 12"

KUSLOW RADIATOR ENCLOSURES

• SPARKLING BEAUTY • Ready to Paint To Room Colors • GREATER HEAT

HEIGHT	LENGTH	DEPTH	STOCK	ENCLOSURE	STOCK	ENCLOSURE	STOCK	ENCLOSURE	STOCK	ENCLOSURE
12 1/2"	18 1/2"	24 1/2"	27 1/2"	32 1/2"	38 1/2"	43 1/2"	48 1/2"	53 1/2"	58 1/2"	63 1/2"
12 1/2"	18 1/2"	24 1/2"	27 1/2"	32 1/2"	38 1/2"	43 1/2"	48 1/2"	53 1/2"	58 1/2"	63 1/2"
ADD 7.00										
ADD 8.00										
ADD 12.00										

EXPOSED RADIATORS ARE OLD-FASHION

DEPTH: 6" x 6" x 10" x 12" x 14" x 16" x 18" x 20" x 22" x 24" x 26" x 28" x 30" x 32" x 34" x 36" x 38" x 40" x 42" x 44" x 46" x 48" x 50" x 52" x 54" x 56" x 58" x 60" x 62" x 64" x 66" x 68" x 70" x 72" x 74" x 76" x 78" x 80" x 82" x 84" x 86" x 88" x 90" x 92" x 94" x 96" x 98" x 100"

ORDER ANY COMBINATION LENGTH-HEIGHT-DEPTH (REQUEST FREE BOOKLET)

MARY CARTER PAINT CENTER
535 CHILI AVE. corner Thurston 235-1360

IF YOU DO NOT BUY FROM US... WE BOTH LOSE!

Haven't you done without a Toro long enough?

Free KEY-ELECTRIC START! **Save \$40** on a **Power-drive Toro Guardian.**

Free KEY-ELECTRIC START! **Save \$40** on **Key-Lectric Start Toro Grassmaster.**

TORO GAS MOWERS
SAVE YOU UP TO 30% ON GASOLINE COSTS

Save \$50 Get **Til-Row attachment** at no charge with **Toro Tiller** Model #58220

Free REAR-BAGGING ATTACHMENT

Easy Empty grass catcher **YOURS** with Toro

Use Our Own Revolving Charge Plan



HOFFMAN'S HAS THE LOWEST GUARANTEED PRICES ON ALL TORO GARDEN EQUIPMENT • COME IN & GET OUR PRICES!

3000 WINTON RD. S.
IN TODD MART PLAZA
Daily 10-9, Sat. 5-30

2 LOCATIONS

467 N. GOODMAN ST.
NEAR MAIN ST.
Daily 9-9:30, Wed. & Sat. 5-30

IN GROUND POOLS

— Deal Direct with the Manufacturer & Save —
ROCHESTER-OWNED-OPERATED & MANUFACTURED —
CUSTOM MADE SIZES & SHAPES
REPLACEMENT LINERS FOR ALL VINYL POOLS

- Ask About Our Conditional Manufacturers Guarantee
- Quality Workmanship
- Do It Yourself or We Will Install
- Free Consultations Given

494-2010

VISIT OUR BEAUTIFUL HEATED SHOWROOM 2 1/2 FULL SIZE IN GROUND POOLS ON DISPLAY

allman POOLS INC.
7300 LAKE RD. BERGEN, N.Y.

Talks Radio 490 To Bergen East - Turn Right At Home End Turn Left To Rt 19 - We Are 2000, Next To K.O.A. Camp