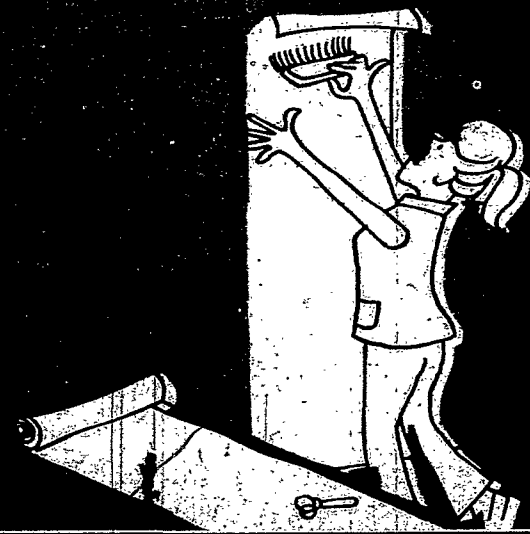
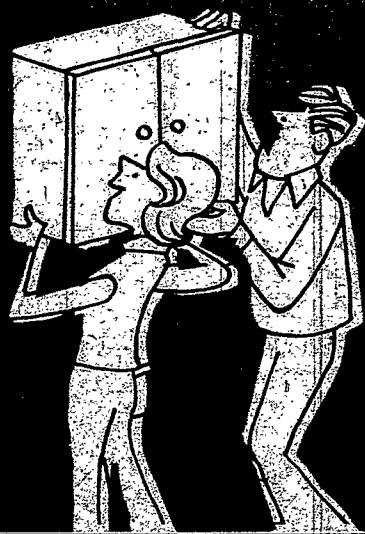
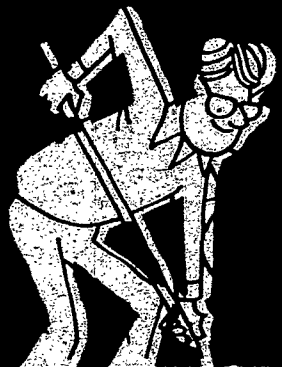
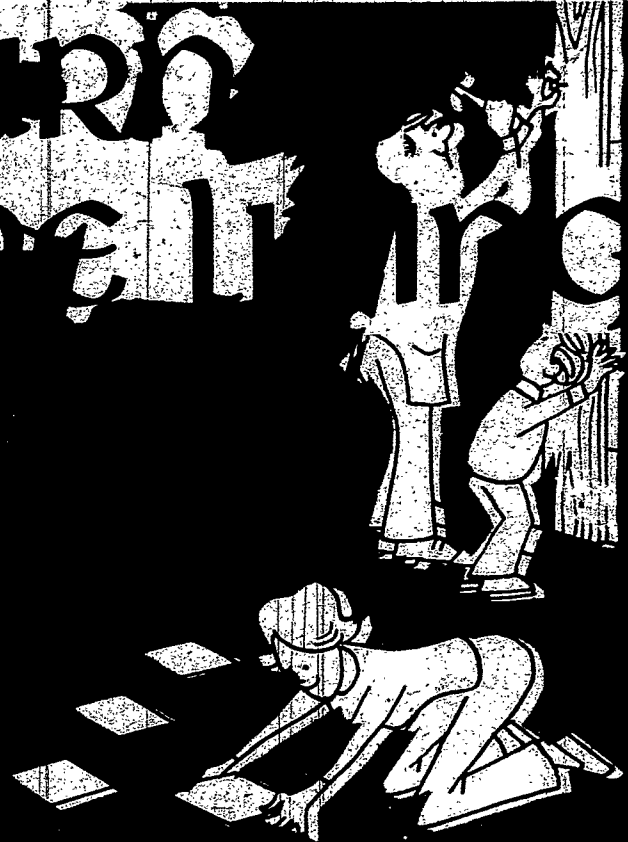
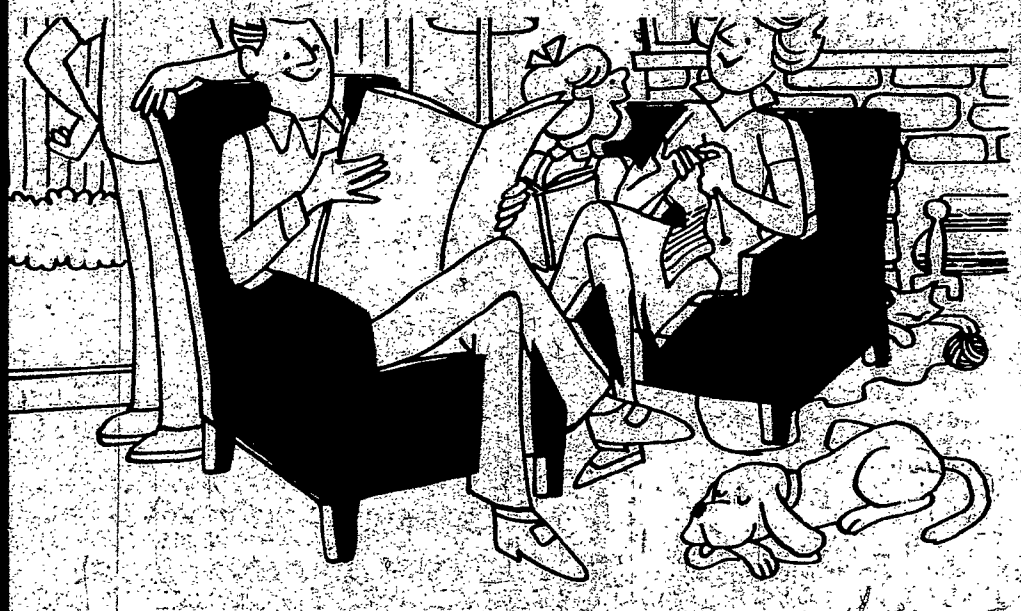


COURIER JOURNAL GUIDE TO LEISURE LIVING

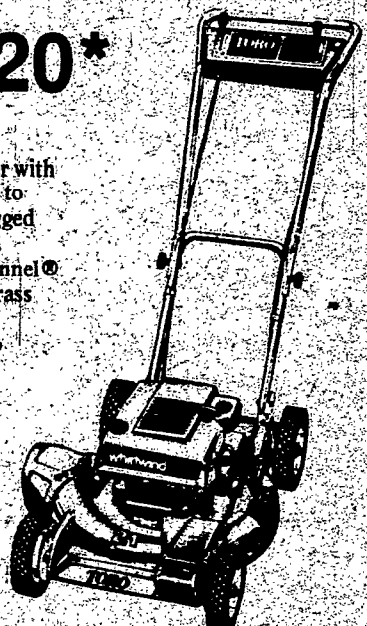


WHY BUY A '76 TORO LAWNMOWER FROM CHARLOTTE? *Here are a few reasons why:*

1. CHARLOTTE has a TORO for every budget—Large inventory
2. Model for Model and price for price you can't beat a CHARLOTTE deal on a TORO LAWN MOWER.
3. CHARLOTTE sets up every TORO at no extra charge.

Save \$20*

on a Whirlwind® mower with power drive. Built tough to last, year after year. Rugged features like: 4 cycle, 3.5hp engine; Wind-Tunnel® housing that vacuums grass up for close, even cut; anti-scalp disc; fingertip starting; and of course, front-wheel self propelling; 21" swath.



Model # 16273

Save \$30*

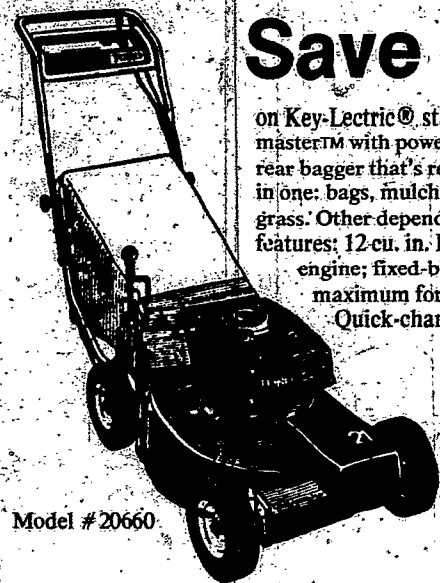
on a Guardian mower with power drive. Has 10 cu. in. High-Torque® engine for maximum cutting power, and quiet operation. Quick-Change bag empties in seconds. Scythe-action blade slices grass for an even cut. 21" swath.



Model #21610

Save \$40*

on Key-Lectric® starting Grass-master™ with power drive. The only rear bagger that's really three mowers in one: bags, mulches or disperses grass. Other dependable Toro features: 12 cu. in. High-Torque™ engine; fixed-blade-speed to retain maximum force at slower speeds; Quick-change, heavy-duty rear bag; 21" swath.



Model # 20660



All backed by TORO Factory Service

charlotte

APPLIANCES
3200 LAKE AVE.

663-5050
Free Parking