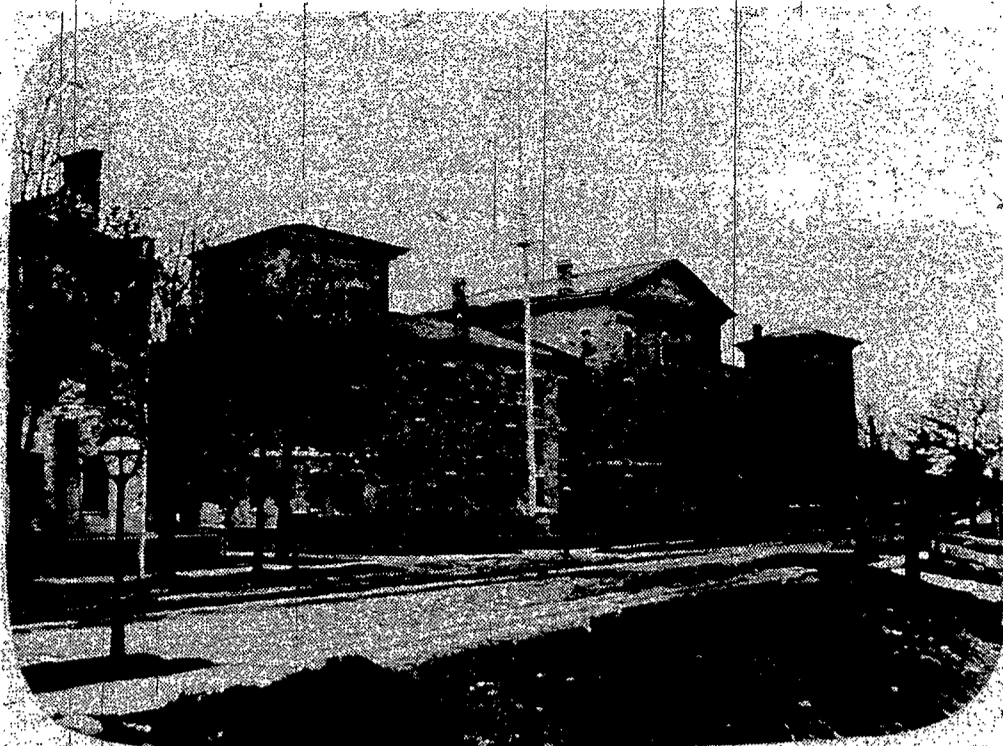


St. Elizabeth: The Rochester Connection

St. Mary's Hospital is Rochester's material connection with St. Elizabeth Ann Seton. It was opened Sept. 15, 1857, by Sisters from her Emmitsburg, Md., foundation. Their buildings were two remodeled stables on the site of the present hospital. (The first Catholic nuns in Western New York were from Mother Seton's community. They established St. Patrick's Orphanage in Rochester in 1845.)



St. Mary's Hospital in an 1865 photo. It had 14 Sisters and 1,177 patients.



Above, a very early ambulance before the hospital streamlined its service with its first motorized one, at right.



Sister Martha Daddisman, a contemporary of Mother Seton, led a contingent of Sisters from Emmitsburg, Md., to Rochester in 1845 to establish St. Patrick's orphan asylum in the Bulls Head area.



The last graduating class of nurses in 1969.

In ye fal po co

W o c w t l i