

Deaths

Sr. Martinella

A Mass in memory of Sister M. Martinella Wuest, SSND, will be celebrated at 9 a.m. Saturday, Sept. 13, in Holy Family Church.

Sister Martinella's funeral was held Sept. 1, 1975, at Notre Dame Motherhouse in Wilton, Conn. Her nephew, Father Raymond Wuest of Elmira, was a concelebrant of the Mass of Christian burial.

Sister was born in Pleystein, Bavaria, Germany, on the Feast of the Annunciation, March 25, 1884. When she was four years old her family moved to Rochester. It was from Holy Family Parish that she went to Baltimore to join the School Sisters of Notre Dame in June 1904. During the early years of her career she taught in New York City, Brooklyn, Baltimore and Newark, N.J.

In the Rochester area she taught at St. Boniface, Holy Ghost, Coldwater and Holy Family schools, chiefly in the 8th grade.

After retiring from teaching Sister was active as librarian at Holy Family School. She was well known for her art work, painting on paper, fabric and wood.

In January 1973 Sister moved to the Lourdes Health Care Center in Wilton. Even though her health

was failing, she painted things for the gift shop at the Motherhouse. She suffered a broken hip last July.

Survivors include a sister, Elizabeth Wuest; two brothers, John and Albert, and several nieces and nephews.

Bro. Victor SVD

Brother Victor Marino, designer and builder of many shrines and landmarks at St. Michael's Divine Word Seminary in Conesus, died Sept. 2, 1975 at Bordentown, N.J., where he had been recuperating from a heart condition.

He was buried last Saturday at Divine Word Seminary, Girard, Pa., the main SVD house in the Eastern Province.

Brother Victor was born Oct. 10, 1929, in Clifton, N.J. He served in the army from 1951 to 1953, then worked with his father and family in the construction trade before entering the mission society. He pronounced his vows at Conesus in August, 1957.

He stayed at Conesus until 1970 and left memorials there in the form of shrines, a picnic pavilion, a wall here and there, and many improvements inside the house. In the course of this activity, he made many friends in the vicinity. In ill health, he moved to Bordentown in 1970. He is survived by three brothers, Bartholomew, Joseph and John.

L. E. Weidner

Lloyd E. Weidner of Pittsford died Aug. 20, 1975, at the age of 82. The Mass of Christian Burial was celebrated Aug. 22 at St. Rose Church in Lima.

Mr. Weidner's survivors are two daughters, Mrs. Richard (Joyce) Rapp of Lima and Mrs. Charles (Marjorie) Murphy of Henrietta; a daughter-in-law, Mrs. Lloyd (Sunny) Weidner of Geneseo; 14 grandchildren and five great-grandchildren; four sisters, Mrs. Robert (Fanny) Cunningham, Mrs. George (Frances) Rice, Mrs. Bradford (Alice) Rice and Mrs. Robert (Maude) Spoor, and a brother, Victor A. Weidner.

Geneva Council To Dedicate Memorial

Geneva — Auxiliary Bishop John E. McCafferty will be the principal celebrant of a Mass and dedication rites for the Knights of Columbus Chaplain's Memorial at 3 p.m., Sunday, Sept. 14, at St. Mary's Cemetery.

The rites will honor the late Msgr. Edward K. Ball and Father Raymond P. Nolan. Both priests died in 1971 after more than 30 years each serving the Geneva community.

Cemetery Opens On-Site Office

Auburn — Nearly 100 years of tradition came to a close as the office of St. Joseph's Cemetery was transferred from Holy Family Rectory to the cemetery site.

Msgr. Joseph J. Sullivan, pastor of Holy Family Church, and secretary-treasurer of St. Joseph's Cemetery Corporation, recently announced that the transfer of all office records and equipment is now complete. All calls and business will be handled in the office of the cemetery clerk, Mrs. Margaret Brahney.

The clerk's office is located in the modern building situated at the northern extremity of the cemetery at the Lake Avenue junction with Lake Avenue extension. Completed in 1971, the building also houses the superintendent's office and the equipment necessary for cemetery up-keep.

Msgr. Sullivan indicated that the cemetery building was planned to include the clerk's office for the convenience of those purchasing and maintaining lots, of funeral directors and monument people.

Since the cemetery's inception in 1880 there have been more than 24,500 interments, including 326 removals from the State

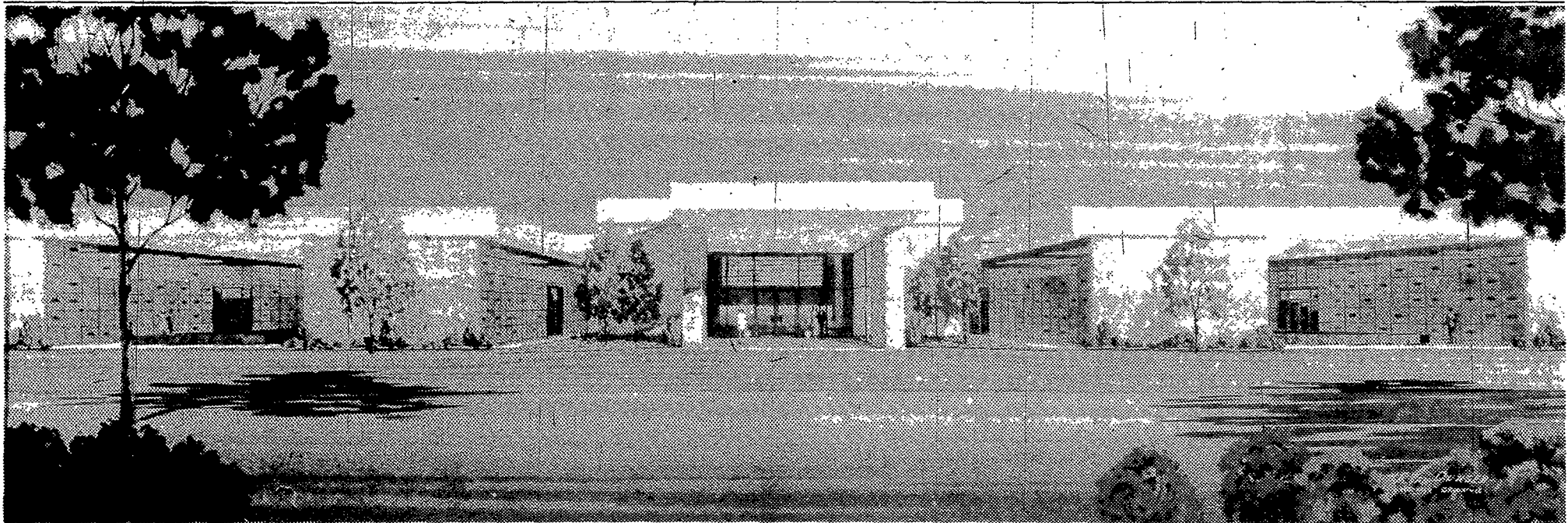
Street Cemetery and reinterment at St. Joseph's between 1880 and 1925. Burials over the past five years have averaged 300 a year.

Thoroughness of the record keeping was one of the stipulations made at the cemetery's inception and continues today. Taste and simplicity have been the usual rule and today contribute to the uniform gracefulness and peace of St. Joseph's Cemetery overlooking the shores of Owasco Lake.

Cancer Society Appointment

Mrs. Jerry Peterson has joined the American Cancer Society, Monroe County Unit as administrative assistant, according to W. Lyle Brewer, unit president.

Mrs. Peterson will have responsibilities involving all phases of the operation, which maintains and expands American Cancer Society programs including public and professional education, service and rehabilitation. She is a University of Minnesota graduate.



White Haven Chapel and Garden Mausoleum

ANYONE WHO CAN AFFORD TO BE BURIED CAN AFFORD A MAUSOLEUM CRYPT A LOOK TO THE FUTURE

Since more than 1,000 families in the Rochester area have already selected the Garden Mausoleum for their Burial Estate, it must offer a real advantage.

Consider the cost of land burial; cost of grave, opening charges, vault costs and monuments — markers, etc. It all adds up and will continue to increase with the high rate of inflation.

Mausoleum crypt costs are fixed at the time of purchase. 95% of the costs of burial are covered in one single purchase price. Inflation cannot touch it. Low monthly payments make it possible for anyone to arrange for their Memorial Estate now. It will be appreciated more and more as time goes on and costs increase.

There are no taxes, no interest, no finance charges and Perpetual care is included — forever.

Add the clean, dry, vented above ground security, plus the prestige of the Mausoleum to everything else and you have a Memorial Estate second to none.

Save by Reserving a Crypt Now — The Cost is less than a future burial

You are invited to visit the new Chapel.

Open daily and Sunday from 9 A.M. to 4:30 P.M.

We Care

... about the future of White Haven ...
... about the many families who have placed their trust in us ...

No one likes to spend more for the same things whether it be the necessities of living or a final resting place.
Would anyone turn down an opportunity to freeze 95% of their living expenses as long as they live, at today's prices?
The Garden Mausoleum provides the opportunity to freeze 95% of normal burial expenses at today's prices.
Send coupon for full details. Of course there is no obligation.

Bronze Memorials by Gorham Master Craftsmen in Silver and Bronze

CJ9/10/75

WHITE HAVEN MEMORIAL PARK
210 Marsh Road, Pittsford, N.Y. 14534

Please let me have information on Cemetery lots and Mausoleum Crypts. Of course there is no obligation.

NAME _____
ADDRESS _____
CITY _____ STATE _____ ZIP _____

