



those used for legitimate sport in target practice) confiscated? Do they want all other guns to be carefully licensed and regulated?

If they do, then they really are concerned about preservation of life. If not, they are narrow sectaries, concerned about one particular threat to life but not about life as such. Worse still, they may well be hypocrites who use their own narrow little crusade to work out emotional problems without any real concern for human life at all.

Or, to put the matter differently, there is a very considerable segment of American society (a majority) which is opposed to abortion on demand. The thoughtful Catholics in the respect life movement must realize that they need the help of these potential allies. They also must understand that the rigid fanaticism of many of their own associates has frightened off possible allies. It is necessary,

therefore, to change the image of the respect-life movement. To change the image the movement has to display broad concern about a number of critical threats to the dignity and integrity of human life.

Gun control is natural. Thousands of lives are snuffed out each year by hand guns. The bloody National Rifle Association — one of the most evil groups ever assembled — is partly to blame for such slaughter. When are the Catholic anti-abortionists going to go out after the NRA?

The exact dimensions of the world food crisis are unclear. But there isn't much doubt that hundreds of thousands, perhaps millions, could die this winter. If the anti-abortionists are sincere about respecting life, one would suppose that they will as individuals and as a movement show deep and sustained concern about the threat of world famine.

Or the respect life people

could take up the cause of industrial safety, so brilliantly described by Rachel Scott in "Muscle and Blood." Over 100,000 people die each year from occupational caused diseases and perhaps 400,000 disabling diseases occur each year. Lead and beryllium poisoning, black lung, asbestos poisoning — can you respect life and not be concerned about these things?

Industrial disease is a subject on which the respect life movement could steal a march on most of the ecological enthusiasts who are greatly concerned about whales, birds and timber wolves (about which we should be concerned) but don't seem much worried about coal miners or asbestos workers. Of course, most of the eco-freaks are upper middle class types who much prefer whales and wolves to the racist, hawkish, white ethnic, blue-collar workers.

A coalition against abortion

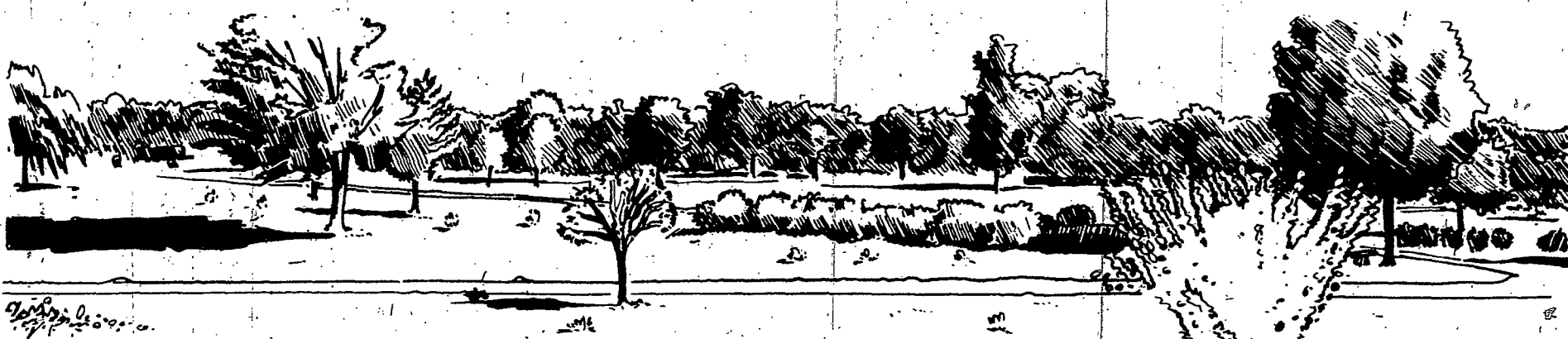
and for industrial safety would be obvious if the respect life people are really interested in winning allies. Still, some of them seem perfectly capable of worrying about the worker's unborn child and simultaneously not caring much about the toxic materials that are inhaled into the worker's lungs every day — making it more likely that he won't live to support the child.

I am, let it be clear, against abortion; I am also against the righteous and politically inept fanatics who think that rectitude dispenses one from the necessity of building a coalition with potential allies. And I am against sick sectaries who think you can be deeply worried about human life and ignore many of the other threats to it besides abortion.

And if our church leaders were smart, they would disengage themselves from the sectaries and form a broad coalition with all those who are involved in protecting and defending human life.

White Haven Memorial Park

210 MARSH ROAD PITTSFORD, N.Y. 14534



When should you choose your family burial place?

SOME HAVE ASKED THEMSELVES THIS QUESTION; SOME HAVE NEVER THOUGHT ABOUT IT. ALL WILL HAVE TO ANSWER IT SOMETIME. JUST AS DEATH IS INEVITABLE SO IS THE NEED FOR BURIAL FACILITIES. IF YOU SHOULD FIND IT DIFFICULT TO CONSIDER THIS MATTER NOW, THINK HOW DIFFICULT IT WILL BE ON A DAY WHEN THE DECISION CAN NO LONGER BE POSTPONED.

- 1. CHOOSING A FAMILY BURIAL PLACE IS INEVITABLE.** It can be done when there is a death — a time of sorrow and confusion — or it can be done NOW, thoughtfully and at your own convenience.
- 2. SOMEONE MUST DO IT.** Unless it is a planned decision now, your family may have to depend on the judgment of a friend, or even a stranger, to select in haste and hope he will not disappoint those who will be the most frequent visitors.
- 3. DEATH IS A TIME OF STRESS.** Many things must be done quickly with little time to think them through. Selecting your burial place is one of the few that can be done in advance to relieve future strain.
- 4. DEATH IS A TIME OF EXPENSE** — a strain on finances often needed for family re-adjustment. Selecting now can relieve a financial problem later when such problems are a real burden.
- 5. WHAT DO YOU WISH TO PAY?** You can decide that easily now — not so easily later. Whoever makes the decision at time of death is likely to be guided by emotion rather than prudence.
- 6. HOW DO YOU WISH TO PAY?** You can purchase it as you please — in one payment or over a period of time, without interest or finance charges.
- 7. WHAT YOU DON'T CHOOSE NOW WILL NEVER COST YOU LESS.** If history is any teacher, the same selection later will be more expensive and the same expense later may require considerably further to travel to newly developed outlying locations.
- 8. YOUR FAMILY BURIAL PLACE WILL BE VISITED OFTEN.** It can be a place of peace and prayer suited to your family's tastes. If you want it to be that, it may be hard to achieve at the time of death, when the weather and the season can make judgement difficult.
- 9. DO YOU CARE WHERE YOU ARE BURIED?** If you don't, someone very likely does, and that someone must decide in haste without your help. Experience shows that it is usually the woman rather than the man who must do it.
- 10. WILL YOU WANT . . . REGULAR OR MAUSOLEUM BURIAL.** Since the cost is about the same this is a decision that can be made now and avoid the confusion surrounding a death.

To help you plan your family burial needs and to assist you when death occurs we have a booklet "Let's Face It Now" which can be used as a guide to the many things to be done at the time of death. It explains how to speed up life insurance settlements. How to avoid losing Social Security, Veterans and other benefits. Why it's so important that all the detailed information your family will need is available to them when they need it.

WHITE HAVEN MEMORIAL PARK
210 Marsh Road, Pittsford, N.Y. 14534

Please let me have information on Cemetery lots Mausoleum Crypts and a FREE copy of the booklet "Let's Face It Now"

NAME _____
ADDRESS _____
CITY _____ STATE _____ ZIP _____

We Care

... about the future of White Haven ...
about the many families who have placed their trust in us ...

