

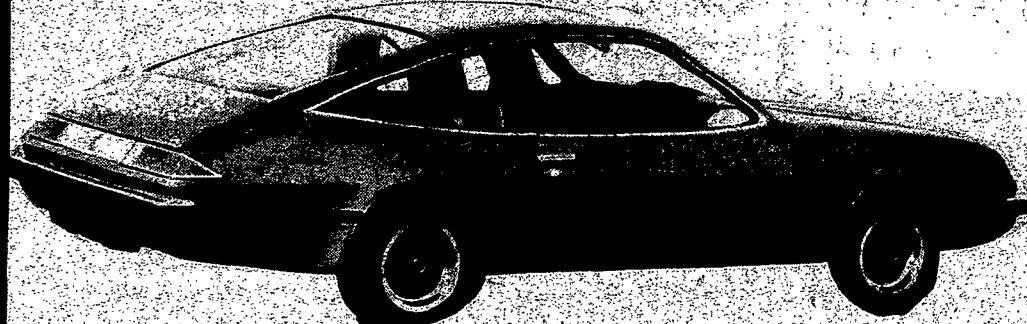


You'll S-t-r-e-t-c-h Your Dollars at Philanz Oldsmobile's

# Dollar Days

NEW '75's NOW IN OUR SHOWROOM  
BUY A '75 at a '74 PRICE!

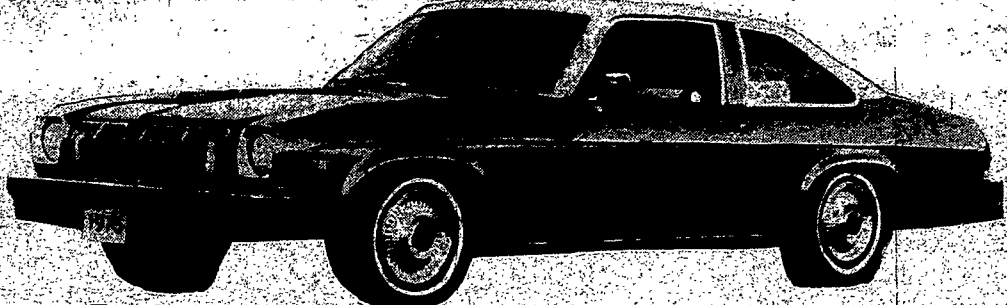
## DOLLAR DAYS



### '75 STARFIRE SUPERCOUPE

A delicate balance of guts and gas economy. Gas economy, you know about. It comes in many shades of gray. But guts are different. They're there, or not--no in-between. That's why Starfire has a new 3.8-liter V-6. Fully-synched, short-throw 4-speed gearbox, and a console. A high-rise tunnel between the seats that gives the driveline a chance to go straight. A new torque arm rear suspension that handles drive forces--and roads--with authority. GM-spec steel belted radial tires. 97" wheel base. Add looks and luxuries to all that, and it's a good feeling to have a true Supercoupe around you.

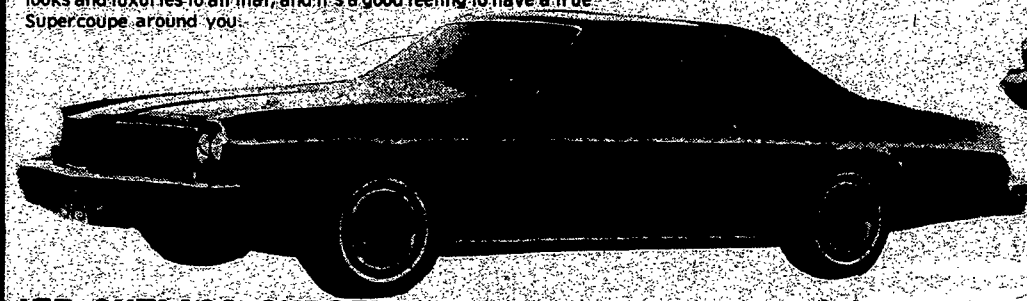
\$4156



### '75 OMEGA COUPE

Omega Standard Equipment: Full-foam seats. Cut-pile carpeting. Armrest, front and rear. Fold-down 2nd seat. Hatchback. GM-specification steel-belted radial-ply tires. Front disc brakes. Swingaway grille. Hydraulic bumper system. High-energy ignition system. Reduced maintenance schedule. Catalytic converter. Long-life exhaust pipe. Double panel steel roof. Cigar lighter. And more.

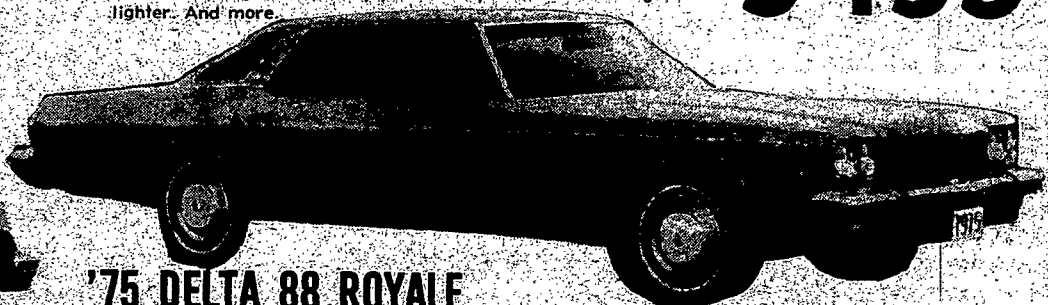
\$3435



### '75 CUTLASS SUPREME

Cutlass Supreme Standard Equipment: Power steering. Front disc brakes. Deluxe steering wheel. Hood ornament. French-Walnut wood-grained applique trim. Interior-operated hood release. Message center. Front ashtray and glove box lights. Courtesy lamp. GM-specification steel-belted radial-ply tires. Chrome wheel discs. High-energy ignition system. Reduced maintenance schedule. Catalytic converter. Long-life exhaust and cross-over pipes. Double panel steel roof. Cigar lighter. And more.

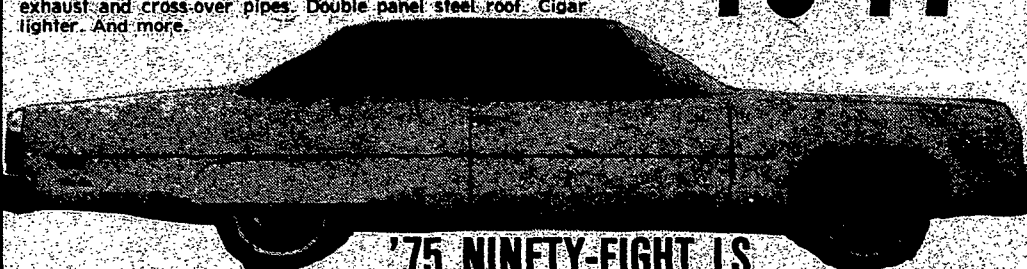
\$4047



### '75 DELTA 88 ROYALE

Delta 88 Royale Standard Equipment: Full-foam seats. Power steering. Power brakes, discs in front. Deluxe steering wheel. Message center. French-Walnut wood-grained applique trim. Interior-operated hood release. Front ashtray and glove box lights. Courtesy lamp. GM-specification steel-belted radial-ply tires. Chrome wheel discs. High-energy ignition system. Reduced maintenance schedule. Catalytic converter. Bumper impact strips, front and rear. Hydraulic bumper system. Swingaway grille. And more.

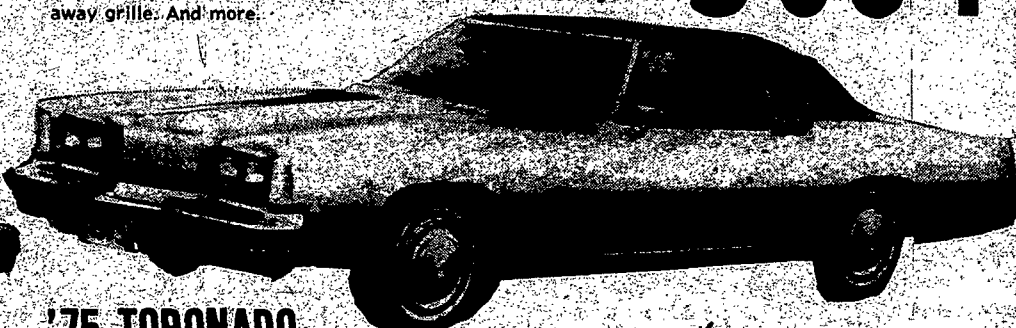
\$5064



### '75 NINETY-EIGHT LS

Ninety-eight LS Standard Equipment: Full-foam seats. Armrests with power controls. Power windows. Power steering. Power brakes, discs in front. Remote control driver's mirror. Power driver's seat. Rectangular headlamps. Interior-operated hood release. Message center. Front ashtray and glove box lights. Courtesy and map lamps. GM-specification steel-belted radial-ply tires. High-energy ignition system. Reduced maintenance schedule. Catalytic converter. Swingaway grille. Flo-Thru Ventilation. And more.

\$5963



### '75 TORONADO

Toronado Standard Equipment: Full-foam seats. Armrests with power controls. Power windows. Power steering. Power brakes, discs in front. Remote control driver's mirror. Interior-operated hood release. Message center. Front ashtray and glove box lights. Courtesy and map lamps. GM-specification steel-belted radial-ply tires. Digital clock. High-energy ignition system. Reduced maintenance schedule. Catalytic converter. Bright metal brake and accelerator pedal accents. And more.

\$6536

# PHILANZ

OLDSMOBILE INC.

960 East Ridge Rd. 266-2900

(Carter St., off Keeler Expy-Route 104)



Open: Mon., Tue., & Thurs. Nites 'til 9, Wed., Fri., Sat. 'til 6

Open Wed., Thurs., Fri. 'til 9 P.M.

PHILANZ OLDSMOBILE . . . WHERE YOUR DOLLARS LOOK BIGGER!