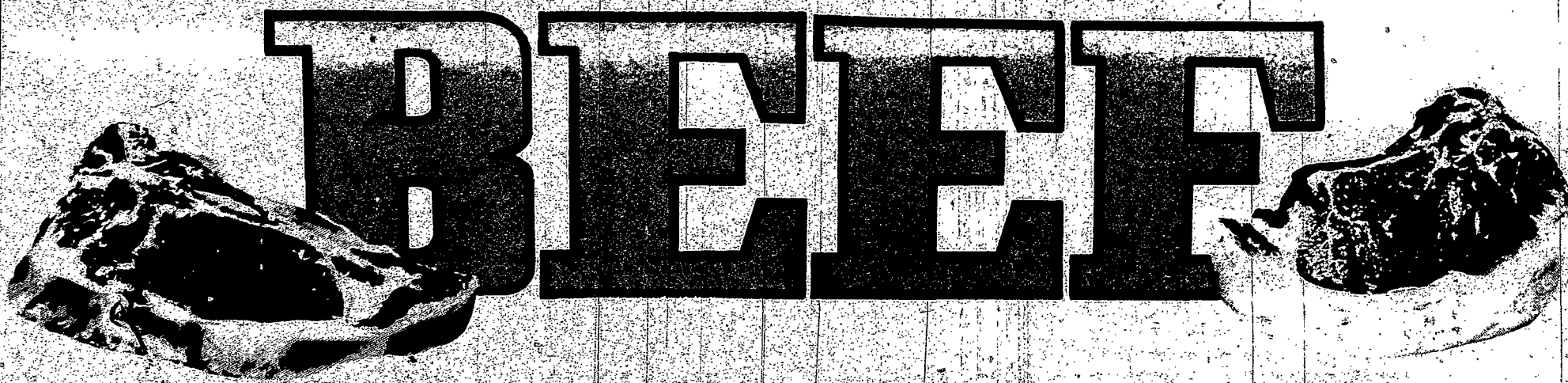


OPEN TODAY! CALL 671-6550



PRICES CUT-CUT!

BUY BY THE BUNDLE AND SAVE!

BUNDLE NO. 1 RIB & CHUCK
 Consisting of:
 • CLUB STEAK
 • SWISS STEAK
 • DELMONICO STEAKS
 • CHUCK STEAKS
 • POT ROASTS
 • RIB ROASTS
 • RIB STEAKS
 • BAR-B-QUE RIBS
 • GROUND CHUCK
 EXAMPLE: 118 lbs. @ 76c/lb. TOTAL \$89.00
 WTS. FROM 118-220 lbs.
 USDA CHOICE
 Yield 5

BUNDLE NO. 2 LOIN & ROUND
 Consisting of:
 • T-BONE STEAKS
 • ROUND STEAKS
 • PORTERHOUSE STEAKS
 • SIRLOIN STEAKS
 • RUMP ROAST
 • EYE ROUND ROAST
 • FLANK STEAKS
 • SIRLOIN TIP ROAST
 • TOP & BOTTOM RD. ROASTS
 • GROUND ROUND
 EXAMPLE: 100 lbs. @ 89c/lb. TOTAL \$89.00. WTS. FROM 100-250 lbs.
 USDA CHOICE
 Yield 5

2 BUNDLES TO CHOOSE FROM
2050
 PER PAYMENT FOR 4 PAYMENTS
 NO INTEREST OR OTHER CHARGES ADDED

USDA CHOICE

OPEN DAILY 9 to 9 SAT. and SUN. 9 AM. to 6 P.M. Closed Tuesday

4 \$ BONUS BUYS
 WITH PURCHASE OF BEEF SIDE CHOICE OF 2 WITH QUARTER OF BEEF

10 lbs. TURKEY \$1

5 lbs. SPARE RIBS \$1

5 lbs. PORK CHOPS \$1

FOR THOSE WHO WANT THE VERY BEST MONEY CAN BUY!

USDA PRIME RIB **\$22.31**

Includes: RIB STEAKS, CLUB STEAKS, DELMONICO STEAKS, OVEN & POT ROASTS, B-B-Q RIBS & GROUND BEEF

EXAMPLE: 75 lbs. @ 1.19/lb. TOTAL \$89.25 WTS. VARY 75-150 lbs.

90 DAYS—SAME AS CASH

NO CARRYING OR INTEREST CHARGES ADDED! LONGER CREDIT TERMS ALSO AVAILABLE

FREE! CUTTING AND DOUBLE WRAPPING FOR YOUR FREEZER!

4 \$ BONUS BUYS
 WITH PURCHASE OF BEEF SIDE CHOICE OF 2 WITH QUARTER OF BEEF

5 lbs. HAM \$1

5 lbs. BACON \$1

5 lbs. HOT DOGS \$1

ALL MEAT CUT BY APPOINTMENT ALL BEEF SOLD HANGING WEIGHT SUBJECT TO CUTTING & TRIM LOSS (TRIM LOSS VARIES 10-40%)

GUARANTEED TO SATISFY If not satisfied with flavor and tenderness, your order will be replaced or money refunded within 10 days.

MR. BEEF 2002 EMPIRE BLVD. Opposite Eastway Plaza

CALL NOW FOR

U.S.D.A. CHOICE & PRIME BEEF ORDERS **99¢ to \$1.99/lb.**