

# COURIER-JOURNAL

NEWSPAPER OF THE DIOCESE OF ROCHESTER

Two Sections

36 Pages

Wednesday, June 12, 1974

Fifteen Cents



## Unusual Setting

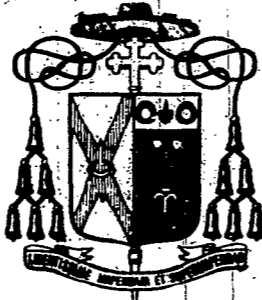
Members of the Priests Council adopted a more relaxed posture than is usual for their meetings as they convened outdoors last week at Bishop Joseph L. Hogan's residence in Victor for their final meeting before Summer recess.



Photos by Susan McKinley

Above left, Father James J. Marvin, council president, gestures to make a point. At right, Father Thomas F. Brennan of St. Mary's Corning and Bishop Hogan take notes. For report on the meeting and other photo page 2.

## Diocesan Appointments



## New Pastors Named

### REGIONAL COORDINATOR

**Father Thomas Burr**, associate pastor of St. Ambrose, to be coordinator of Northeast Region.

### PASTORS

**Father Anthony Valente**, to co-pastor, St. Michael's, Rochester, from associate pastor, St. Mary's, Auburn.

**Father Paul Freemesser**, to co-pastor, St. Michael's, Rochester, from associate pastor, St. Francis Xavier, Rochester.

**Father Valentine Jankowiak**, to pastor, St. Cecilia's, Elmira, from pastor, St. Margaret Mary's, Apalachin.

**Father Elmer Schmidt**, to pastor, St. Margaret Mary's, Apalachin, from associate pastor, St. Vincent's, Corning.

**Father John Whalen**, to pastor, St. Patrick, Mt. Morris, from pastor, Our Lady of Mercy, Greece.

### ASSOCIATE PASTORS

**Father Philip J. Billotte**, to Holy Family, Rochester, from Sacred Heart, Auburn.

**Father James C. Burke**, to Annunciation, Rochester, from Nativity of the Blessed Virgin Mary, Brockport.

**Father Eugene Emo**, to St. Michael, Newark, from St. Margaret Mary, Apalachin.

**Father William G. Endres**, to Sacred Heart Cathedral, Rochester, from St. Stephen, Geneva.

**Father Ralph Fraats**, to St. Lawrence, Greece, from St. Patrick, Seneca Falls.

**Father David Gramkee**, to St. Mary, Auburn, from Our Lady of Lourdes, Rochester.

Continued on Page 2

A pastoral team will take over St. Michael's, Rochester, when Father Benedict Ehmann steps down at the end of June. The appointment of Fathers Anthony Valente and Paul Freemesser was announced this week by the Pastoral Office.

Father Ehmann, a priest for 45 years, will retire to devote his time to the Spanish Apostolate and other interests.

St. Cecilia's parish in Elmira, which has been managed from neighboring Ss. Peter and Paul since the Fall of 1972, again will have its own pastor — Father Valentine Jankowiak, now of Apalachin.

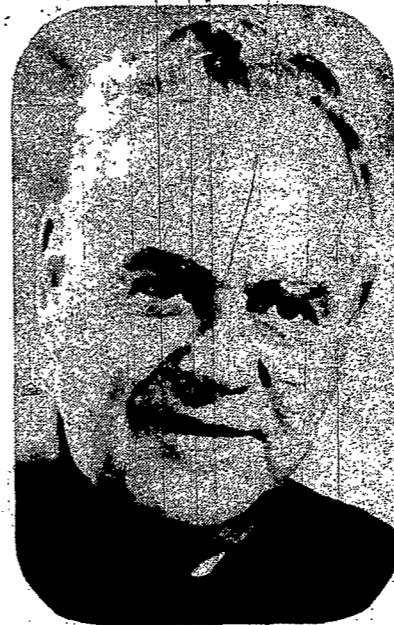
Replacing Father Jankowiak at St. Margaret Mary's will be Father Elmer Schmidt, associate pastor of St. Vincent's Corning.

Father John Whalen, who has been pastor at Our Lady of Mercy, Greece for 15 years, almost since the beginning of the parish, will move to St. Patrick's, Mt. Morris. He will take the place of Father Robert Kanka, who has asked to be assigned as an associate pastor, the announcement said.

These assignments are effective June 26. The posting of associate pastors will be announced next week, but it may be several weeks before Father Whalen's successor at Mercy is chosen, the Pastoral Office said.

Father Ehmann's successors at the North Clinton Avenue parish, both from the St. Bernard's class of 1959, were chosen in part for their facility in languages. Father Valente, former chaplain at

Continued on Page 2



FATHER WHALEN



FATHER SCHMIDT



FATHERS VALENTE AND FREEMESSER

## Fr. Burr Named NE Coordinator

Father Thomas Burr, associate pastor of St. Ambrose, has been named the new Northeast Region coordinator, according to the Pastoral Office.

Father Burr will replace Father Frederick Bush, pastor at Holy Spirit, Penfield, and regional coordinator since regionalism began in February, 1972.

A native of Corning, Father Burr attended St. Andrew's and

St. Bernard's Seminaries and was ordained in 1961.

His first assignment was an associate pastor at St. Boniface. In 1964 he became an instructor in Latin and music at St. Andrew's Seminary. In subsequent years he served at St. Rita's and St. Andrew's and in 1971 he came to St. Ambrose.

The Northeast Region numbers 14 parishes and Mercy High School.



FATHER BURR