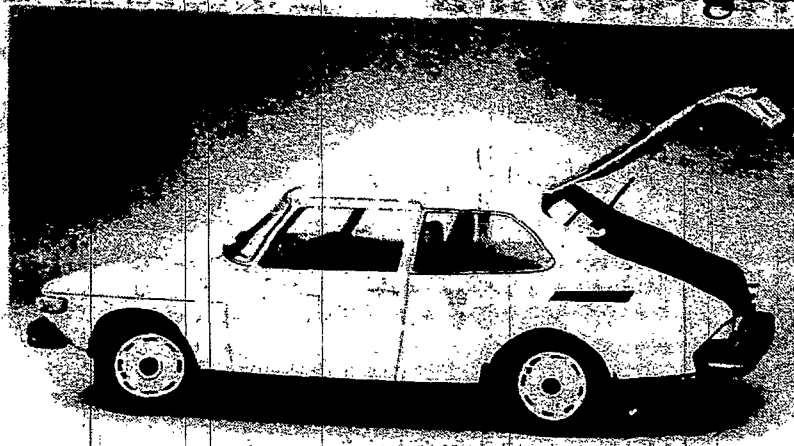


A Sedan When You Want It - A Wagon When You Need It

The new Saab 99 Wagon-Back Sedan is really two cars in one: A regular sedan with plenty of room for both passengers and luggage, when you need that; and a wagon with a 53 cubic feet loading space, with the rear seat folded down and the removable parcel shelf out of the way.

Saab officials feel that it incorporates the best of both models: The aerodynamics and looks of a fastback sedan; and the load-carrying ability of a wagon. The Saab 99 Wagon-Back Sedan is powered by a 110 hp (Net SAE) four-cylinder overhead camshaft



engine, and incorporates such well-known Saab features as front-wheel drive; roll-over

construction; four-wheel disc brakes and even an electrically heated driver's seat.

Canadian Transport Authority Offers . . .

Tips on Safe Trailering

HELP!!!

If you are an experienced trailer hand, you might want to turn the page. But if you're one of the growing army of motorists who's going to haul a trailer for the first time this summer, these tips from the Ontario Ministry of Transport can help make the experience a more pleasant one.

Whether you'll be pulling a sleek, 35-footer from coast to coast or hauling some furniture to the cottage in a rented two-wheeled trailer, certain driving techniques are recommended.

STARTING: Accelerate carefully. Take it slowly and easily.

TAKING CURVES: Stay close to the middle of your lane.

TURNING —
Right Turn: Look in your right mirror. Signal, slow down. If turn is sharp, move ahead until car's front wheels are well ahead of curb, then turn to the right.

Left Turn: Check traffic. Signal. Proceed slowly. When you make your turn, drive well into intersection in order to swing wide, to allow for the trailer.

SLOWING, STOPPING: A sudden stop can jackknife your trailer or shift your load, so keep a greater distance than normally between you and the car ahead. Keep out of the fast lanes and maintain a speed that makes sudden stops and slow-ups unnecessary.

PASSING: When towing a trailer you can't accelerate as fast as without it. Then too your car plus trailer is much longer. Before you pass, make sure there's enough time and room. When you have passed, allow more room before you move back to your lane. Don't cut in and swerve — this can make your trailer swing and sway.

BEING PASSED: Help other drivers pass you where necessary. If you're holding up a line of traffic, the right thing to do is signal, pull off, and let them pass.

If a large bus or transport passes you, air pressure may push the rear of your trailer to the right. Almost instantly, this pressure will push the front of your trailer. Be prepared to steer out of this situation. Accelerating a bit may help. Braking will not.

BACKING: Back very slowly. Turn wheel slightly, then straighten. Steer by a series of slight turns.

Backing to right: Turn front wheels of car to left. Front end of trailer will go left; rear end will go right.

If your car should break down on a busy highway, the Ontario Traffic Safety ministry suggests you take the following actions to summon help and create the least possible hazard to yourself and other motorists:

- Pull completely off the road onto the shoulder.

- Use your four-way emergency flashers.

- Lift up the hood of your car and tie a white handkerchief to the radio antenna or door handle.

- Use flares if you have them.

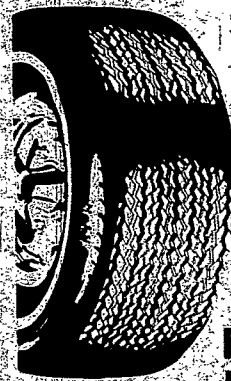
COLOSSAL SAVINGS
 If every motorist in the U.S. saved two gallons of gas a week, total yearly savings for the nation would exceed one billion gallons.

William R. Stonewall

STONE RIDGE NO. 1 3162 Latta Rd. 225-9790
 STONE RIDGE NO. 2 1090 Long Pond Rd. (corn. Maiden Lane) 225-9851

Mobil

COMPLETE AUTO REPAIR CENTER
 We are a full service Mobil Dealer
 Licensed N.Y.S. Inspection Station



STEEL RADIAL TIRES
 Wide 70 Series

G-70-14	\$55.00
G-70-15	\$55.00
H-70-14	\$57.00
H-70-15	\$57.00

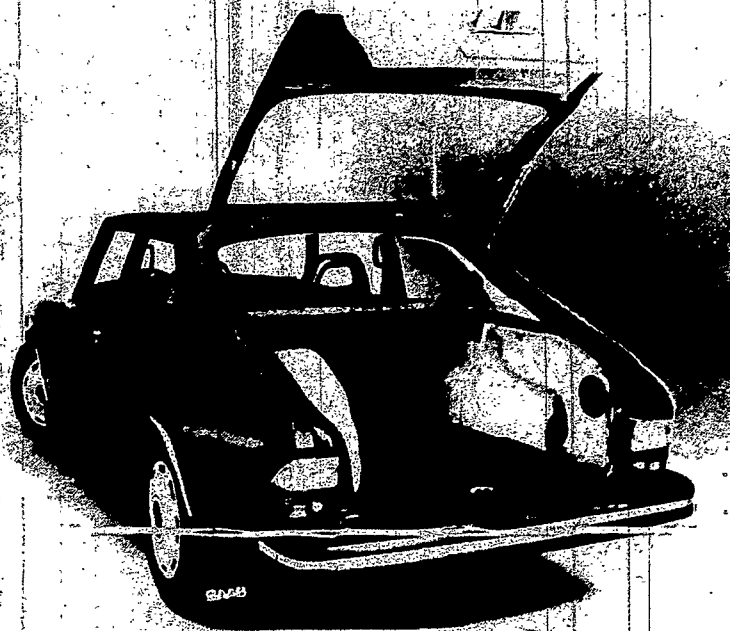
PRICES INCLUDE MOUNTING
 BALANCING & FEDERAL TAX

SPECIAL
10% DISCOUNT

To All Senior Citizens On All Garage Work.

What's economical with luxurious accommodations for 5 adults and the versatility of a station wagon?

PRESENTING
THE
NEW



Saab WagonBack Sedan

With All These Standard Features

- FRONT WHEEL DRIVE
- FUEL INJECTED OVERHEAD CAM ENGINE
- STEEL BELTED RADIALS
- FOUR WHEEL POWER DISC BRAKES
- RACK & PINION STEERING
- 53 CUBIC FEET OF CARRYING CAPACITY

"Saab, it's what a car should be"

SEE IT NOW

RALPH PONTIAC & IMPORTS

685 W. MAIN ST. 235-3635

OPEN Mon Tues Wed & Thurs 9:00 A.M. to 9:00 P.M. Fri. & Sat. 9:00 A.M. to 6:00 P.M.