

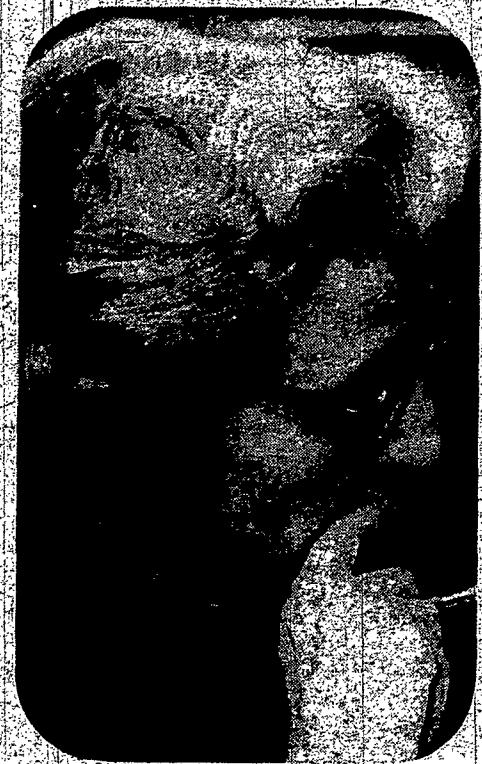
Sister Gratia L'Esperance, RSM, speaks to the council on the Church's responsibility in medical ethics.



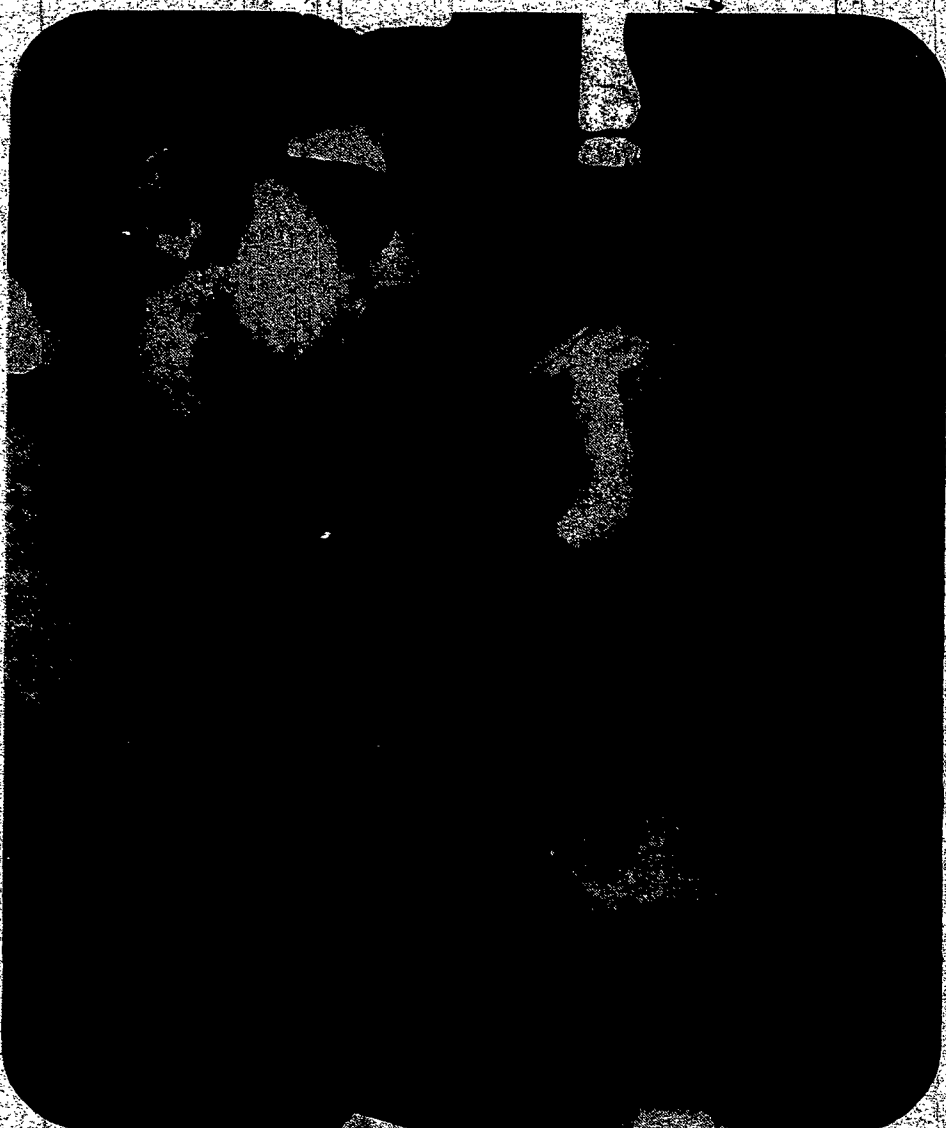
Sister Margaret Tuley, DC, [left]



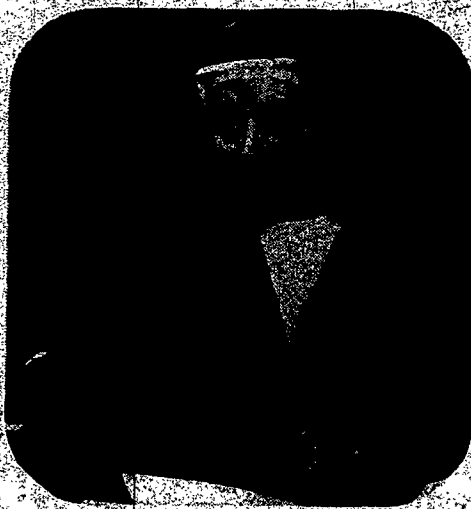
Sister Louise Weber, SSJ, president, Sister Mary Beatrice Curran, RSM, vice president.



Sister Louise



Father Douglas Hoffman reports on the long range ministerial needs committee.



Sister Margaret



Sister Alice McLaughlin, SSJ.



Sister Bonaventure, RSM, [left] Sister Judith Weber, SSND, treasurer and corresponding secretary.

The Co

Text by Photos I

According to the Diocesan Sisters Council, which women rely on for policy making that affect their lives — in — on local, regional

And that's just w Sisters since their fir present, there are 31

In addition to cor revision in their const by the diocese to be re

Regional election Sister within that reg nominated for that pe there are over 150 Si

Congregational re to the size of the con order in the diocese congregational repres

Sister Mary Jo