

as Weathered the Storms

nine-story building to house both the students and the Sisters. In the following year a new medical unit was opened. The hospital could accommodate 245 patients and offered the best in building and equipment available.

In May of 1929, Sister Rose Alice died, and was succeeded by Sister Rose Miriam Smyth; but, three months later, Sister Rose Miriam was elected to head the congregation and was succeeded in the hospital duties by Sister M. Valerian O'Hare.

In 1942, Sister Margaret Adelaide Owen was appointed administrator, a post she held until the end of last month.

Sister Martha Gersbach, who had been associate administrator, succeeded Sister Margaret Adelaide.

In May, 1946, disaster struck: a flood. And shortly after, a twister. The community rallied to help the hospital and services were quickly restored.

In 1958, the hospital opened an intensive care unit and in 1960 a new two-story addition to the hospital was completed. In 1963 a new laboratory was opened; and in the following year a new emergency room, and obstetrics ward. A coronary care unit was opened in 1968.

In May 1972, the Hospital dedicated a rehabilitation pavilion and held open house. Little more than a month later history repeated itself when the great flood of June struck.

Half of the city was evacuated. Power to the hospital was cut off, the boiler room was under 20 feet of water, and the river continued to rise.

But, thanks to the efforts of hundreds of individuals, of state and federal agencies, to the uncountable volunteers who poured into the area to help clean up, the hospital and the community are again functioning well.



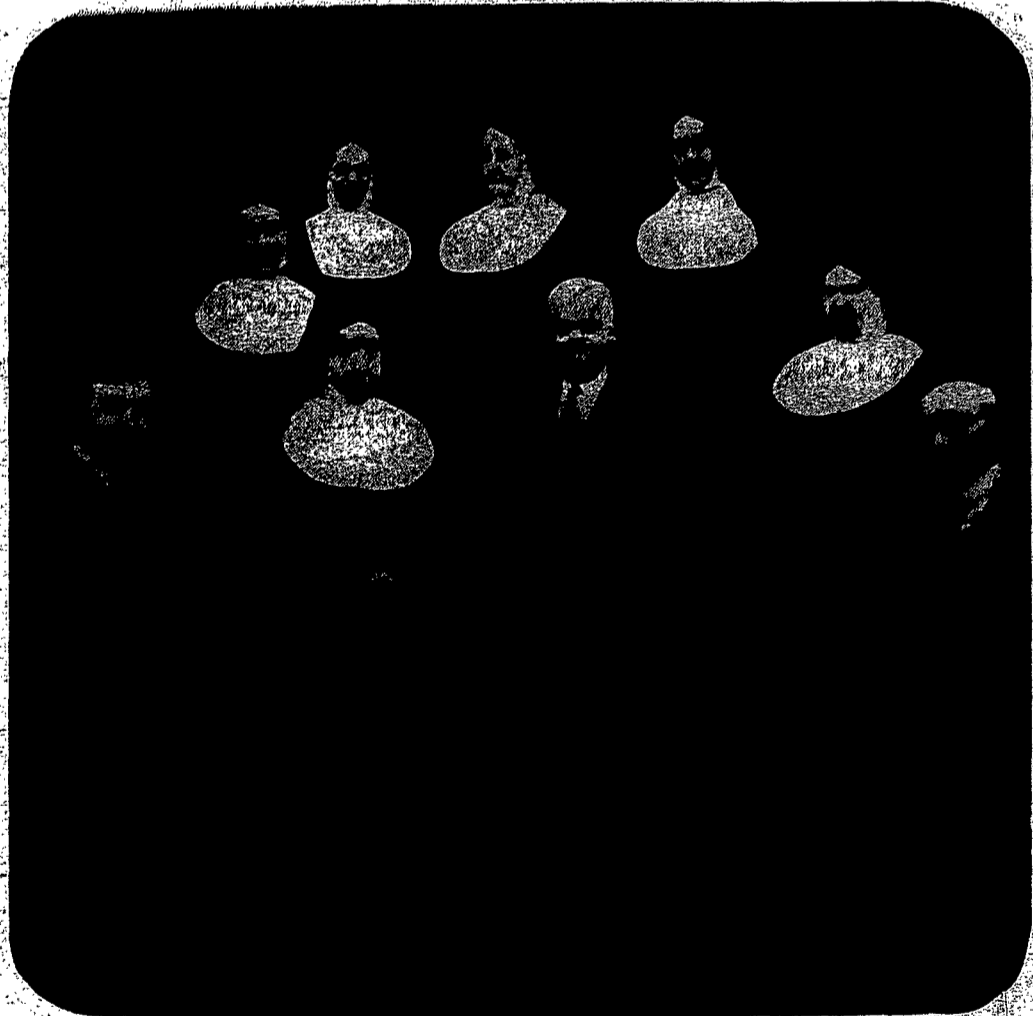
At right is the newest addition to the hospital, the John E. Sullivan Rehabilitation Pavilion on East Market Street.



...rsing are shown in the operating room in ... Miss Josephine Tyrasinski, Miss Margaret ... and supervisor of operating room, Miss ... d Miss Lena MacInemey.



Dr. Daniel P. Murphy, founder of St. Joseph's School of Nursing



Second from left in front row is Sister Rose Alice, founder of the hospital.