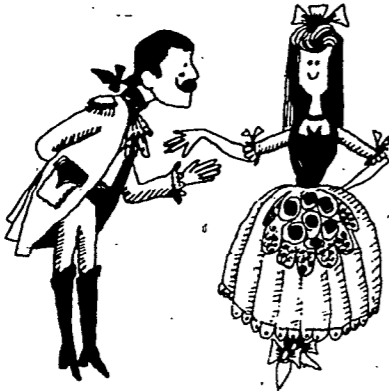


KEEPING TABS

The Catholic Mission Guild meets at 1 p.m. today at 513 Monroe Ave.



The Southwest Golden Age Group will get together at 34 Monica St. at 1:30 p.m. Friday, Sept. 14, for music, dancing and refreshments. Newcomers are welcome.

St. Josaphat parish at 940 East Ridge Rd. will put on a Ukrainian arts and crafts festival this weekend, Sept. 15 and 16, from 1 until 10:30 p.m. There will be rides and games, a bazaar and demonstrations of folk dancing, Easter egg painting, weaving and other crafts.

Rochester alumnae of the College of St. Rose will meet at 8:30 p.m. Thursday, Sept. 20 at the home of Mrs. Kevin McNiff, 281 Yarmouth Rd.

The Rosary Guild of St. Pius X parish will hold its annual banquet Tuesday evening, Sept. 18, at the Party House. Sister Kathleen Burns of Corpus Christi Church will be guest speaker. Reservations should be made with Mrs. Mary Ellen McCollum or Mrs. Ethel Freitas.

The Greater Rochester Mothers of Twins Club, which says of itself that "God chooses the members," invites newcomers to a tureen dinner at 8 p.m. Thursday, Sept. 20, at 360 Maiden Lane. The club meets there on the third Thursday of each month. Further information may be obtained from Mrs. David DeCray at 458-4348.

The Day Care Training Center for Handicapped Children is seeking volunteers to help in classrooms and in the recreation program. Anyone interested should make an appointment with Miss Adkins through 442-4100, extension 210. The school is located in the Al Sigl Center, 1000 Elmwood Ave.

Court Our Lady of the Cenacle, CDA, will introduce a seven-point involvement plan Sept. 18 with a discussion of public relations. The meeting will begin at 8 in St. Philip Neri school hall, following a tureen supper.

The annual card party given by St. Ann's Auxiliary for the benefit of residents of St. Ann's Home and The Heritage, will be held Thursday, Sept. 20 at the home, 1500 Portland, in two sessions — at 1 p.m. and 8 p.m. Tickets: \$1.25.

Msgr. Randall Named Knight of Holy Sepulchre

Msgr. John S. Randall, former managing editor of the Courier-Journal, who is now assistant national secretary of the Catholic Near East Welfare Association, has been named a Knight of the Holy Sepulchre.

On Saturday, Sept. 15, a solemn investiture ceremony will take place in St. Patrick's Cathedral, New York City. The Holy Sacrifice of the Mass will be offered at the High Altar by Terence Cardinal Cooke, grand prior of the Eastern Lieutenancy.

After Mass, brunch will be served for the knights and ladies in the Grand Ballroom of the Waldorf-Astoria Hotel, New York City.

Good Laundry Care Means Good Laundry Procedures

Admittedly, doing the laundry isn't the most exciting job in the world, but getting good results gives a special satisfaction that makes the whole job seem worthwhile.

On the other hand, not having your wash look as nice as you think it should is a very frustrating experience.

One of the reasons you may not be following all the procedures of good laundry care. Before the statewide ban on phosphate detergents went into effect, it didn't seem as necessary to follow all the procedures to have our laundry come out looking as we think it should. However, since we have been limited in the laundry products we can use, the results of not following all the proper laundry procedures are all too evident. Procedures like sorting the clothes by color and amount of soil and using the warmest wash water considered safe for the fabric.

To be prepared for the problems that would result from the ban on phosphate detergents, the Home Service Department of RG&E spent a great deal of time, before the ban, testing three types of laundry products — a soap, a phosphate detergent, and a non-phosphate detergent. The soaps were tested in two different washing machines: One using a mechanical water softener and one without one.

Some new problems were noticed: Unusual streaks in fabrics, strange rust-colored stains, harshness, excessive linting. In addition, conversations with our customers brought other problems to our attention: Overall grey, grey-black stains, and even the imprinting of the washer holes in the fabric.

Results of tests at Consumer Information Center

Our Home Service Representatives would like to share with you the results of these tests. They will be staffing the Consumer Information Center Monday, September 10 through September 28 every Monday through Friday from 11 a.m. to 3 p.m. with this information.



We have photographs showing how some clothes faded in the tests when they were laundered by the four different methods.

You can also see some of the actual clothes used in the tests. By looking at them and feeling the fabric, you'll see that some methods of laundering resulted in harsher fabrics, some streaking, and fading. All the clothes are labeled so that you can see for yourself which method brought about which result.

As part of the testing, our Appliance Service Department also looked at the effect of the different laundry products on the washing machine themselves. You'll be able to see the parts of one of the machines. You can see the

build-up of residue that occurred on this machine. This might happen with your machine, depending on what laundry product you use. Our Home Service Representative can tell you how to clean up this accumulation.

Mechanical water softener important laundry aid

One of the conclusions we came to in our testing is that in an area where hard water is prevalent the installation of a mechanical water softener would be a great help in producing the best laundry results. You get the same results you did with a phosphate detergent, since the function of a phosphate in detergents is to act as a water softener.

However, if you haven't installed one and if you do not plan to do so, your adherence to good laundry procedures is a must in producing the best possible results.

Which laundry product do I use?



The kind of water you use, its hardness, and what kind of laundry you have to do, heavily or lightly soiled, affects how you should do your laundry. Although we cannot decide for you what laundry product to use, we will give you the information you need to know so you can make your own decision.

Consumer Center during Downtown Days

While you unlock the secret to good laundry care at our Consumer Information Center make sure you try to unlock RG&E's Treasure Chest during Downtown Days, Monday through Friday, Tuesday and Thursday to 9, and Saturday until 12 noon. Many valuable prizes will be awarded daily. If your key doesn't fit the lock, you will become eligible for a Second Chance Drawing. All prizes will be awarded. RG&E employees and their immediate family are not eligible to participate in the drawings at RG&E, although they are welcome to participate in the rest of the Downtown Days' prize drawings.

RG&E AND **ROCHESTER GAS AND ELECTRIC**
89 EAST AVENUE, ROCHESTER, N. Y. 14649 • 546-2700