

Cancer Society Gives \$94,493 Here

The Fight Against Cancer Continues

By PAT PETRASKE

Words like eukaryotic, carcinogenic, lethal mutants all sound like terms cast out from another world, an unfamiliar world of test tubes and microscopes. A more familiar world is experienced by hundreds of families a year who must face the news that cancer has taken one of their members.

But the race continues to find some answer to this enigma basically thought of as an abnormal growth of cells that eventually spread. One step is being taken by a recent addition to the University of Rochester staff, Dr. Betsy Ohlsson-Wilhelm, who will administer a grant of \$94,493 from the American Cancer Society.

Her grant, effective July 1, 1973 through June 30, 1975 will cover equipment and other costs of her program entitled "Somatic Cell Genetics: Conditionally Lethal

Playboy Takes Look at Self

New York [RNS] — In the wake of the U.S. Supreme Court's recent rulings on obscenity, such "soft-core" magazines as Playboy and Penthouse are re-examining their photographic and editorial standards.

Unlike other periodicals with unprintable names and indecipherable contents that are usually available only at "specialty" bookstores, these magazines have been sold generally.

Most of them feature such things as interviews with famous persons and book condensations, in addition to articles and photos that emphasize sex.

But they are known for their centerfolds and other nude photos. And under the court's rulings, local communities may consider such things to be sufficiently offensive to have such magazines banned from public display or sale.

This is already happening in

Albemarle County, Va., for example, where Commonwealth Attorney Charles R. Haugh has ordered Playboy off the shelves. In order to prevent too much confusion about what is permissible, Haugh said, "we cautioned anyone selling questionable items to contact the sheriff's office."

In Chicago, a spokesman for Playboy magazine commented, "We're not obscene. We never have been and we never will be. We are quite confident in Playboy's status today and we're breathing quite comfortably in today's legal climate."

A New York Times report quoted a spokesman as having said that there will "be editorial adjustments (in Playboy), especially in the photography." Even more changes will reportedly be made in Oui, a magazine that was brought out by the same firm that publishes Playboy to counter the success of Penthouse magazine.

This program is based on the discoveries made by Dr. Jerome

Mutants." Dr. Ohlsson-Wilhelm added that the study is aimed at exploring the control of DNA synthesis in eukaryotic cells.

While this scientific jargon impresses the average layman, it does little to explain what is actually being done. Her eyes bright with excitement, Dr. Ohlsson-Wilhelm's enthusiastic description verified her statement, "My work is like an addition. It takes a lot of time, but I really want to know what makes these cells grow."

At 31, she is not the stereotype bespectacled image of a scientist. Nor is she caught up with a crusade believing that her work will find a cure for cancer. "I hope to be able to find one or two facts that will enable someone else to go one more step along the way," Dr. Ohlsson-Wilhelm said.

Breakthroughs made by the Freeds have eliminated this difficult task since their haploid line of frog cells have only one set of information. The vivacious U. of R. scientist said her role will include isolating the mutant cells from this line and studying how the mutants have been changed.

Frederick and his wife Dr. Liselotte Mezger-Freed at the Institute for Cancer Research in Philadelphia where Dr. Ohlsson-Wilhelm spent nearly three years doing post-doctoral work. The Freeds developed a haploid line of cells from frogs, that is, a line of frog cells which have only one set of chromosomes instead of the normal set of two.

Chromosomes contain DNA, a substance which is often called the "code of life," because it contains all the information needed to instruct other cells to grow, function and reproduce themselves.

Exposure to radiation or certain chemicals will change the information contained in the cell chromosome resulting in what are known as mutants. "Almost all cells have two copies of information so it is difficult to detect a mutant. It is only after changing both sets of information that it is possible to see one of these mutants that have been made experimentally from a normal cell," Dr. Ohlsson-Wilhelm explained.

This is where the term "condition lethal" comes into play. Dr. Ohlsson-Wilhelm will study this kind of mutant which can grow at both temperatures. This poses the question of why some cells die when exposed to a second temperature. Growth processes which are now temperature-sensitive in the mutants will then be defined.

Cancer cells are notorious for their seemingly immortal ability to grow and reproduce themselves indefinitely, Dr. Ohlsson-

wrong on issues such as this, it is a moral question. It is up to the man in the street to be aware of what's happening and to decide how far he is going to let scientists go," she maintained.

Besides her research project, Dr. Ohlsson-Wilhelm will deliver five to seven lectures this year as an assistant professor in microbiology. A graduate from Radcliffe College and Harvard graduate school, she also received a fellowship from the American Cancer Society for postdoctoral work at the University of Chicago.

With obvious pride Dr. Ohlsson-Wilhelm gave a short tour of her lab facilities. "I'm a little nervous about this; it's my first independent job and now I have to worry about all the problems," she smiled. Her husband, Jim, has an office right down the hall. They were one of the first couples to be hired in the same department by the University of Rochester. After hours they enjoy playing the violin and piano together.

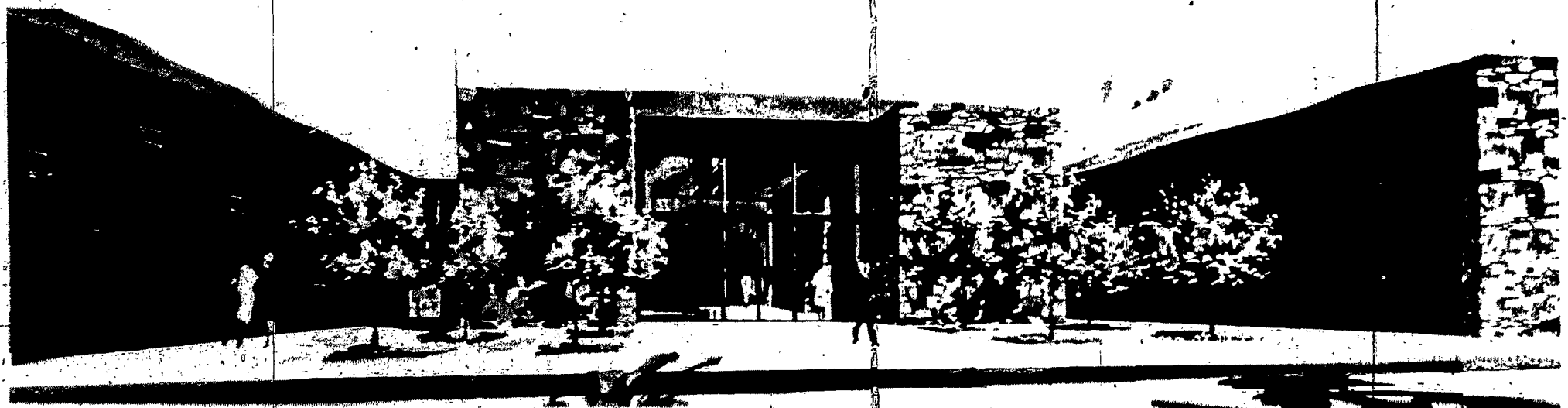
Research such as this is leading to the ability to move information in the chromosomes around from cell to cell and eventually from person to person.

The idea perpetrated in Frankenstein where man can make an image of himself is not impossible. "It is possible to move the part of the frog cell that contains the chromosomes into a frog egg and have it develop a good way towards becoming a frog," Dr. Ohlsson-Wilhelm reported.

Stressing the fact that many good things can result from the manipulation of chromosome information, Dr. Ohlsson-Wilhelm added that it can be misused. "Scientists have no special knowledge of right and



Dr. Betsy Ohlsson-Wilhelm works at frog cell scrutiny.



White Haven Chapel and Garden Mausoleum

The Cost of Mausoleum Crypts

At today's prices even King Mausolus of Caria could not have built his private Mausoleum.

Now, because of new modern construction techniques and the use of Granite — Steel and Concrete, the cost of clean, dry, above ground entombment is available to anyone. This includes Columbarium Niches for cremation as well as full casket Crypts.

Even though it is inevitable, no one looks forward to death. Since it is a fact of life, those who make preparations well in advance of need are those who benefit most.

Not only do they relieve the emotional and financial strain at time of need, but they also save a great deal of money.

It's hard to believe but pre need arrangements for Mausoleum Crypts made only ten years before need can result in savings of several hundreds of dollars over regular land burial.

The basic fixed costs of burial are increasing along with everything else. The facts and figures are all available.

Why not look into it now without the emotion or urgency of immediate need.

Why Select Before Need?

1. Peace of Mind.
2. Save Money.
3. Avoid Emotional Stress.
4. Wider Choice of Locations.
5. Low Monthly Payments.
6. No Interest or Finance Charges.
7. Permanent Maintenance Assured Forever.

Send coupon below for full color brochure—of course there is no obligation.

WHITE HAVEN MEMORIAL PARK
210 Marsh Road, Pittsford, N.Y. 14534

Grantier Neville President
Dear Mr. Neville:

CJ 8/8/73



Please let me have color brochure and information on all types of Burial and Mausoleum Property including cost, availability and details of no interest or carrying charge payment plan.

Name

Address

City State Zip