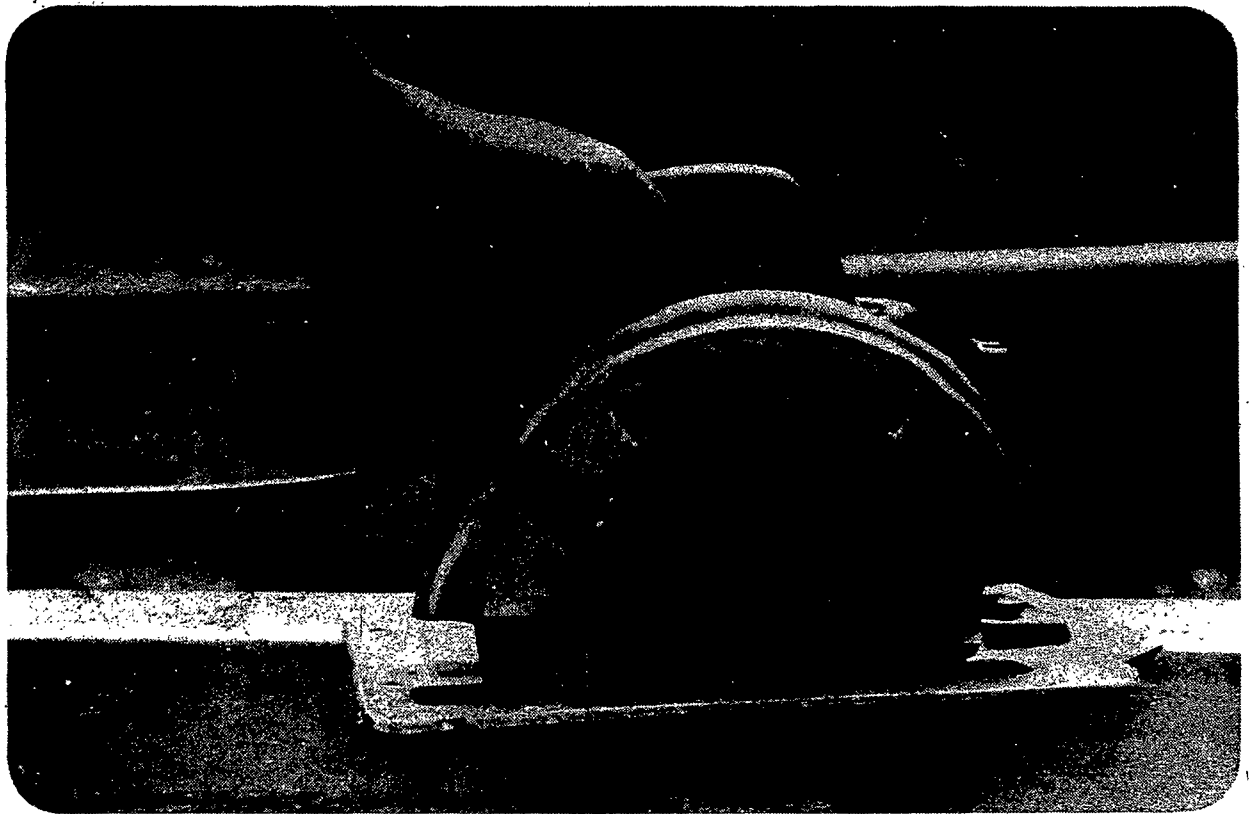
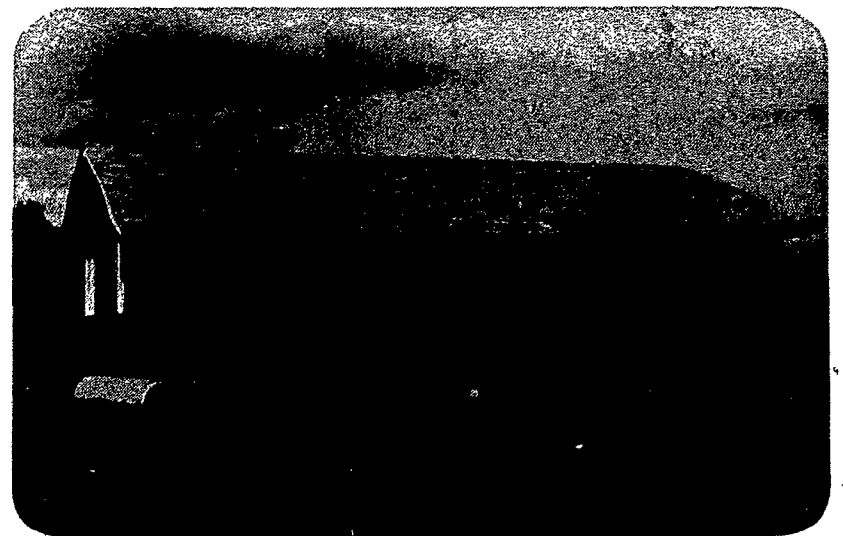
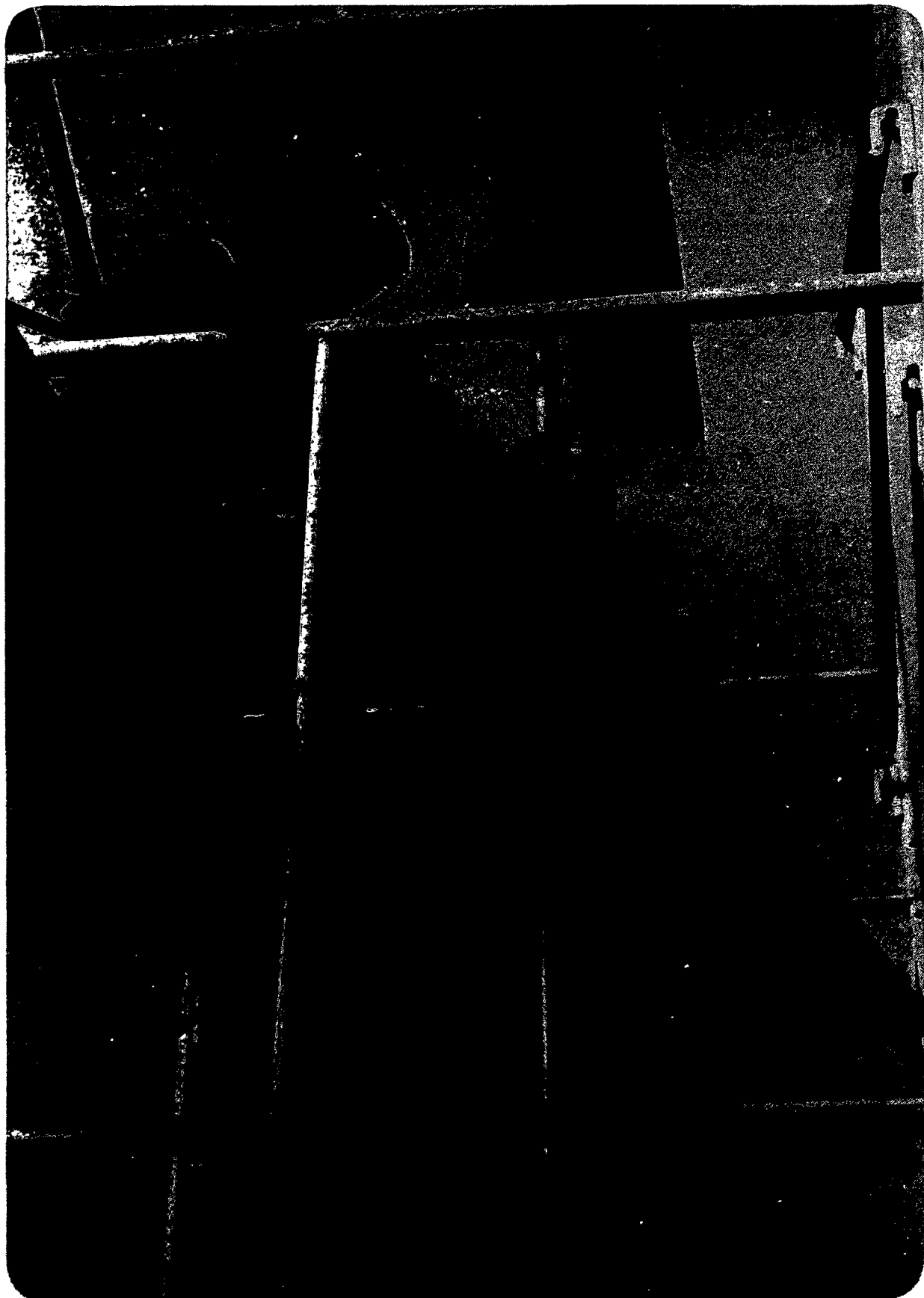
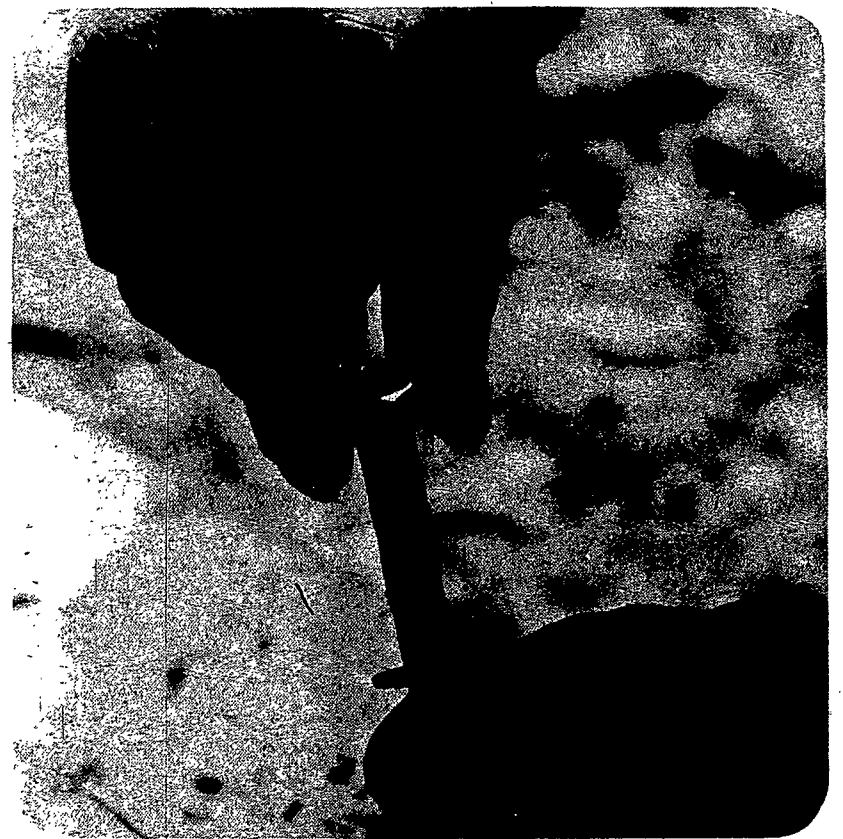


amwork: Key to Self-Help Rural Housing



Labor builds "sweat equity." Left, Abe Mahoney, project participant, works with a power drill. Above and right, Henry Greer, another participant, works with a power saw and bolting together roof tusses. Not all labor, however is done with power tools: below, construction assistant John Murphy, on right, works with Jess Whitson Jr. in attempting to hand drive a well.



A typical house (front and back) as it nears finish.

