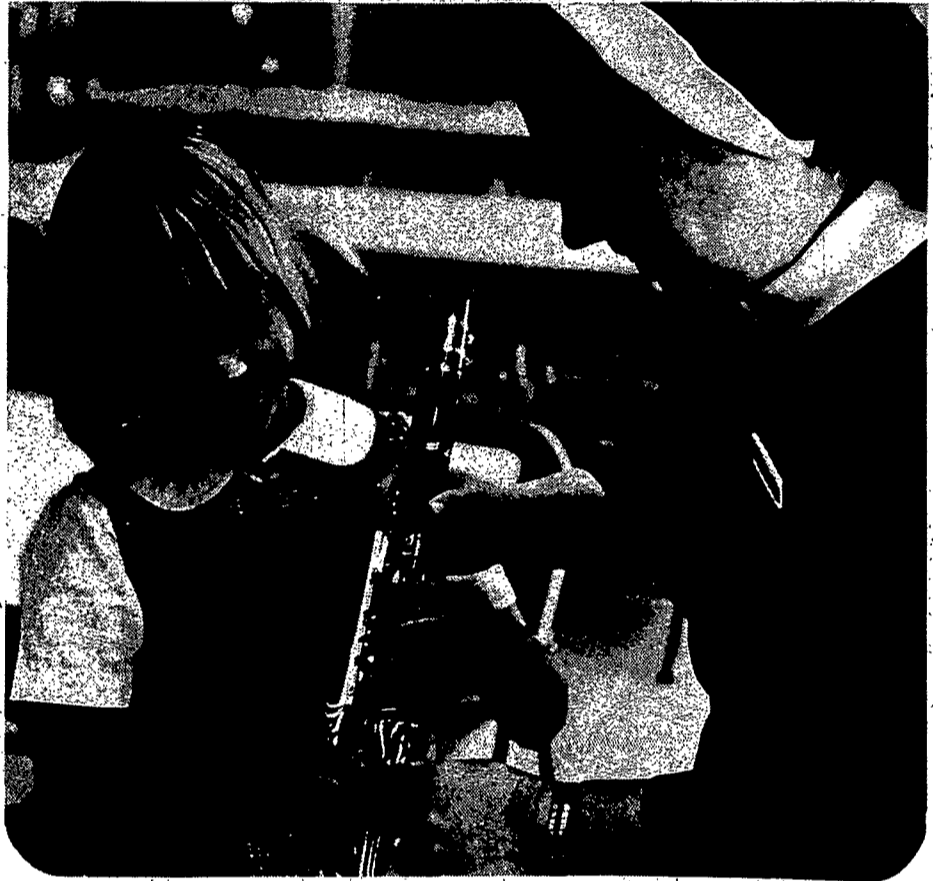




Chatting with children are Sister Jeanne, kneeling, and Sister M. Eileen, seated. Children are Patricia McInerney and Michael Ginalski, both of St. Mary's parish; and Bernadette Lynch of St. Patrick's.



... goes over some plans with Arnold Bentley, comptroller, Chemung Catholic Sister Clare Francis, standing, principal of St. Patrick's Junior High School; and Sister Mary Agnes, regional superintendent of schools in the Southern Tier.



Above, Sister M. Leona Didas helps Richard Michaels with trombone while, below, Sister Raymond Joseph Griffin tutors Barbara Rohan in clarinet as part of music classes at Region 5 Horseheads at St. Mary Our Mother School.

ings are the same, the classrooms haven't changed. Six Catholic elementary schools in Chemung County are no longer called by their parish names.

The reason for the change is the formation of the Chemung County Catholic School System. Under the new system, the six schools are known as regional schools.

The regional schools are used for elementary Catholic students up to grade six. The sixth grade is in the former St. Patrick's Elementary School, which houses junior high school students.

There are many firsts created by the new Catholic school system, including the formation of a Catholic junior high school, the first of its kind in the county, and the distinction of being the first such Catholic school in the diocese.

The new system, which was officially born the first of this year, uses its own bus system. Learning centers of less than five years ago in Chemung County schools, are located in each of the six regional schools.

The school system handles all its financial matters through the direction of Arnold Bentley, the Catholic school superintendent.

On types of programs at the various regional schools, the responsibility of the Chemung County Catholic School Board.

Each regional school is individually responsible for the day-to-day operation. Sister Mary Agnes, superintendent of schools in the Southern Tier.

Parents seem to have accepted the new program of education and several have been heard to say that their now students at Region 1 East, or Region 2 North, or Region 3 South, or Region 4 North, or Region 5 North, or Region 6 at St. Patrick's.

The school system's regional schools are: Region 1 at St. Mary's and Paul's, Region 2 North at St. Casimir's, Region 3 South at St. Mary's Southside, Region 4 North at St. Mary's, Region 5 North at St. Mary's, Region 6 at St. Patrick's.



Spiritual values are not overlooked. Bill Nichols, St. Mary's; Jim Comerford, Lourdes; and Robert Sowers, St. Mary's, pray at chapel in St. Patrick's Junior High School.