

# RG&E NEWS-NOTES

From the Rochester Gas and Electric — An Investor-Owned, Tax-Paying Company, Whose Stock Can be Purchased by Anyone — April 7, 1971

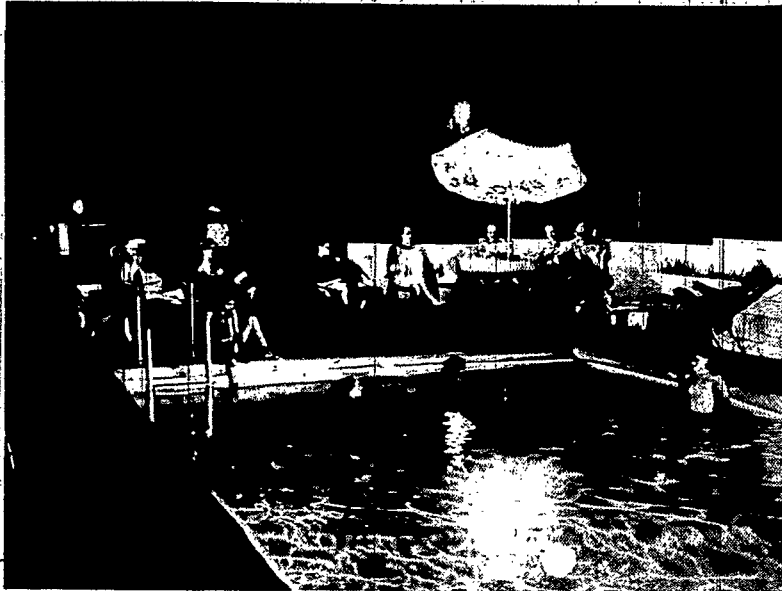
## Heart Association Cook-in for Wives

Dr. Frederick Stare, Professor of Nutrition and Chairman of the Department of Nutrition at Harvard University, will speak in Rochester on Tuesday, April 13, 1971, to homemakers about their important role in reducing their husbands' risk of heart attack and instilling good nutritional habits in their children. This educational program, entitled "The Way To Your Man's Heart" will be held from 1 p.m. to 3 p.m. in the auditorium of the Monroe County Cooperative Extension Association, 249 Highland Avenue, Rochester.

The program will also include a demonstration of low fat, low cholesterol gourmet cooking given by Mary McCartney, Senior Home Economist from RG&E.

Registration is required, although no admission will be charged. Ladies interested in attending should call the Genesee Valley Heart Association at 232-2820. Please register early since attendance will be limited.

## Get Ready for Outdoor Living



A well lighted pool and yard mean fun around the clock.

## Enjoy Brookwood During Easter Break

Take a relaxing drive along Lake Road to RG&E's Brookwood Science Information Center in Ontario, New York, where young and old can learn how nuclear energy is used to meet the increasing demand for electricity. Animated displays and exhibits describe how electricity is produced and how a nuclear power plant operates. A film and slide program explains how

RG&E's nuclear power plant was built and how it serves you. Our friendly staff at Brookwood will be happy to answer any questions you have.

The Brookwood Science Information Center is located on Lake Road in Ontario, New York. It is open every Wednesday through Sunday from 10 a.m. to 4 p.m. Admission is free.

You might not believe it to look out the window, but Spring officially began a week ago last Sunday. Soon you will be able to use your patio and backyard for eating, playing and entertaining. Is your yard giving you as much pleasure as it could be? Be ready for the warm days to come; make sure you have outdoor outlets, and lights that make your yard safe, useable and pretty.

Weatherproof outlets, placed in strategic locations where you often use electric equipment for cooking or gardening, are a boon to those who spend many warm days and evenings outdoors. You ought to have at least one and it should be protected from wind and rain with a cover and, above all, it should be grounded. A grounded outlet is recognizable by its third hole for the grounding line.

Lights can make your yard safer, and can be used effectively to accent trees and other parts of the garden. It is very comforting if you fear you have a prowler to be able to bathe your entire yard in light with a flick of a switch located inside your house. A single judiciously located floodlight serves this purpose nicely.

Steps, doorways, gates and paths should have about watts illumination to

eliminate the risk of people tripping or stumbling because they can't see where they are going.

You won't have to go indoors when the sun goes down if your patio is illuminated by lights mounted on posts, walls of the house or the porch ceiling. A special yellow bulb, available where light bulbs are sold, attracts fewer bugs than the conventional white ones.

Garden lighting can turn your backyard into a wonderland of color and highlights after dark. The only limitation is your imagination. You can get portable lights that plug into your weatherproof outlet and can be stored indoors over the winter, or you can install permanent lighting which will make your garden beautiful in the winter snow, too. Pick out several plants, trees, or sections of your yard and experiment with placement of the lights until you get a pleasing effect. If you have a picture window overlooking the yard, a well highlighted garden gives you a beautiful mural-like view through it at night. RG&E's Home Service Department has a booklet called "Add Charm to the Night with Outdoor Lighting" which is full of tips and ideas. Call them at 546-2700, extension 2617, and they will send it to you without charge.

Because the wiring for all this will be subjected to bad weather as well as nice, all your equipment should be the kind especially designed for outdoor use. Wet wires and fixtures are hazards; weatherproof outdoor wires and extension cords eliminate danger.

You should be careful with electric equipment around your swimming pool, too. Keep all radios, televisions, appliances and other such items away from the pool, and be sure your filter is grounded, and the outlet to which you connect it is also grounded. It's a good idea to disconnect the filter when you're not using it, too.

If you would like more information or advice on lighting or wiring your yard, call RG&E's Residential Department. We have a staff of experts ready to help you at no charge. You can reach them by calling 546-2700, extension 2751.

## Electrostatic Precipitators: Giant Dust Collectors That Keep Air Clean

Within the last decade, there has been increasing talk about ecology and pollution control. For that reason, it may be surprising to know that almost forty years ago RG&E began research and development to reduce particulate emission (dustlike particles known as fly ash) from our stacks.

The most effective reducer of fly ash is the electrostatic precipitator which acts as a giant dust collector. The coal we burn is composed of ten to twelve per cent ash, most of which is released as fly ash in the combustion process. If there were no collector, such as the electrostatic precipitator, the fly ash would go directly into the atmosphere. The remaining por-

tion of ash is removed from the bottom of the boilers as bottom ash.

Some of the first electrostatic precipitators in the country were installed at Beebe Station in 1935. Since that time many more electrostatic precipitators have been installed at our coal-burning facilities, and older units have constantly been upgraded. Our electrostatic precipitators are 95 to 98 per cent efficient, and we are working to improve their performance.

Here's how they work.

As the gases from the combustion of coal go through the boiler, they are routed through huge ducts which change the direction of flow and decrease their

speed. (Don't forget, the gases carry the fly ash with them.) As the gases carrying the dust pass through the ductwork, the dust particles receive a negative charge. The gases then move slowly into the heart of the precipitator where plates positively charged attracts them. It works like a magnet. Other emitter rods and collector plates repeat the process in the precipitator. The rods and plates are continually "rapped" and the dust particles are dislodged and fall into the hoppers below. The cleansed gases continue through the collector and go out the stack.

We have contracted to have most of the fly ash collected in precipitators hauled away. It makes excellent, firm fill and contains many of the essential minerals for the growth of vegetation.

In addition, fly ash is being used to make bricks and concrete. One of the RG&E suburban substations was built from bricks made of fly ash. Last year some fly ash we collected was sold to a firm which makes concrete.

The many uses which have been found for fly ash is a significant step in the successful recycling of waste products, so vital in our fight against pollution.

## Recipe of the Week

SPICY MUSTARD GLAZED HAM

Temperature: 325° F. Time: 1½ hours (15 minutes per pound)

- |   |                            |
|---|----------------------------|
| 6 pound boneless cooked ham               | 1 tablespoon dry mustard   |
| ½ cup brown sugar                         | ¼ teaspoon black pepper    |
| ⅓ cup apricot nectar or other fruit juice | ¼ teaspoon ground allspice |
|   | ¼ teaspoon ground cloves   |

1. Remove casing from ham and place on rack in roasting pan.
2. Do not sear, do not add any water. Bake in preheated oven.
3. To make glaze, combine brown sugar, fruit juice, mustard, pepper and spices.

4. Spoon over hot ham 30 minutes before end of baking time. Suggestions for Easter Dinner: Fruit Compote, Parsley Potatoes, Spicy Mustard Ham, Asparagus Spears, Spring Salad, Rolls and Alaska Ice Cream Pie. If you would like the recipe sheet for these suggestions please stop in the Home Service Department at 89 East Avenue for a free copy.

**BUY**

**of the Week**

**G.E.**

**Upright Freezer**

holds nearly 560 lbs  
of food

Model CA16DL

**\$ 239.95**

**FILL OUT AND RETURN THE COUPON TO:**

Dept. 34 Rochester Gas and Electric  
89 East Avenue, Rochester, N.Y. 14604

I would like more information on the following items:

.....

Name ..... Phone .....

Address ..... Zip Code .....