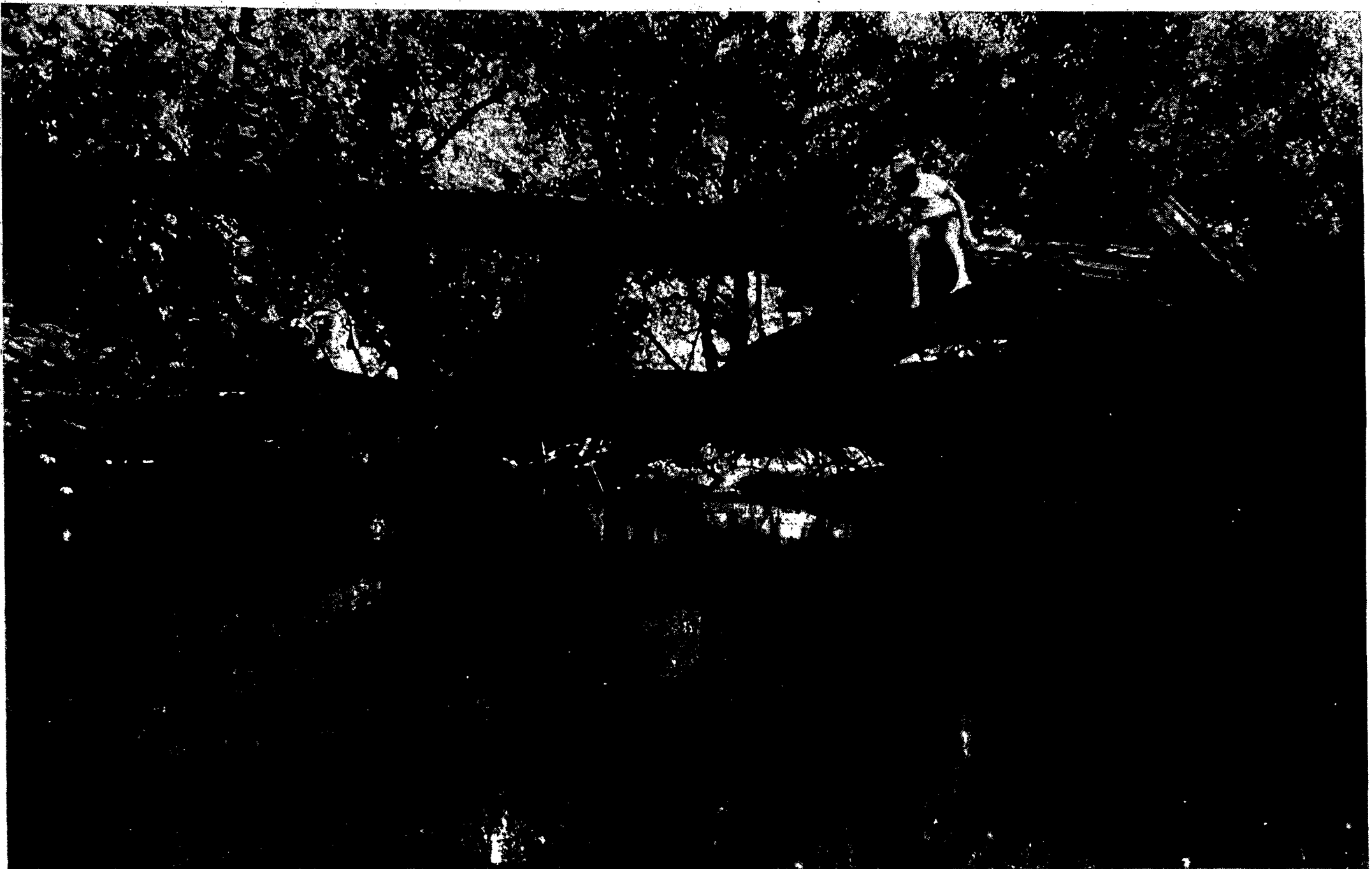


# COURIER-JOURNAL

NEWSPAPER OF THE DIOCESE OF ROCHESTER

2 Sections



## A Pond, A Boy at Summer's Edge

The gossamer mood of a young boy's pursuit of summer joy as the season's shadows lengthen and point to autumn is captured by Courier-Journal photogra-

pher David Stothers. For other haunting Stothers studies of children taken this Summer and a poem by Eugene Geissler, "Child," turn to the centerfold.

## Nixon Official Criticizes Pornography Unit Report

Washington, D.C. —(RNS)— The yet-to-be-released report of the Presidential Commission on Obscenity and Pornography suffered another broadside assault, this time from one of the top men in the Nixon Administration.

A conclusion drawn by the 18-member commission, that pornography has no significant effect in fostering anti-social behavior by those viewing it, was assailed by U.S. Atty. Gen. John N. Mitchell, who said he will continue to press for strong controls to curb dissemination of smut.

The commission report, leaked to the press recently by a House subcommittee but not formally released, almost immediately stirred up considerable controversy, including an outcry in Congress and a quick

disavowal by the Nixon Administration.

In remarks prepared for the National District Attorneys Association in Portland, Ore., Mitchell emphasized that "the commission is not connected with the Nixon Administration."

It was established by Congress in October 1967 and its original members were appointed by former President Lyndon Johnson. President Nixon has appointed only one of its members, a replacement.

A society owes it to its citizens, Mitchell said, "to encourage the best and discourage the worst" in human nature, no matter if there is a relationship between obscenity and anti-social behavior or not.

He took strong issue with

the proposition that pornography is harmless.

"If we want a society in which the noble side of men is encouraged and mankind itself is elevated, then I submit that pornography is surely harmful," the attorney general said.

"Both as individuals and as a nation," he continued, "we are as worthy as the quality of our thoughts and our interests."

Mandated by Congress to make an in-depth study of obscenity and pornography, the presidential commission has tentatively concluded from experiments that exposure of adults to smut does not lead to anti-social or deviant behavior.

The commission, with no authority other than to report on its study and make recom-

mendations, is expected to urge an end to restrictions on pornography, except for those protecting children and unwilling adults from exposure.

While the commission's opinions and conclusions will be given consideration, Mitchell said the administration intends to press for laws to curb public displays of obscene and pornographic materials, the mailing of prurient advertising to adults who do not want it, and the purveying of pornography to minors.

"I believe our society can

and should do something," he said, "to improve its own quality, and I believe we can do so within its constitutional framework."

Meanwhile, it was reported that the commission is considering recommending federally-financed sex education for all Americans, adults as well as children.

A "mass re-education" program could go a long way toward diminishing interest in pornography and the "potential undesirable effects of exposure" to it, the commission reportedly stated.

### ON THE INSIDE

#### Features

Editorial . . . . . 14-15A  
 Know Your Faith . . . . . 5B  
 Music Bag . . . . . 2B  
 Women . . . . . 10B  
 Recipes . . . . . 10B  
 Nation . . . . . 6B  
 Entertainment . . . . . 2B  
 Local . . . . . 9A

#### Columnists

Child . . . . . 10B  
 Considine . . . . . 15A  
 Costa . . . . . 2B  
 Cuddy . . . . . 12A  
 Greely . . . . . 12A  
 Kennedy . . . . . 8B  
 Shamon . . . . . 14A  
 Viglucci . . . . . 15A

## Palmyra Church Suffers Severe Wind Damage

Palmyra—St. Anne's Church and rectory suffered serious wind damage here Sunday night during a 70-minute storm in the Greater Rochester area which tore down powerlines, flooded basements, stranded cars and blew mobile homes into the air.

The 40-mile-per-hour winds dislodged the St. Anne's Church steeple, which was moved over but not blown off.

Father John J. Healy, pastor, reported that the gusts caused damage to 25 percent of the roof, as well as to the side porch and windows of the rectory. It occurred at 9:12 p.m. Insurance agents were inspecting the damage on Monday.

St. Anne's, one of the oldest parishes in the area, was established in 1850. The present church building, begun in 1860, was dedicated by Bishop Bernard J. McQuaid in 1870.



St. Anne's, Palmyra

Wednesday, September 2, 1970