

RG&E NEWS-NOTES

From the Rochester Gas and Electric — An Investor-Owned, Tax-Paying Company, Whose Stock Can be Purchased by Anyone — July 1, 1970

Pool Cues for Safe Swimming this Summer

Your swimming pool is a great source of enjoyment and relaxation during the warm summer months. But, like most things, care must be taken that certain rules regarding its use are followed in order that you may get the most benefit from the pool and that needless accidents are prevented.

Assuming that everyone trying to use the pool has the ability to swim, the most common reason for accidents is inattention to the proper use of electricity around the pool.

Often people feel the need for electricity in the back yard around the pool, they string together several extension cords, laying them over shrubs and tree branches. These cords are a temporary measure only and should never be left out in the rain or in overnight dampness. Moreover, they should never be put where they could accidentally fall into the pool.

Home pools need electricity for their pumps, filtering system and lighting.

When you have your pool wiring installed, make sure it is done properly and that all equipment is grounded according to National Electrical Code requirements.

All other electrical equipment, such as radios, phonographs should be kept away from poolside. This is to protect you against the extreme danger of splashing or knocking equipment into the water.

As a double check follow this rule: No swimming allowed when electrical equipment is being used at the pool.

Obeys these rules and enjoy a safe and pleasurable summer in your pool.

Light Your House Number

Make it easier for friends to find your home with an illuminated address sign. A post lantern to light the way toward your front door, which should also be lighted, is suggested by the American Home Lighting Institute.

Don't Let Mildew, Rust or Warping From Humidity Damage Your Basement

Protect your stored clothes from mildew, your expensive tools from rusting, paint from peeling or paneling from warping and rotting by getting a Westinghouse Dehumidifier.

The above mentioned damages are various end results of dampness in your basement. Basement moisture is caused by the summer's high humidity and the lack of proper air circulation. The stale smell found in many basements is the result of improperly circulated air.

A Westinghouse Dehumidifier will help you dry up basement moisture. To operate simply plug it in and set the humidistat to the desired degree of dryness. When the moisture laden air touches the exposed air drying coil, it drips into a 10 quart detachable plastic bucket. This bucket will not overflow because of the automatic water overflow control.

RG&E, 89 East Avenue, has Westinghouse Dehumidifier (Model ECJ20) priced at \$107.00. Budget terms available. If you prefer to order by phone, call 546-2700, extension 2428.



A dehumidifier gives you sure protection in damp weather.

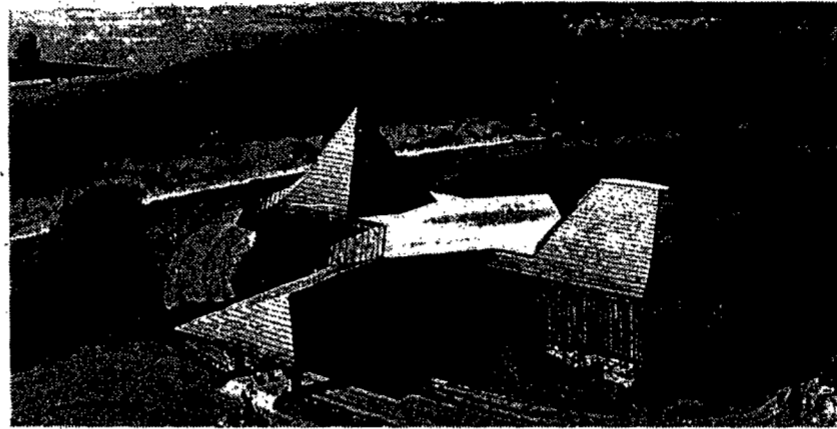
Recipe of the Week

For a carefree summer meal...
CHICKEN IN FOIL Temperature 375°F Time: 1½ hours
 1 chicken breast, cut in half; Aluminum foil
 2 legs, 2 thighs ¼ t nutmeg
 1 can condensed mushroom soup

- Place each piece of uncooked chicken on a square of foil large enough to wrap up chicken.
- Add nutmeg to soup and mix thoroughly. Pour over the chicken and fold foil around the chicken using a drug store wrap, folding edges securely to hold steam inside package.
- Place in a shallow baking pan and bake in preheated oven, or cook out-of-doors on grill for approximately 1 hour.
- Serve in foil on dinner plate so each person can undo the foil. Note: Use neck, back and wings of chicken for soup or creamed chicken.

This and many other chicken recipes are in our booklet "Ways With Chicken." Stop in the Home Service Dept. for a copy.

Drive Out to Brookwood for Educational Fun!



The Brookwood Science Information Center

Overlooking Lake Ontario on the same lovely grounds with RG&E's first nuclear power plant is the Brookwood Science Information Center. It was built by RG&E to help you unravel the mystery of the production of electricity by nuclear power.

Going through Brookwood Center is both fun and educational. Interesting animated displays which will delight you and your children, present the story of the principle of nuclear energy and how it is used to produce electricity. A favorite display of the younger visitors is the animated model of the same nuclear reactor used in RG&E's own nuclear power plant, Ginna Station.

In the auditorium you will see a film which shows you the care taken in the construction and operation of such a facility. But probably the highlight for some is the presence of staff members who can answer any questions regarding Ginna Station.

Take your family out on a pleasure ride to Brookwood for a free tour of the Science Information Center, located 16 miles east of Rochester on Lake Aoad, near Ontario Center. The Center welcomes your visit Wednesday through Sunday, 10:00 A.M. to 4 P.M. Special arrangements can be made for group tours and should be scheduled in advance.

Safe Care of Meats at Picnics

All meats, poultry and fish or any food containing these should be frozen or kept cold until they are eaten or prepared at the picnic site. Place unfrozen meats, poultry and fish items near frozen foods or ice to keep cold. If possible carry these foods to and from the picnic site in an insulated chest or cooler.

Hot dogs may be frozen in their packages or stuffed with a cheese filling and frozen two days ahead. Hamburgers should be seasoned, formed into patties, separated by two thicknesses of waxed paper, packaged in desirable quantities and frozen at least two days ahead.

Light Up Your Summer Garden

One of the pleasures of summer is the garden. The colors, the fragrance, just being outside working in it, all contribute to this feeling. But don't limit enjoyment of your garden to daylight. With proper use of outdoor lighting, your garden can look just as charming and just as beautiful during the night as it does during the day.

Do not try to use lights to make your garden look the same during the night as it does during the day. Not only is this difficult to achieve, but also the beauty of the garden at night lies in the dramatic contrasts of light and dark, all set against a velvety black background.

Use a variety of small accent lights to highlight various elements in your garden. If you rely only on floodlights for garden lighting, the effect is a flat, less interesting appearance. By using numerous lights in addition to some floodlighting, you will achieve a more subtle beauty.

Try to conceal the light bulbs and the fixtures. Buy lights with some kind of shade or shield which hides the bulb. Thick shrubs or hedges can be used to disguise fixtures.

But whatever your taste in garden lighting, make sure that your concern for safety is as important as your concern for beauty. Whenever you are using electricity outdoors, such as in lighting, make sure all equipment is designed for outdoor use. Talk to your local electrician about permanent outdoor wiring. He can help you to determine your needs and how to meet them. By consulting a professional you can be sure you will enjoy safer and more effective garden lighting.

Spring Clean Furnace Filters

Now that the long, hard winter is past and you're beginning to spring clean your house don't forget your hidden protector — your furnace filter. Your furnace had to work extra hard this past winter to supply you with the needed warmth for your family. As a result air circulated through your furnace more often and the filter collected more dirt particles. In collecting this dirt the filter protected your family and your furnishings from damage.

But when your filter becomes excessively dirty, your furnace can't do its best job. It is forced to work overtime trying to push the circulating air through the dirty filter. This results in higher operating costs which in turn make your monthly bill higher.

You also stand a good chance of having some of the collected dirt forced loose as the air attempts to pass through your filter. When this happens you've destroyed all the good work your filter did during the winter.

It would also be wise, while you're cleaning or replacing your furnace filter, to check the filters on your central air conditioning system before using it.

RG&E Closed Friday, Saturday, July 3 & 4

In observance of the coming holiday weekend our Appliance Sales Department and business offices will be closed.

In case of an emergency, service can be obtained by calling 546-1100 anytime, day or night.

Buy of the Week
EUREKA
 Upright Vacuum Cleaner
 Model 2010
\$59.95
 with attachments

FILL OUT AND RETURN THE COUPON TO: B

Dept. 34 Rochester Gas and Electric
 89 East Avenue, Rochester, N.Y. 14604

I would like more information on the following items:

Name Phone
 Address Zip Code