

Have
a Duke
...the
fun
beer



Duke makes any time a fun time. It's the kind of beer you can live with ... beer after beer! And if you're only having one DUKE, you're missing half the fun!

PITTSFORD BEVERAGES INC.

CLOSED MONDAYS
Duquesne Brewing Co., Pittsburgh, Pa.
144 Humboldt St. 482-9583

COME
FLY WITH US
Every Fri. & Sat. Eves.
9:30 P.M. - 1:30 A.M.

presenting
KENNY UNWIN and CO.
featuring
Vocalist
BOB DINIERI



The
Maplewood Inn
EAST AVE
582-1117

Courier-Journal

A-3 6884

A Sunday Walk For Air and Water

A ten-mile litter pickup walk through the city will start at 10 a.m. Sunday, June 28, in Genesee Valley Park and end at Ontario Beach Park.

Sponsored hikers will make 25 cents a mile for the Monroe County Conservation Council.

The council organized the event as a publicity stunt to point out environmental hazards, and also as a source of funds to carry on such activities as water and air pollution testing. Dr. Joseph E. Barra, 621-5794, is walk chairman.

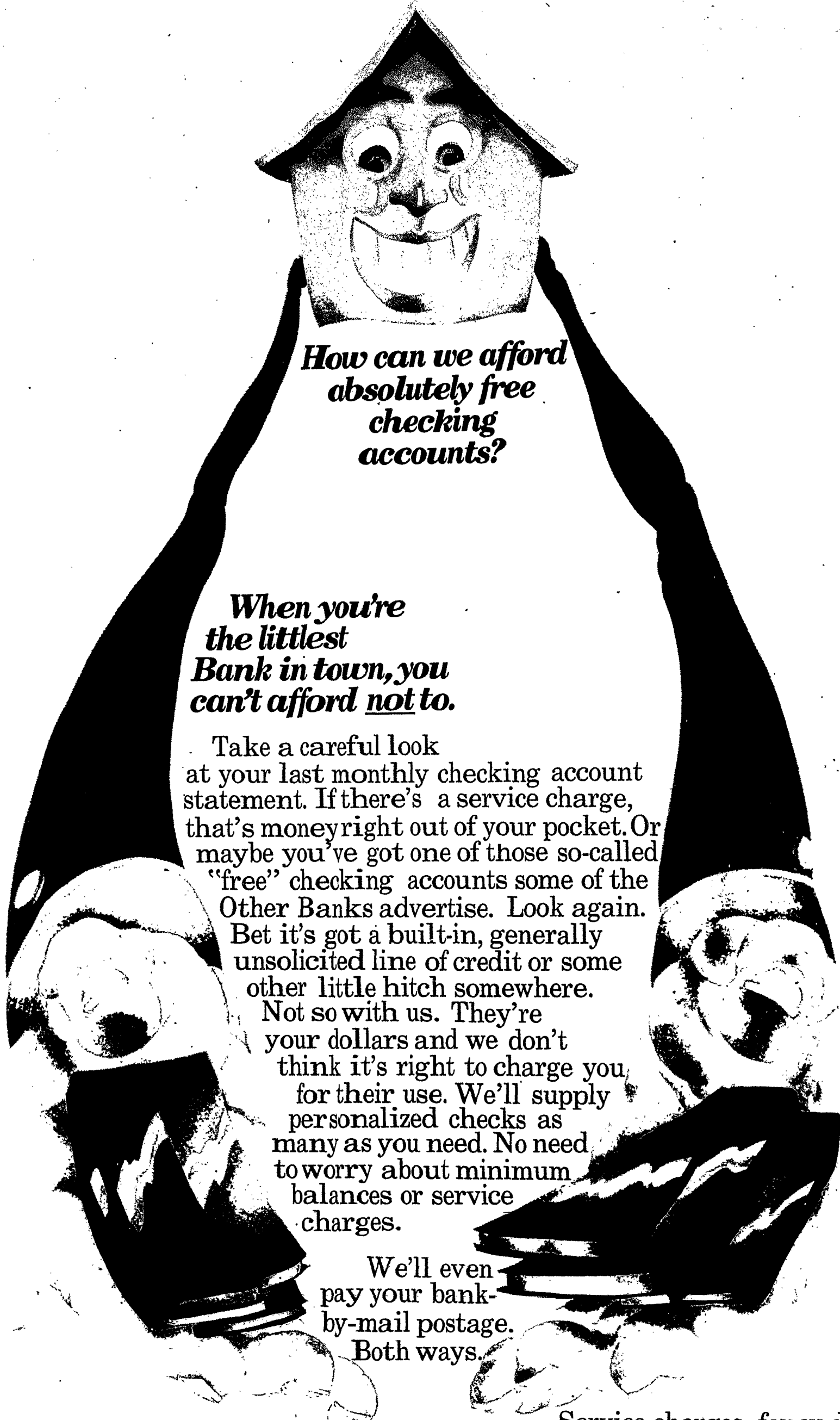
Young Violinists In Montreal Fete

Seventeen youngsters from St. Jerome's, East Rochester, performed at the Third International Suzuki Violin Festival last Saturday in Montreal.

Sister Helen Anne, their music director, and a group of par-

ents accompanied the children, who range in age from five to 13 years.

More than 200 young Canadian and U.S. violinists took part in a mass concert, sponsored by the Quebec Music Educators Association.



**How can we afford
absolutely free
checking
accounts?**

**When you're
the littlest
Bank in town, you
can't afford not to.**

Take a careful look at your last monthly checking account statement. If there's a service charge, that's money right out of your pocket. Or maybe you've got one of those so-called "free" checking accounts some of the Other Banks advertise. Look again. Bet it's got a built-in, generally unsolicited line of credit or some other little hitch somewhere. Not so with us. They're your dollars and we don't think it's right to charge you for their use. We'll supply personalized checks as many as you need. No need to worry about minimum balances or service charges.

We'll even pay your bank-by-mail postage. Both ways.

Service charges, fancy-dan check and passbooks, stuff like that, are for the Big Boys. We may be little but we're the only privately owned and governed commercial bank around. We determine our own policies. Aren't you glad there's at least one bank which still does?

**First National Bank
of Rochester**

Main Office: 35 State Street, at Four Corners; 3140 Monroe Avenue, across from Pittsford Plaza*; 1370 Lyell Avenue, at Mt. Read Blvd.*

*Hours: Monroe office: Mon.-Wed. 9-3; Thurs. 9-6; Fri. 9-8.
Lyell office: Mon.-Wed. 9:30-3; Thurs. 9:30-6; Fri. 9:30-8.

Member Federal Reserve System and F.D.I.C.



Wednesday, June 24, 1970

MADE IN U.S.A.

Page 8-A

1581006-1010000

Chi
Ask
Par

Chi
C a t
cials
Chica
hope
found
facin

Pul
been
wher
schoo
city s
for a

In
Scho
serie
order
tudes
A de
arch
to it
July

Un
city
olic
parol

Th
ly er
in th
by 1
publ
Sept
or a
Sept

Ac
ert
inter
sugg
scho
woul
scho
of 1
paro
pay
facil

F:
the
boar
caus
be g
mat
men
Cath
rece
funi
roll

So
F.
esta
the
mar
deta
ed
go

J
fer
arcl
vey
san
ed
que
the
sub

par
den
whi
sch
Sep

to
tim
ord
kin
lic

tha
to l
sch

1
4

0
1

1
0
0

1
0
0

1
0
0

1
0
0