

RG&E AND NEWS-NOTES

From the Rochester Gas and Electric — An Investor-Owned, Tax-Paying Company, Whose Stock Can be Purchased by Anyone — April 8, 1970

"Would You Believe . . ." John Doe Visited Brookwood?

Every year over 65,000 John Does visit the Brookwood Science Information Center.

The Brookwood Center is an educational facility explaining the beneficial and peaceful use of nuclear energy and its adaptation to the generation of electricity.

Today's John Does will find the many animated exhibits with audio descriptions enjoyable and interesting. The exhibits show how man has controlled the many sources of energy for his own benefit. One of the exhibits explains how nuclear power produces electricity. Here an animated cross-section of the entire power plant shows how heat from

the reactor produces steam for the operation of the turbine and the subsequent generation of electricity.

If your group would like to tour the facilities, arrangements can be made in advance by calling 546-2700, extension 291-203 or by writing RG&E Brookwood Science Information Center, 89 East Avenue, Rochester, N.Y. 14604.

The Center is open to the public without appointment Wednesdays through Sundays from 10:00 A.M. to 4:00 P.M. To get there from Rochester, drive north on the Sea Breeze Expressway to Lake Road and then east for 16 miles. Or, drive east on Ridge Road. Watch for the signs.

Summer's Coming! Are You Prepared?

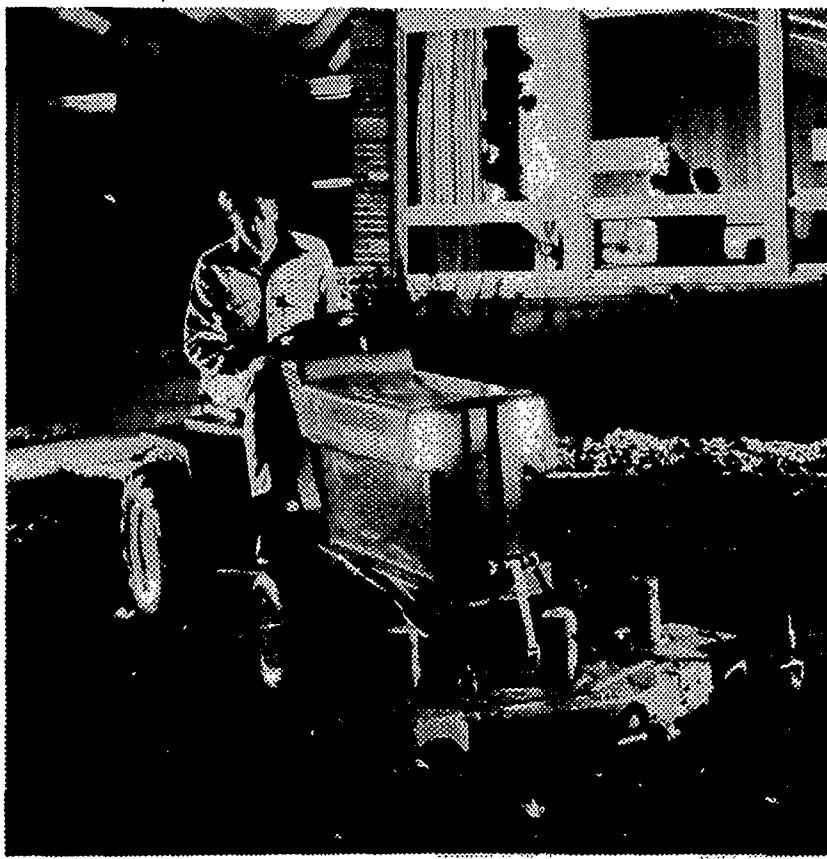
Why wait until mid-summer when the weather is truly unbearably hot and humid to install central air conditioning? Air conditioning contractors have their hands full with work during the hottest months of the summer, and you may have to wait weeks to have your system installed, if you don't act now. By installing central air conditioning now, you will gain full enjoyment the summer long and even be prepared for those occasional hot, sticky days in May. So you see, summer is not as far off as you think, and now is the time to consider central air conditioning in your home.

Central air conditioning means "summer comfort".

Your family will be healthier in a centrally air conditioned home. They will sleep better on hot, sticky nights and awake more refreshed in the morning. And an air conditioned home isn't plagued by insects. Pollen and other air borne irritants are greatly reduced, giving allergy sufferers greater breathing comfort. Babies will not develop itchy heat rash. What to serve for dinner on a sultry summer day will no longer present a problem. Your family can eat in comfort and desire the same well-balanced meals they eat at other times of the year. Entertaining guests will be easier and more relaxing; and your know they will enjoy your hospitality even more because of your central air conditioning.

No matter which type of central air conditioning system you select, proper sizing of equipment to meet the demands of cooling your home is crucial. To assure accurate system-sizing, call your professional heating contractor or a trained RG&E heating specialist to survey your home and calculate the proper requirements.

Electrak: A New Electric Powerhouse from GE



The ELECTRAK begs to be used and is fun to run

Now it is possible to take the convenience and versatility of electricity outside the four walls of a building without electric extension cords, thanks to the Electrak by GE. Electrak, the original electric garden tractor, looks like almost any other garden tractor. But runs on battery dry cells that recharge on house current. Electrak is your outdoor power center, bringing new convenience to gardening and home care, because you simply plug your power tool into the tractor for use anywhere. No extension cords are necessary.

A 36 volt convenience outlet in the tractor body can be used to power the complete line of 36 volt outdoor tools. GE's outdoor appliances include each augers, hedge shears, lawn edgers, grass trimmers, drills, chain saws, snow blower, plow blade and the like. Accessories are started, lifted and controlled with switches at the operator's fingertips.

The Electrak produces no fumes and is quiet enough to use even on Sunday morning. The neighborhood's peace and quiet won't be disturbed because Electrak's quiet power system, eliminates noise.

The electric tractor is not only suited for home use but also baggage handling, for materials handling in plants and warehouses and for lawn and garden care at hospitals, schools, universities, plants, cemeteries and farms and in feed lots and barns.

While RG&E does not sell the Electrak - electric tractor, simply fill in and return the coupon for further information.

To Wash or Not To Wash?

It happens all the time! Your new dress needs cleaning and you don't know if it's washable or not. Of course, your best guide to the proper care of your wardrobe is the hang-tag that comes with each garment. It should give you washing instructions and fabric content, which is especially important for stain removal. If you have mislaid the hangtag of some of your garments, refer to this list to help determine whether or not the fabric is washable.

Generally washable—
acrylic, cotton, linen, nylon, polyester.
Sometimes washable — usually recommended for hand washing—
acetate, rayon
Not washable, unless stated otherwise—silk, wool.

Quote of the Week

A gold digger is the type of girl who tries to shorten the distance from wink to mink! — Dana Robbins.

Proper Lighting Makes Kitchens more Enjoyable

The kitchen of today is better planned, more attractively decorated and equipped with more labor-saving appliances than ever before. All this makes working in the kitchen more pleasant and efficient. But all too often one of the most important elements of kitchen design fails to receive the attention it deserves.

Well planned kitchen lighting makes food preparation, cooking and cleaning easier and faster. It also makes it safer because it helps prevent accidents, burns and cuts. Proper lighting helps create a cheerful environment, making the kitchen a much more enjoyable place to work in.

Fluorescent tubes are ideal for kitchen lighting. As compared to the familiar incandescent bulb, their softer, more diffuse illumination is easier to see and work by. They supply more than three times the light output of incandescent bulbs for the same amount of electricity. They are cooler which is a point to consider with heat created with cooking.

The greatest variety of seeing tasks and the most difficult are performed at the sink area. That's why good lighting in this area is a must. Lighting above the sink supplements unreliable daylight. The light here should be ahead of the worker, which prevents working in one's own shadow, decreasing efficiency and increasing the chance of accidents.

Local lighting is as necessary at the cooking area as it is at the sink. It lets you see to brown meats properly, measure ingredients, detect burning and determine proper consistency of sauces and gravy. The light that comes from free standing ranges is never adequate; therefore, local lighting must be designed in the kitchen plan for both free-standing and built-in range units.

Not to be overlooked, proper recessed lighting above cabinets and under-cabinet lighting helps to brighten your kitchen, and at the same time, illuminate your work. For further information on kitchen lighting, return the corner coupon.

Recipe of the Week

ASPARAGUS ORIENTAL

- | | |
|------------------------------|-----------------|
| 1 bunch asparagus | ½ teaspoon salt |
| 1 to 2 tablespoons salad oil | Dash pepper |
1. Wash asparagus thoroughly. Snap off white portion that is usually tough.
 2. Cut spears into bias pieces of 1½ long.
 3. Heat large skillet; add salad oil and when hot add the asparagus and seasonings.
 4. Cook covered over medium heat until just tender, about 8 to 10 minutes shaking skillet frequently.

These and many other foreign delicacies are included in our recipe booklet entitled "Food Fantasia 'Round the Globe". This booklet and many others are available from the Rochester Gas & Electric Home Service Department.

Spread Cheer and Charm with Gaslights

Plant a Charmglow gaslight now! They go great in your front lawn, by your driveway, on your patio or at poolside. Wherever you plant it, it's sure to spread a warm friendly welcome to family and friends. You'll find there's nothing quite as majestic as the soft, warm enchanting glow of a Charmglow gaslight.

Gaslights keep a stately vigil around your home discouraging prowlers and vandals from entering and damaging your property while you're away. Or, when returning home late at night, this silent, stately 24-hour sentry is there to greet you with its soft, warm, glareless illumination that will not annoy your neighbors or attract unwelcomed insects.

These gaslights are available to our natural gas customers only: And for only \$69.95 complete with normal installation (up to 50 feet). No sales tax required to be added on installed price.

Call RG&E now at 546-2700, extension 2428 and order your gaslight now!

BUY of the WEEK
WEST BEND
Demonstrator
HUMIDIFIERS
\$67

FILL OUT AND RETURN THIS COUPON TO:

Dept. 34 Rochester Gas and Electric
89 East Avenue, Rochester, N.Y. 14604

I would like more information on the following items:

.....
.....
.....
Name Phone
Address Zip Code