

## The Breaking Down of Barriers Between People

(Continued from Page 54A)

lating adult education and the role of the parents.

So much of our work with the young is not relevant, he says, that we need well-trained people who are versed in the psychology of youth, who can revamp the religious education program for young people through use of films, small classes and discussion groups.

"Buildings are needed, but maybe one good parish building could take care of all needs, for example one chapel, plus an auditorium for large group Masses, meetings, etc. Our buildings need not be so large and numerous; a different style of parish plant where everything is under one roof would serve the purpose well, and would alleviate the strain of operating costs," according to Father Kreckel.

If urban renewal is successful, economic and racial integration should be achieved in the future, according to Father Kreckel. Hopefully, the parish can be a step ahead in this process, though his own has a long way to go yet in reaching the type of community which



Bishop Sheen chats with Latin Americans on his first visit to Concordia Hall on Clifford Avenue, the center of the diocesan Spanish Apostolate.

should exist. He does not see the role of the church in the future as developing the "in group" type of mentality, specializing in social friendships, but rather as encouraging a consciousness of unity on a much greater scale.

A parish community should

not be compared to a family, but rather a member should have a feeling of belonging to a total group, conscious of his membership in the whole church and of his relationship with other people, Father feels.

For example, the people who come to the ten o'clock Mass on Sunday at Immaculate are aware of being members of the same group, of an openness and sharing.

What of the role of the parish priest in inner city? Father Kreckel suggests a new look at

the traditional approach of the priest who visits the sick and sees every parishioner in his home. Not that these duties are no longer important—but the priest must be aware of the needs of all, and restructure the parish so that these needs are met by someone, since he himself cannot possibly do it all.

Obviously the Church's traditional patterns of service in the city are undergoing drastic evaluation. As public and private secular resources, often partly due to church urging, assume larger responsibilities for social welfare, the Church has been relinquishing its traditional health, education and welfare role to these auspices.

But churches are recognizing the limitations of service projects developed outside a community and administered in behalf of the residents.

Our inner city parishes and organizations are feeling the pressure to change; not everyone is certain of the outcome, but all are convinced that the Church will continue to be called to provide direct service in areas where alienation and suffering are critical and ignored.

Good Luck and Best Wishes

on your

100th ANNIVERSARY

from

**John M. Forster Co.**

444 CENTRAL AVENUE

ROCHESTER, N. Y.

232-5410

Established Since 1890

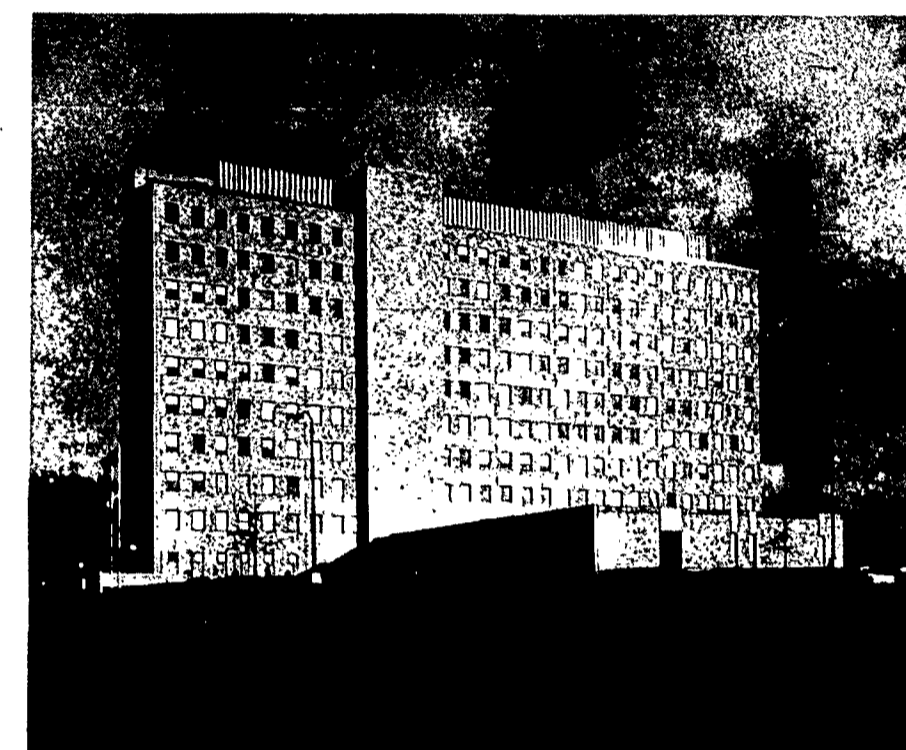
*Best Wishes on Your  
100th Anniversary*

SWARTOUT & ROWLEY, Inc.

GENERAL CONTRACTORS

548 MT. HOPE AVENUE

ROCHESTER, N. Y. 14620



General Contractors for recently completed  
Monroe County Health & Welfare Building

*Our Best Wishes  
for The Next 100 Years!*

We shared over 60 years of the first 100 years, in making this area a better place to live and worship.

Our services include: Plumbing, Heating, Ventilating, Air Conditioning, Process Piping, Sprinkler & Fire Protection.

**E. G. SNYDER CO., Inc.**  
Mechanical Contractors

86 Scio St., Rochester, N. Y.

325-5085

*Congratulations and Best Wishes  
on your  
100th Anniversary*

**Scanlon TIRE**

COMPANY INC.

Home Owned & Operated

DISTRIBUTORS OF

**COOPER - CONTINENTAL  
SEIBERLING**

TWO LOCATIONS

of Personalized Service

**115 RIDGE RD. W.**  
OPPOSITE KODAK PARK

RETAIL  
STORE

Complete Passenger  
Car Service

- Wheel Balancing
- Complete Front End Service
- SHOCKS • BRAKES
- SPRINGS • BATTERIES
- N.Y.S. Inspection Station

**458-0200**

**811 LAKE AVE.**  
NEAR DRIVING PARK AVE.

COMMERCIAL  
WHOLESALE - RETAIL

• Specialist in Truck  
Tire Service  
Custom

- Electric Retreading For Passenger and Truck Tires
- Electrically Cured For Safer Retreads Vulcanizing

**458-3610**

CONVENIENT PARKING AT BOTH LOCATIONS

*Congratulations on your 100th Anniversary*

We, too, are proud of the part we have played in the expansion of the Catholic Church during this period for our same family business has had the privilege of furnishing Offering Envelopes for churches in the Rochester Diocese for three generations during the past 50 years.

T. ALBERT FARNSWORTH, *President*



**FARNSWORTH**  
ENVELOPE COMPANY  
CAMDEN, NEW YORK 13316

THE MAILING SYSTEM FOR  
CHURCH OFFERING ENVELOPES

**BEST WISHES**

TO THE

**DIOCESE OF ROCHESTER**

We're Proud to Have Played  
A Part In The Production of  
This Commemorative Issue.

**RIVERSIDE BOOK BINDERY, INC.**

Service Is A Binding Feature

171 YORK ST.

235-1782