

# Iran's Stability Lauded By Army Signal Officer

Student demonstrations are no problem in the Near East, reports a Rochester military man who has just returned from that part of the world.



LT. COL. LOUIS WELCH

"They just aren't allowed," said Lt. Col. Louis Welch, U.S. Signal Corps, declining to elaborate on the succinct observation. He was in Rochester last week for a brief leave after two years as a technical adviser on electronic communications with the Iranian military forces. The United States has a number of service personnel serving in Iran as military advisers.

Christian missionaries are not allowed in Iran, either, he commented, but this isn't so unusual in a Moslem nation where church and state are closely knit. There are some Catholic priests in the country, but they are either military chaplains or assigned to care for diplomatic personnel serving in Iran.

In the midst of neighboring countries which are rather hostile to the United States, Iran has managed to keep a friendly rapport with the U.S., while yet avoiding conflict with its northern neighbor, the USSR.

While almost all the Iranians are Moslems, they are not Arabs. Their language and heritage are Persian, and they can trace their cultural history

back some 2,500 years, Col. Welch commented.

An Aquinas graduate, class of 1931, Col. Welch has been in the Army for nearly 27 years. He specialized recently in electronics communications and will report next to Army Strategic Communications Command (STRATCOM) in Ft. Huachuca,

Arizona, where he will be assistant chief of System Division, Communications Engineering.

He enjoyed his tour of duty in Iran, judged it to be one of the most stable regimes in the Near East (they've had the same Shah since World War II) and admired their economic development. "Oil is the big revenue producer, of course, around \$800 million a year from that alone — but Persian rugs are still a big export industry."

Despite the fact that 65 percent of Iran's 25 million people are illiterate, the country has made rapid strides in its recent development. Colonel Welch paid high tribute to the present Shah, who has expended large sums for literacy programs and water development. Iran suffers from lack of water resources, the Rochester Army officer noted.

Col. Welch and his wife Katherine, will live at 106 Mizner Ave., Ft. Huachuca, Ariz.

## 2 Religious Schools Plan Exchanges

Nashville — (RNS) — The Divinity School of Vanderbilt University here will establish a student and faculty exchange program with the Graduate Department of Theology of Marquette University in Milwaukee.

Plans for the program were described by Dr. Walter Harrelson, dean of the Vanderbilt seminary, a non-denominational school.

The dean said he and Father Bernard Cooke, S.J., chairman of the Marquette department, were seeking students interested in the exchange, due to begin in the 1968-69 academic year. The degree of Master of Divinity will replace the present Bachelor of Divinity degree.

Required courses in the four traditional fields of theology education—Biblical, theological, historical and practical—will be dropped in favor of a flexible program having very few mandatory requirements.

The program is designed for "integration of the theological curriculum." Faculty will be involved both in academic instruction and preparation for the professional practices of ministry.

## New Style Movies Often Need Re-Viewing

Most viewers have taken 4½ turns about dialogue in "Planet of the Apes" (ape characters come out with such comments as "human see, human do") as a signal that the whole film is one great put-on—until the final chilling scene forces them to rethink the entire picture or, better, sit through it again for what one critic saw as its "serious moral, theological and social implications."

But where "Planet of the Apes" left off, "Space Odyssey" begins—a film that starts with "The Dawn of Man," where a colony of apes receives an apparent evolutionary message from a mysterious rectangular slab. A quick dissolve shoots the film and the audience ahead 4,000,000 years to 2001 A.D., when the same slab—or one like it—is found buried beneath the moon's surface.

The film was coolly received by critics at first, being dismissed as overly pretentious and slow-moving; there is very little dialogue, characterization or plot, or "explanation."

But as discussion about "Space Odyssey" goes on, some observers of film style are saying there are "some difficult

days ahead for middle-aged film audiences," as a writer in "The New York Times" put it. People used to the orderly, logical sequence they knew in books are going to be seeing less and less of that in films, as filmmakers adjust their style to the young audience who grew up exposed to TV images.

Audiences who grew up expecting that all sentences could be parsed and all poems scanned are slow to "read"

modern films that do away with the conventional structures they knew in earlier films. Thus the need to look at some of today's films twice.

"A second viewing," wrote "America's" Moira Walsh of "Space Odyssey," "when one already knows that the film is immersing one in an experience rather than telling a conventional story, serves to bring the movie's virtues into somewhat clearer focus."

Admitting that the time involved in a second viewing (it's about three hours long), not to mention the admission price, would make this impractical for most people, the "Newsday" critic commented about "Space Odyssey" and similar films:

"The alternative may be to find out in detail what is going to happen, so you will be less concerned with the apparent adventure and more aware of the nitty-gritty details." (Catholic Press Features)

### ST. JOHN FISHER COLLEGE Summer Sessions

**JUNE 24 to  
AUGUST 2**

Day and Evening Courses

**Registration June 21 and June 22**

#### COURSE OFFERINGS

SIX-WEEK EVENING SESSION — June 24 - August 2	Course	Sem.	Hrs.	Time	Course	Sem.	Hrs.	Time
Bio 310	Introduction to Genetics	3	6:30	8:10	Mat 352	Number Theory	3	8:20 - 10:00
Bio 401	Biochemistry	3	8:20	10:00	Phi 201	Philosophy of Man	3	8:30 - 8:10
Bus 311	Statistics I	3	6:30	8:10	Phi 202	Problems of Metaphysics	3	8:30 - 8:10
Bus 321	Marketing I	3	6:30	8:10	Phi 302	Social and Political Philosophy	3	8:20 - 10:00
Clas 303	Classical Literary Criticism	3	6:30	8:10	Phi 304	Problems in Ethics	3	8:20 - 10:00
Eco 101	Fundamentals of Economics I	3	6:30	8:10	Phy 111	Elementary Astronomy	3	8:30 - 8:10
Eco 102	Fundamentals of Economics II	3	8:20	10:00	Phy 312	Geometrical Optics	3	8:20 - 10:00
Eco 302	Money, Banking and Monetary Theory	3	8:20	10:00	Psc 201	American National Government	3	6:30 - 8:10
Edu 311	Statistics I	3	6:30	8:10	Psc 202	State and Local Government	3	8:20 - 10:00
Edu 204	Psychology of the Adolescent	3	8:20	10:00	Psy 201	Introduction to Psychology I	3	6:30 - 8:10
Edu 315	Educational Psychology	3	6:30	8:10	Psy 204	Psychology of the Adolescent	3	8:20 - 10:00
Eng 102	Major Literary Types I	3	6:30	8:10	Psy 315	Educational Psychology	3	6:30 - 8:10
Eng 103	Major Literary Types II	3	8:20	10:00	Soc 101	Introductory Sociology I	3	6:30 - 8:10
Eng 203	American Renaissance	3	8:20	10:00	Soc 102	Introductory Sociology II	3	8:20 - 10:00
Eng 204	Modern American Writers	3	8:20	10:00	Soc 215	Sociology of Youth	3	6:30 - 8:10
Eng 217	The Development of Self	3	6:30	8:10	Soc 218	Sociology of Deviant Behavior	3	6:30 - 8:10
Eng 219	Contemporary American Poets	3	6:30	8:10	Soc 223	Comparative Societies and Social Change	3	8:20 - 10:00
Eng 250	Speech	3	6:30	8:10	The 100	Biblical Introduction to Theology	3	8:20 - 10:00
Eng 321	Shakespeare	3	6:30	8:10	The 401	Social and Sacramental Dimensions of the Church	3	6:30 - 8:10
Eng 406	The Restoration and Augustans	3	8:20	10:00	The 402	Christian Morality and Contemporary Society	3	8:20 - 10:00
Fin 301	Corporation Finance	3	6:30	8:10				
Fin 302	Money, Banking and Monetary Theory	3	8:20	10:00				
Fin 402	Investment Principles and Practices	3	8:30	10:00				
Geo 221	Introduction to Geography	3	6:30	8:10				
Geo 221	Geography and Peoples of Asia and Africa	3	8:20	10:00				
His 201	United States History to 1865	3	6:30	8:10				
His 202	United States History Since 1865	3	8:20	10:00				
His 266	History of the Far East	3	8:20	10:00				
His 311	History of Canada Since 1867	3	6:30	8:10				
His 331	History of Russia	3	6:30	8:10				
Lit 103	Literature in Translation	3	6:30	8:10				
Mat 101	College Algebra	3	6:30	8:10				
Mat 104	Finite Mathematics	3	6:30	8:10				
Mat 106	Foundations of Geometry	3	8:20	10:00				

SIX-WEEK MORNING SESSION — June 24 - August 2	Course	Sem.	Hrs.	Time
Edu 211	Principles of Education	3	8:30	9:45
Act 101-2	Principles of Accounting	6	8:30	9:45 and 10:45 - 12:00

SIX-WEEK DAY AND EVENING SESSION	Day	Registration	Time
Friday, June 21	Registration	9:00 a.m. - 12:00 p.m., 1:00 p.m. - 5:00 p.m., 7:00 p.m. - 9:00 p.m.	
Saturday, June 22	Registration	9:00 a.m. - 12:00 p.m.	
Monday, June 24	Instruction Begins	9:00 a.m. - 12:00 p.m., 1:00 p.m. - 4:00 p.m., 7:00 p.m. - 9:00 p.m.	
Monday, June 24	Late Registration	9:00 a.m. - 12:00 p.m.	

Day classes are held Monday through Friday. Evening classes are held Monday through Thursday.

**For Further Information: DIRECTOR OF ADMISSIONS,  
ST. JOHN FISHER COLLEGE • 3690 East Ave., Rochester 14618  
Phone (716) 586-4140**

SINCE 1852  
"YOUR INDEPENDENT AGENT"  
**EGBERT F. Ashley Insurance**  
300 FIRST FED. BLDG. Phone 546-2620

**GRAND OPENING OF  
Winton Wigs (Robert "G" Wigs)**

692 WINTON RD. COR. MAIN ST. E.  
ALSO FEATURING **Opening Special**  
A COMPLETE LINE OF **MEN'S HAIRPIECES**  
FOR APPOINTMENTS CALL 288-0534  
Free Parking Opposite Studio  
Member Marine Midland 100% Human Hair **WIGS \$5250**  
10-8 Daily - Sat. 11-5 Plus Tax  
OTHER LOCATIONS: Wigs-A-Reno, 158 Lyell Ave., 254-5047; Ro-Jer's Beauty & Wig Salon, 699 1/2 Thurston Rd. Complete With Case Cut - Styled and Fitted

**Mother-to-be Maternity Shop**  
Spring into Summer  
**BONUS GIFT** with this ad one pair of Nylon or Cotton PANTIES with your purchase  
Exclusive but not expensive. Where the red carpet treatment awaits you.  
Phone: 227-3710  
Mother-to-be MATERNITY SHOP  
GREECE TOWNE MALL  
Ridge Rd. West

Outdoors on a typical Canadian lake

**A great Canadian now imported to Rochester**

Smooth as her placid lakes—a superb whisky in the Canadian tradition of excellence. Royal Canadian is an adventure in good taste—royal taste. Now imported in barrels, bottled in the U.S.A. to save money on taxes and freight—priced for everyone. Try it!

**Royal Canadian**  
IMPORTED \$5.39 FIFTH  
BLENDED CANADIAN WHISKY  
Blended Canadian Whisky—80 Proof—Imported by Jas. Barclay Importers, Detroit, Michigan.

HOFFMAN MUSIC SHOP IS OPEN DAILY TO 9-WED. & SAT. TO 6 FOR YOUR SHOPPING CONVENIENCE

LET HOFFMAN HELP YOU PLAN NOW FOR A COOL SUMMER AHEAD

Don't Be Switched . . . Buy Famous Chrysler Airtemp

# AIR CONDITIONERS

. . . A SIZE FOR ANY ROOM . . . PRICED FOR EVERY BUDGET!

**BEFORE YOU BUY . . . READ THIS AIR CONDITIONER CHECK LIST!**

- 1 POWER**—more power to cool—faster! Dependable power that circulates cool air into every corner.
- 2 EFFICIENCY** that lives up to specifications. Delivers perfect BTU performance.
- 3 ENGINEERING** that means years of trouble free service.
- 4 QUIET** is at the very maximum. An indication of fine design and insulation.
- 5 DIRECTION** of air can be completely controlled. Prevents drafts and achieves perfect circulation.
- 6 RUST RESISTANCE** to prevent deterioration of outside casing in any weather.
- 7 INSTALLATION** is easy. No special tools are required to achieve perfect fit.

**Airtemp**

**The Airtemp Tempette Bedroom Air Conditioner**  
5,000, 6,000 and 7,000 BTUs.

**The 'Teton' For Homes, Offices, Shops,**  
18,500 thru 35,000 BTUs.

**The 'Custom' Model With Thermostatic Operation**  
8,000 to 17,000 BTUs.

**Airtemp 'Freeway' Fits Horizontal Slide Windows**  
2 Models: 5,800 and 9,000 BTUs.

**Casement Model**  
5,600 and 7,300 BTUs.

**Imperial Model**  
HO7-81, 6,500 BTUs.

**NO MONEY DOWN! TAKE UP TO 3 YEARS TO PAY**

**Hoffman MUSIC SHOP**  
phone: 454-5645 • 454-5646  
**467 N. GOODMAN ST. AT EAST MAIN ST.**

**TRANT'S**  
CHURCH SUPPLIES AND RELIGIOUS ARTICLES

**vacation time is here . . .**

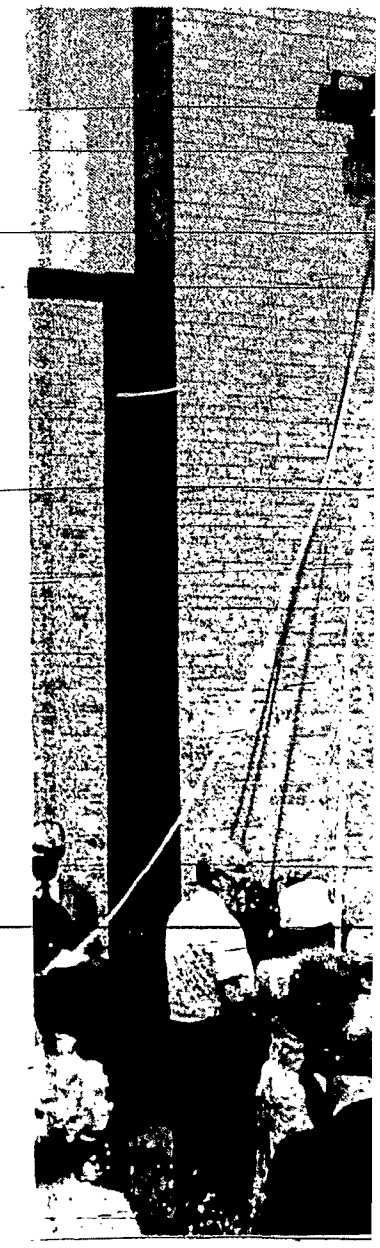
Have a safe & enjoyable one. Here are a few suggestions we feel you'll want to consider for your trip or camp sojourn.

- Medals • Chapel Veils
- Missals & Prayer Books
- Auto pins & statues
- Summer Reading

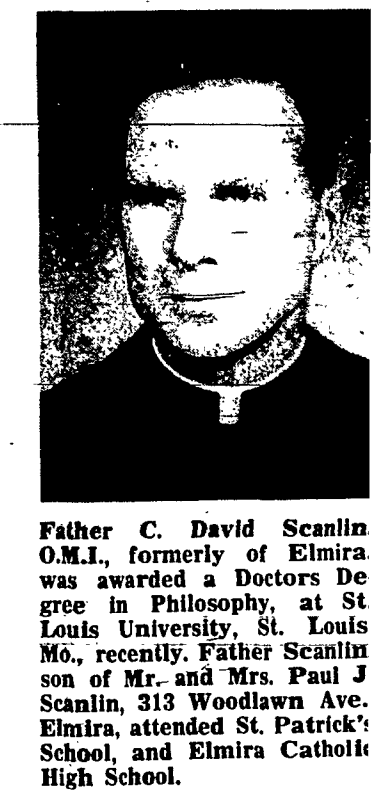
**TRANT'S** 96 CLINTON AVE. N. 116 FRANKLIN ST. Phone 454-1818  
CHURCH SUPPLIES AND RELIGIOUS ARTICLES  
OPEN DAILY from 9 A.M. to 5:30 P.M.  
THURSDAY Evening 'til 9 P.M.



Graduates pose with Bishops last Sunday-Christina



Rev. Emile Sharaneyv burn blessed the new parishioner, Mrs. Kath held ribbon



Father C. David Scanlin O.M.I. formerly of Elmira was awarded a Doctors Degree in Philosophy at St. Louis University. St. Louis Mo., recently, Father Scanlin son of Mr. and Mrs. Paul J. Scanlin, 313 Woodlawn Ave. Elmira, attended St. Patrick's School, and Elmira Catholic High School.

**Money Woe May Disband Student Uni**

Washington—(NC)—After 10 years of operation the National Federation of Catholic College Students now is in dire financial difficulties and may disband.

Msgr. Thomas J. Leonard, director, Youth Department, U.S. Catholic Conference, confirmed the dismal NFCCS situation but said "it is too early now to say whether the organization will be disbanded." He said definite decision will be made before August.

The NFCCS, the Newman Student Federation, which disbanded a year ago, and the flourishing National Catholic Youth Organization Federation may join the National Council of Catholic Youth under the banner of the USCC Youth Department.

Once active in more than 100 Catholic colleges and universities, the NFCCS fostered Catholic action work among students. Since the early 1960s interest in NFCCS has waned as students chose to identify themselves with other student government organizations.