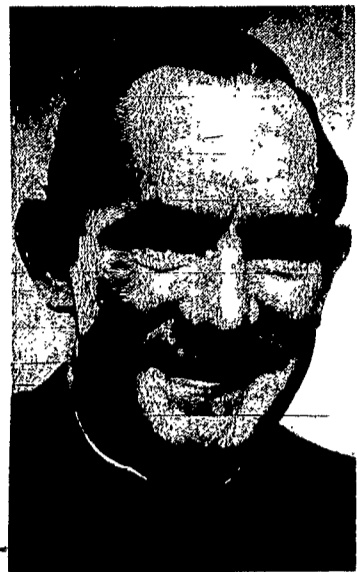


### Father Heanue Posted To Retreat House

A Redemptorist priest with wide experience in the radio and magazine field has joined the staff of the Notre Dame retreat house on Canadigua Lake.

Father William Heanue, S.S.R., has been appointed to the retreat staff, replacing Father Donald Fearon, CSSR, who has been assigned to parish work in Lima, Ohio.

Father Heanue comes to Canadigua after seven years as parish priest in Lima, Ohio. His previous assignments include two years of teaching at the Redemptorist Minor Seminary at North East, Penna., and ten years parish work in Bronx, New York.



FATHER HEANUE

A veteran of eighteen years' preaching weekly Novena Devotions to Our Lady of Perpetual Help, his work included ten years of broadcasting the Radio Novena in New York. A contributor to Catholic magazines, his work has appeared in *Liguorian*, *Marriage*, *Sacred Heart Messenger*, *Perpetual Help World*, *Our Sunday Visitor*, and *Family Digest*.

Father Heanue will be joining Fathers Gerald Whelan, C.M., "Hiram" and Richard Moran in weekly retreats for men, seminarians for college and high school students, and the extensive preparations being made at Notre Dame Retreat House for the Cana Weekend for married couples to be held March 15-17.

#### Card Party

The annual pre-Lenten Card Party, sponsored by the Christian Mothers' Society of St. Patrick's Church, Elmira, will be held in the Parish Hall Mon., Feb. 26, at 8 p.m. Chairman is Teresa Reedy.

**S. D. LUNT & CO.**  
Members New York Stock Exchange  
Assoc. Members Amer. Stock Ex.

- \* BROKERS AND DEALERS IN LISTED AND UNLISTED SECURITIES
- \* WESTERN N.Y. INDUSTRIES
- \* COMPLETE TRADING FACILITIES

WILLIAM E. SECOR  
Phone 232-4084  
1414 Lincoln Roch. Trust Bldg. Rochester, N.Y. 14604

### Christ Church Choir Presents 'Jazz Mass'

The "Jazz Mass" by Vince Guaraldi will be performed in concert March 3 at St. Michael's Church, 869 Clinton Ave. North, by the Christ Church Cathedral Choir, under the direction of Canon Cyril Roberts, and with the accompaniment of piano, bass and drums.

The performance, open to the public, will begin at 4 p.m.

The concert is sponsored by the Music Commission of the Diocese of Rochester to acquaint the public with new modes of musical expression for worship. In the Guaraldi "Mass," the choral parts are in the conventional chanted idiom, while the instruments supply an intricate and highly embellished jazz accompaniment.



### Anniversary Dance

Catholic Alumni officers plan first Anniversary Dance for Feb. 25 in the Red Lion Room of the Powers Hotel. Shown here are John Roche, Myra Kahler and Robert Blantz.

#### The Association

The Association, top singing group that played to a capacity house at the Eastman last October will return Sun., March 10 for one night only, announces the Civic Music Association.

### Nun Born Here Marks Century

A Webster native who went west with the Sisters of St. Joseph in 1890 celebrated her 100th birthday this month in Kansas.

Sister M. Regis Schwenzer attended Mass, as she has done every day for 78 years.

Her relatives here gathered for a Mass celebrated by Father John T. Reif, a grand-nephew, in the home of his parents, Mr. and Mrs. Raymond P. Reif.

Sister Regis was born Feb. 9, 1868, in Webster, and christened Anne Schwenzer. She was the youngest of eight children born to Valentine and Barbara Schwenzer. In 1890 she joined the St. Joseph nuns from Rochester who had established a mission in the Diocese of Concordia, Kansas. She lives at St. Mary's Convent, Concordia.

### Ave Maria Studio

RELIGIOUS ART CENTER • ALL YOUR DEVOTIONAL NEEDS FOR THE LENTEN SEASON!  
DAILY 11 to 4 • 696 Park Ave. near Berkeley

### Masons Attend K of C Mass

The Gleason branch of the Knights of Columbus held a memorial Mass for deceased Masonic organization members at St. Mary's Church recently. 20 members of the Gleason Masonic organization were guests.

**MOVING?**  
Let Us Help . . .  
Whether the move is direct, or storage of all your belongings is needed, our experienced men, large facilities are ready to suit every need.

Call Bob Bennett for a Free Estimate!  
**B. G. Costich & Sons Inc.**  
MOVING — 454-4870 — STORAGE

**JOSEPH VALONE ANNOUNCING**  
Grand Opening of  
**LYELL GATES CARPETS**  
2284 LYELL AVE.  
RESIDENTIAL • 254-2975 • COMMERCIAL  
Open Mon. 12-1 Tues., Wed., Thurs., Fri. 10-9 Sat. 10-6  
AS A GRAND OPENING SPECIAL, Mr. Valone will completely install a 9 x 12 Hercules carpet in your kitchen absolutely FREE! Register now for drawing Sat., March 9. Adults only.

Name \_\_\_\_\_  
Address \_\_\_\_\_  
Tel. Number \_\_\_\_\_

SOFT AS A KISS

**INVER HOUSE** IMPORTED RARE SCOTCH  
100% MEDIUM GRAIN WHISKY CREAMY FINISH IMPORTED BY WALTER HEISS, DISTILLERS, LTD., ST. LOUIS, MO.

Shake hands with the banker who agrees with you that the "normal" cost of a car loan is too high, and that advertised "rates" are sometimes misleading.



Shake hands with your Corning First National Banker, who did some thing about the problem.

A SPECIAL SERVICE AND A SPECIAL RATE FOR DEPOSITORS  
ARRANGE YOUR LOAN IN ADVANCE, AT THE BANK  
AS A DEPOSITOR, YOU CAN SAVE LITERALLY HUNDREDS OF DOLLARS ON A CAR LOAN AT CORNING FIRST NATIONAL!

How would you like to save money — real money — when you finance your next car? Your Corning/FIRST NATIONAL banker can show you the way. He offers depositors new car financing at \$4.50 per \$100 per year. This is an effective annual rate of 8.4% when figured on the unpaid balance.

Loan Cost Per \$100 Per Year	This Is The Rate Offered By Corning-First National	If charged on an "ADD-ON" basis the true annual rate of interest is:	If charged on a "DISCOUNT" basis the true annual rate of interest is:
\$4.50	This Is The Rate Offered By Corning-First National	8.4%	9.67%
\$5.00	THESE ARE RATES Often Referred To As "5%", or "5 1/2%", or "6%" or "7%" loans. They are sometimes even called "low bank rates." Obviously, they are much higher than the rate offered by Corning First National	9.3%	10.88%
\$5.50		10.2%	12.11%
\$6.00		11.08%	13.38%
\$7.00		12.8%	16.1%

HOW THIS RATE WORKS  
You can figure it out yourself: the interest you pay is only \$4.50 a year on each \$100 you borrow. For example, on a \$2,000 loan for 36 months, your interest payments would total \$270.00. You repay interest and principal at a monthly rate convenient for you — providing the loan is paid up within 36 months. (If you are not already a Corning/FIRST NATIONAL depositor, you may want to become one right now, so that you can benefit from this low rate, offered exclusively to depositors.)

FIRST NATIONAL car loans are not available at your dealer's showrooms. Other types of financing plans may be available "on the lot," but these cost you more interest — New York State law allows up to \$7.00 per \$100 on new cars. (And up to \$13.00 per \$100 on used cars!) Both of these rates are substantially higher than the rate offered to you by Corning/FIRST NATIONAL.

**FIRST NATIONAL BANK AND TRUST COMPANY** • **CORNING, NEW YORK**  
MEMBER FEDERAL RESERVE SYSTEM • MEMBER FEDERAL DEPOSIT INSURANCE CORPORATION

\*\*\*\*\* We Give "S.&H." Green Stamps \*\*\*\*\*

**REMODELING**  
FREE ESTIMATES • NO OBLIGATION • NO MONEY DOWN  
FIRST PAYMENT JULY '68--ALL WORK AT ONE LOW PRICE

**ADDITIONS AND RECREATION ROOMS**  
Expand or Convert Your Present Home to Fulfill Your Needs  
— WE HAVE A COMPLETE SERVICE AVAILABLE —

FOR YOUR PROTECTION we suggest before you SIGN any contract for Home Improvements be sure to check the Company's reputation.  
WRITTEN WARRANTY ON EVERY JOB—FULL INSURANCE COVERAGE

**GENE W. DICKINSON**  
REGISTERED & APPROVED CONTRACTORS  
385 WINTON RD. N. 288-1630

\*\*\*\*\* We Give "S.&H." Green Stamps \*\*\*\*\*

Winners  
John Reinhardt II  
Father Francis Taylor, left, beams pride

**COU**

May we ask completing the...  
vey. This sur...  
measurably in...  
completing me...  
advertisers. M...  
you know, m...  
and a more c...

WE BUY...  
D...  
S...  
M...  
P...

Store location

WE BUY...  
D...  
S...  
M...  
P...

Store location

WE BUY...  
D...  
S...  
M...  
P...

Store location