

SO NICE TO HAVE AROUND THE HOUSE!

PITTSFORD BEVERAGES

SOFT DRINKS


CASH 'N CARRY AT THE PLANT
OR ORDER

A CASE FROM YOUR ROUTE MAN


PITTSFORD BEVERAGES

144 HUMBOLDT ST. HU 2-9583

CLOSED MONDAYS



You Really
Should...



VISIT Our new little shop. You'll find a wealth of truly distinctive gifts from 'round the world. Many exclusive items—at sensible prices. You can use your Midland Charge and there is street parking or at Atlantic station cor. Berkeley.

DISCOVER The beauty of Christian art... Candles of charm including Christ and Mary Candles... Rosaries from simple olive beads to semiprecious stones... Statues genuine hand carved or original ceramics... Nativity Sets many to choose from—Medals Bronze, silver, gold, hand cast originals hard to find joints. Books carefully chosen for discerning readers.

LOOK over our fabulous collection of better quality CHRISTMAS CARDS—traditional and religious theme—boxed assortments or bulk—Order Now with your personal imprint and send them with pride.

For Gifts Remembered—Our Label is a sign of your Good Taste

ARLYNE WEIDER'S

Ave Maria Studio

RELIGIOUS ART CENTER

Phone 244-6290

696 PARK AVENUE

Near Berkeley

Give them the gift of health during this Christmas season



For every dollar you can send \$25 worth of medicines to the sick and poor

Throughout the world, more than 5,000 mission hospitals, dispensaries and clinics depend on the Catholic Medical Mission Board for the medical supplies they need to treat the sick and poor. It takes money to provide these essential materials. It's money well spent. Our records show that for every dollar we receive, we donate \$25 worth of medicines and equipment.

Since 1928, CMMB has been performing this vital work of mercy — and other services as well, all made possible only through generosity. Doctors and other medical personnel volunteer for duty at the missions. Physicians and dentists contribute good used equipment. Our 3,000 ladies' Blue Cross Circles contribute handmade dressings and bandages.

To move these life-giving supplies to the sick and poor who urgently need them, we must depend on your generosity, for your contributions are our only source of funds.

Won't you help by returning the coupon below with your contribution? No matter how small or large it is, it will be multiplied 25-fold.

CATHOLIC MEDICAL MISSION BOARD Dept. P
10 West 17 Street • New York, New York 10011

Enclosed is my Christmas Gift. Please multiply it 25 times for the sick and needy.

Please send a free leaflet describing your work.

NAME _____

ADDRESS _____

CITY _____ STATE _____ ZIP NO. _____



Sister Joseph Eileen puts a bonus question to the Junior Class team in St. Agnes High School's recent "College Bowl" competition. Seniors (Callista Card, Laurie D'Angelo, Juliet Fischette, and Mary Rafalowski) defeated the juniors 310 to 250. Assisting Sister Joseph Eileen are Sharon Federation and Beverly Dinino, president and vice president of the Student Council.

'College Bowl' Competition
Mind vs. Time at St. Agnes

In what century was Henry IV king of France, Charles V Holy Roman Emperor, and Henry VIII king of England? Who is the sculptor of Chicago's new and controversial sculpture most probably signifying "woman"? What two countries have quarreled over control of Kashmir? Alsace-Lorraine? Cyprus? Trieste? If x plus 3 represents an even number, does x plus 5 represent an even or an odd number?

In how many seconds could you have answered each of these? Pitting their intellect and nerves against those of their opponents in a fray modeled after TV's fast-moving "College Bowl," St. Agnes High School's juniors and seniors provided the answers in (literally) seconds flat.

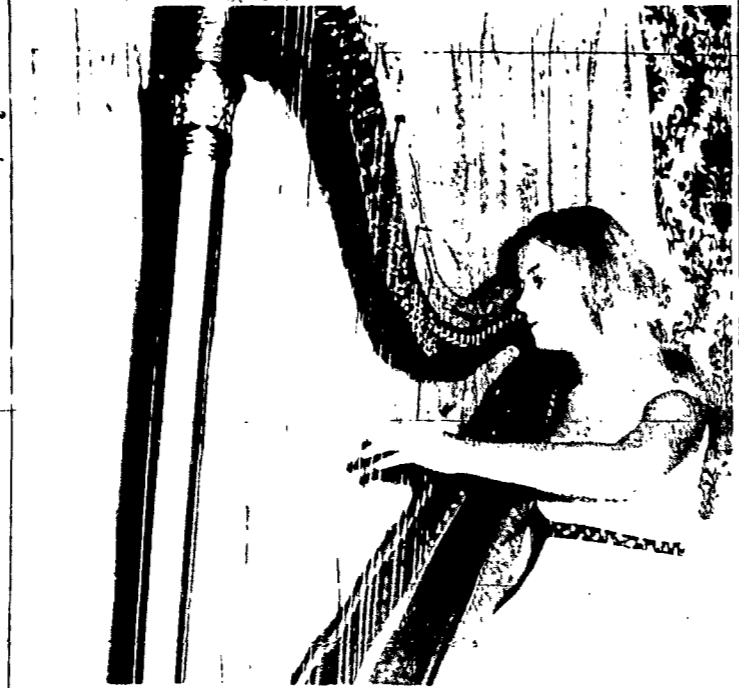
The contest, held during an all-student assembly recently, was unique in that it aroused competition within a purely academic sphere. Knowledge and learning became a much-coveted possession as the Senior Class defeated the Junior Class 310 to 250.

The program was organized by Sister Josanna and Miss Margaret McMahon, moderators of the Student Council, and Student Council officers and representatives. Moderating the event was Sister Joseph Eileen, former teacher at St. Agnes, who is currently a member of the History Department of Nazareth College.

The Senior team, captained by Juliet Fischette, also included Callista Card, Laurie D'Angelo and Mary Rafalowski. Junior captain was Christine Ryan, with teammates Susan Buben, Susan Smith and Maureen Wallace.

'Death of God'

"The Death of God" issue, a current theological controversy, will be debated Sunday, Dec. 10, 8 p.m. at the JYM&WA, 380 Andrews St.



In All State Concert

Roxann Roth, 96 Northfield Rd., a senior at Nazareth Academy and a member of the school orchestra, will play the harp in the All State Concert Wed., Dec. 6, at the Concord Hotel, Lake Klamath, N.Y. The concert is a feature of the New York State Music Association Convention at Lake Klamath. This is Roxann's second appearance with the All State Orchestra. She has also played in a number of State Sectional Festivals.

Slide Narration

Stories about the people and places in Egypt will be given by Charles L. Rumrill in his color slide narration at Rochester Museum of Arts and Sciences, Dec. 6, at 8:15 p.m.

TEMPORARY OFFICE HELP!

IMMEDIATE OPENINGS

ROCHESTER • CHILI WEBSTER • HENRIETTA and PITTSFORD

TEMPORARY OFFICE HELP IS NEEDED!

IF YOU CAN . . . TYPE WE NEED YOU "NOW"!!!

INTERVIEWING DAILY AT S. O. S. OFFICE

S.O.S.

2690 St. Paul Blvd. 266-2735

LEONA S. THOMAS

Rochester's First Temporary Agency, Rochester Owned and Operated

Fisher Slates
Open House

An open house for high school Juniors and Seniors and their parents will be held at St. John Fisher College Tuesday, Dec. 5.

Guided tours of the Fisher campus will be conducted from 7 p.m. to 7:30 p.m. starting from the Student Lounge in Kearney Administration Building.

At 8 p.m. a brief welcome and orientation talk by members of the Fisher Admissions Department staff will be given in Kearney Auditorium, followed by classroom information sessions with members of the college faculty. At these informal sessions students and parents will have the opportunity to ask questions about the various fields of study and courses available at Fisher.

DEADLINE FOR NEWS
MONDAY NOON
FRIDAY DELIVERY

ALWAYS PLENTY OF . . .

WIGLETS from \$15.00
WIGS from \$29.00
FALLS from \$45.00

FREE ADVICE

In fact, we have brought in an expert, Mr. JOSEPH, directly from a leading fashion salon in Belgium. Just to give you advice in wiggy and beauty—Monday and Tuesday only.

"There is no substitute for quality and experience."
24 Years in the Business
GIVE AN XMAS GIFT CERTIFICATE FROM

Midtown WIG STUDIO

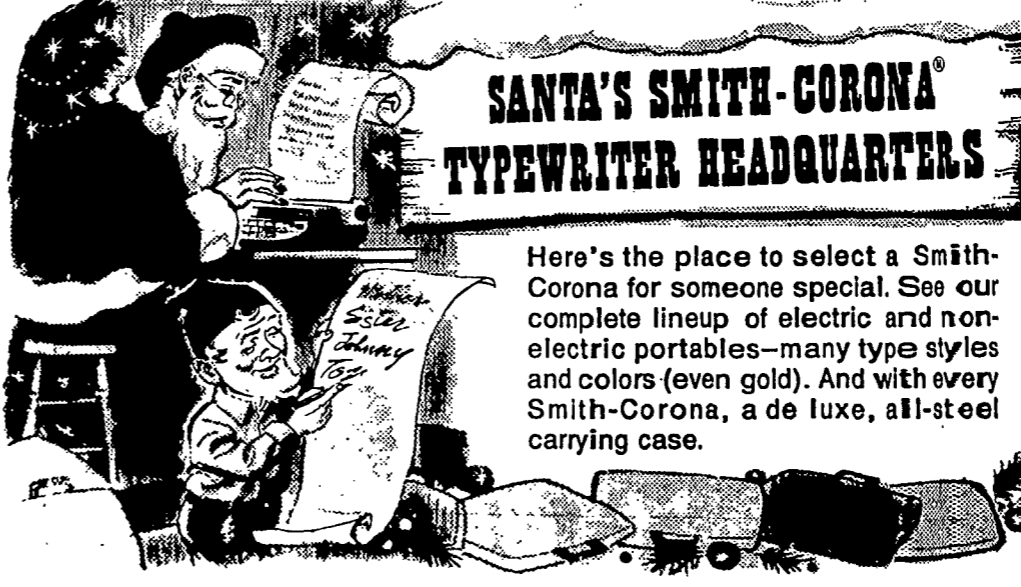
1530 MONROE AVE. 442-1145 MIDTOWN ARCADE 546-1510



SCHOOL NEWS

SANTA'S SMITH-CORONA
TYPEWRITER HEADQUARTERS

Here's the place to select a Smith-Corona for someone special. See our complete lineup of electric and non-electric portables—many type styles and colors (even gold). And with every Smith-Corona, a de luxe, all-steel carrying case.



GALAXIE II by SMITH-CORONA

THE PERFECT PRESENT... WITH THE MOST WONDERFUL FUTURE

The Galaxie II is the world's latest non-electric typewriter. It keeps up with speedsters, but makes learning a breeze. Stylish, too, in many new colors (even gold), with colored platen and cushioned line-space lever to match. Handsome, vinyl-clad steel carrying case.

CHANGEABLE TYPE™, a new dimension for your keyboard. Up to 40 inexpensive (optional) characters that snap on to give you accents, signs, symbols for math, science or languages.


JEWELLED MAIN BEARING™ to insure long-lasting, factory-new precision and performance.

SO MANY GREAT FEATURES... try them and see why people buy more Smith-Corona portable typewriters than any other.

L. W. HASTINGS

Dial RE 2-3944 211 State St. Elmira

An educator-approved Smith-Corona Touch Typing Course, too, at special savings when you buy a Smith-Corona.



NOW OPEN!

Marine Midland
1968 Christmas Club

You can make Christmas shopping easier next year by joining Marine Midland's 1968 Christmas Club now! Your Christmas Club checks allows you to shop early while the choice of gifts is good and the crowds are still small. You won't have to worry about paying Christmas bills in January or February either.

Look ahead to next year and decide on the amount of Christmas cash you'll need next November. If it's \$100, join the \$2 Christmas Club for 50 weeks. If you'll need \$250, join the \$5-a-week Club. You have a choice of several other Marine Midland Christmas Clubs from \$1-a-week up to \$20-a-week.

Make it easier on yourself next year. Join Marine Midland's 1968 Christmas Club this week and enjoy the merriest Christmas ever!



MARINE MIDLAND TRUST COMPANY
OF SOUTHERN NEW YORK

Member Federal Deposit Insurance Corporation

19 Banking Offices Serving The Southern Tier

S PA

Lively Sw

The G Model A 71 Sq. in. rectan

NEW VALU RCA VICTOR

This sprightly 8 lightweight. Flex tonans. 13,000- and 3" speaker. values we've ev

FR

Sim BEA

Stretch your sleep! We'll make it easy stretcher rails or ste Super size set.

Beautyrest's indepe body-fitting support! Now get the extra up to 54% m

We'll Make a Super St! At no

Long Boy...Balls or Frame Free of Cost

HURRY, OFFER LIMITED

Beaut Long Boy Twi

5 inches long standard. If over 5'10", yc a Long Boy set \$

MC 9