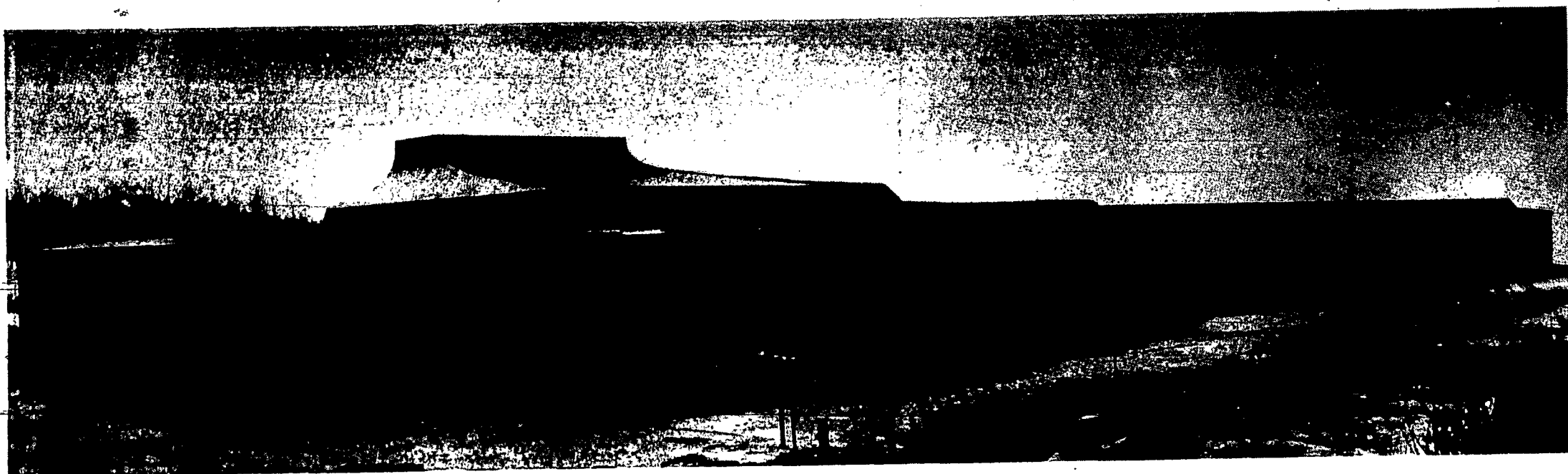




Nazareth College

OF ROCHESTER



Panoramic view shows entire Arts Center complex. At left is music wing, auditorium wing with high roofline rises in left background and art wing is glassed area in right foreground.

Art Center Wins Design Award

This past fall, the new multi-level Arts Center, which is in the final stages of construction at Nazareth College, was named winner of an Honor Award in the annual Design Award Program of the Department of Health, Education and Welfare.

Sister Helen Daniel, president of Nazareth College, received the award from Commissioner of Educa-

tion, Howard Howe II, in Washington, D.C.

Members of the American Institute of Architects and the Educational Facilities Laboratories collaborated with the Bureau of Higher Education to select the winners from 258 entries.

The Arts Center is to be formally dedicated in

October, 1967. Architects for the Arts Center are Giffels & Rossetti, Detroit.

The new complex is part of an expansion program for the 40-year-old college. Nazareth facilities are being prepared for an expansion from the present 1,160 full-time students to 1,500 by 1970.

All Three Wings of Arts Center to be in use this September

If the good weather holds, and barring unforeseen construction difficulties, the entire Arts Center complex will open for use as scheduled for the fall semester of 1967.

This facility is the most complete of its kind in this section of the country. It will allow Nazareth to attain national leadership in arts training and correct a vital need for administration space. The Arts Center will be related to the older college buildings and their modified Gothic design, by use of the tapestry brick in broad-simple surfaces. The limestone trim of the present buildings is reflected in the sensitive use of pre-cast concrete members of the new Arts Center buildings. The entire, roughly u-shaped complex will be fully air-conditioned.

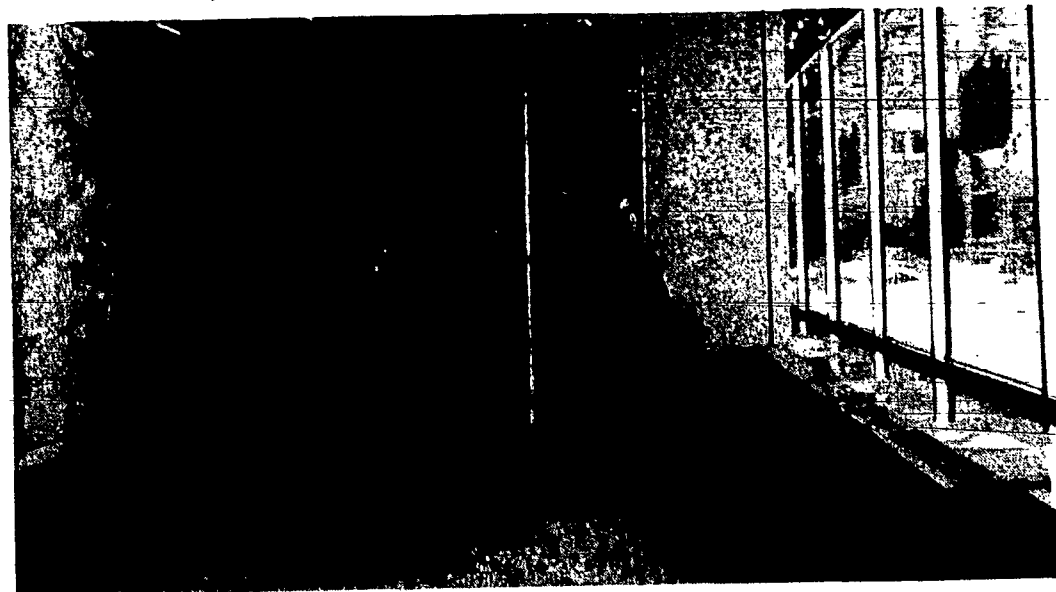
To the visitor, the center of attraction and largest

structure of the Center is the 1,100 seat auditorium. Its fixed seating arrangement, almost 180 degrees around the stage, and its absence of a central aisle gives it some of the features of continental seating. A ceiling of floating acoustical panels and angled walls of fabric and wood provide effective acoustical control. The large 52' stage projects out into the audience a depth of 36 feet. In addition to having complete projection booth, and an adaptation for closed circuit TV, the auditorium contains two smaller meeting rooms, speech therapy clinic, seminar room and six faculty offices.

A large dual purpose rehearsal room in the auditorium wing has a stepped side for choral rehearsal which can be closed off for either drama or orchestra rehearsal.

The two-story Music Wing in the center of the complex can be entered from the art wing or auditorium on its upper level, or at grade on the lower level. The fully carpeted wing contains the music classrooms, seminar rooms, and fourteen individual practice rooms with non-parallel walls. Five office studios for the music faculty are separated from the classroom area by the centrally located hi-fidelity listening room.

The Art Wing will contain north-lighted studios for ceramics, sculpture, wood, metal, painting and drafting. This wing will also feature a design studio, darkroom, exhibition room and a departmental office. The lower level of this wing will house the graphics studio, seminar room and the mechanical equipment room.



Sr. Marie Angela and students tour art wing. Administration building can be seen through glass at right.



Teacher and students appear delighted with facilities in partially finished art wing workshop.