

JOINT COLLEGE FUND Progress Report



DIOCESE OF ROCHESTER

MOST REV. FULTON J. SHEEN, Ph.D., D.D., BISHOP

MARCH 10, 1967

JCF Pledge Payments Matching Construction Pace



Otto A. Shults
JCF Board Chairman

JCF Board Chairman, Mr. Otto Shults, CPA, reports that the payment of pledges to date is most gratifying.

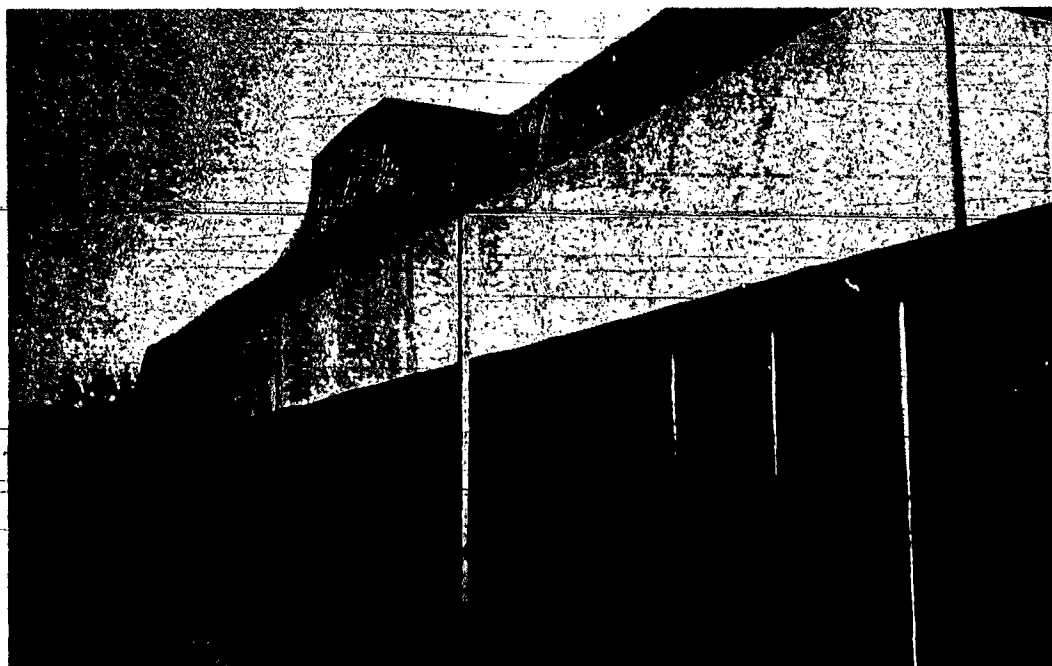
Mr. Shults stated that the bar graph below illustrates the percentage of payments received from the various campaign divisions for the first thirteen months. Although the results are encouraging, they are very necessary, due to the ambitious building program on the campuses in Pittsford and Fairport. He emphasized the point that the entire complex will cost \$3 million more than the \$10.5 million pledged in 1965. The difference is to be made up through long-term, low-rate loans from the federal and state housing authorities and from possible federal grants

under the Higher Education Facilities Act.

The chairman complimented the parishes especially, because, of the entire pledged amount, 61% came from the parishes in the November campaign. Largely through the efforts of the pastors, moderators and their follow-up committees, the parishes have now given the institutions more than 3.5 million dollars, or 54% of the Parish Division pledged total. Mr. Shults stated that this was exemplary and felt confident that the parishes would continue to set this pace.

In noting the Major Gift, Commerce and Industry and Corporate Division accomplishments of 48%, 72% and 28% respectively, Mr. Shults pointed out that these achievements were all the more noteworthy inasmuch as a large amount of these pledges are deferred over as long a period as ten years.

The alumni, faculty and staff totals of Nazareth as 59% and St. John Fisher as 43% to date do not reflect the true accomplishments of these committees, because the majority of these pledges have been transferred to the parishes for collection and are not reflected in these percentages. The JCF Board Chairman concluded by stating that the Fund has now received from all pledgors \$5,077,826.86, of which 4.4 million has been disbursed to the colleges to pay construction costs. The next disbursement is scheduled in April, 1967.



Workmen apply finishing touches to exterior of new auditorium wing at Nazareth College.



Wide angle lens gives complete perspective of interior of Becket Hall Chapel. Construction is in near stage of completion.



Footings and walls rise rapidly for new Science Building at St. John Fisher College. Administrative building is in left background.

Graph Chart of JCF Pledge Realization, by Divisions as of January 31, 1967

