



School nurse at Immaculate Conception giving out Polio vaccine to first-graders (on sugar lumps).



Sister Cyell, S.S.J., Director of Diocesan Rochester Inner City Program, has an on-the-spot visit with one of youngsters under her care.



Miss Mary Plizzo, lay teacher at St. Bridget's with some of her second-graders (working math at flannel board).

## The Church in Rochester's Inner City

What's the Catholic Church doing in Rochester's inner city?

Actually it's been there long before the area was even called "the inner city" with all the overtones those words today imply.

As special needs became evident in recent years, a new program was designed and is now in operation.

Under Monsignor William M. Roche, superintendent of schools for the Diocese, a special program began this past September, headed by Sister M. Cyril, S.S.J., who was appointed supervisor of the five "core" and six "fringe" schools of Rochester's inner-city, and of comparable schools in Geneva and Elmira.

This program involves special teacher training and special curriculum development based on the specific needs of the children in these areas. In addition, there are two "home visitors" who help to make contacts between the parents of these children and their teachers and pastors.

Each school, besides the general needs springing from poverty, racial discrimination, and often a background of illiteracy and distrust of authority, has its own specific problems which it strives to meet in various ways.

Immaculate Conception and Mt. Carmel schools both have kindergartens—particularly im-



Sister Valeriana, F.S.S.J., teaching first-graders at St. Theresa's School.

portant for children from these areas; also ungraded classes to help each pupil work at his own pace, and a home-visitor. A nun manages a "clothes room" in addition to other contacts with the parents.

St. Bridget's School has a full-time social worker from the Catholic Family Center. St. Lucy's School has sent its few pupils from grades 5 through 8 to nearby Immaculate Conception School and St. Peter and Paul's School to concentrate its facilities and personnel on grades kindergarten through 4.

The faculty at St. Theresa School possess a great advantage in coping with one of the problems plaguing many of these schools—the foreign language barrier. All of the Sisters at St. Theresa's understand and speak Polish, the tongue spoken almost exclusively by one-third of their students. Many of the teachers in the schools where Spanish or Italian is the second or only language of many of the children and parents do not have this advantage.

In-service training is constant among the faculties of the inner-city. This includes lectures, films, classes, meetings, discussions, and consultations.

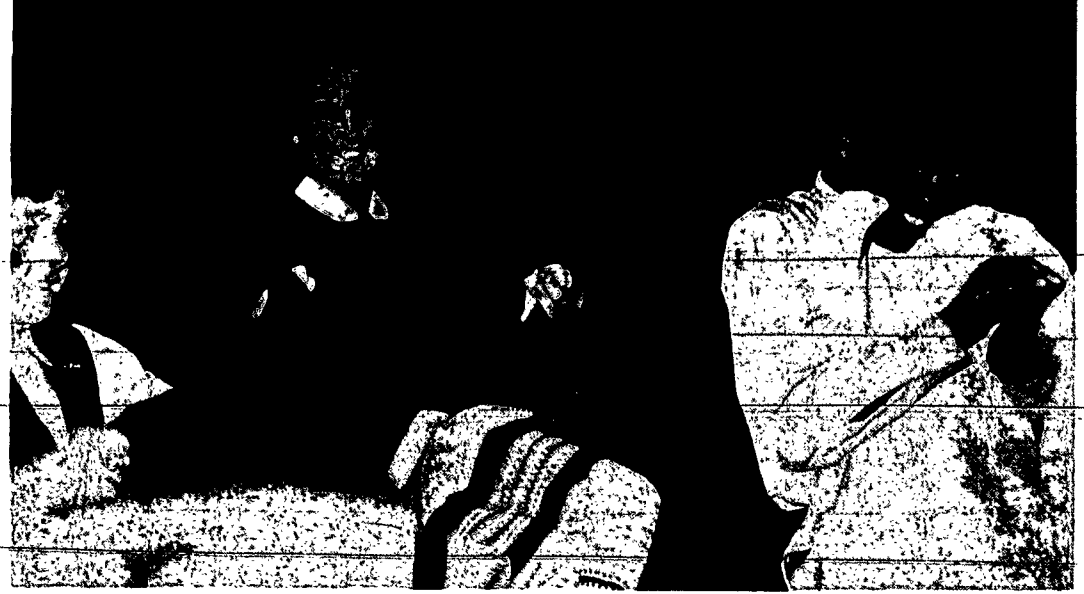
Since the diocesan inner-city program is not connected with ABC (local unit of the War against Poverty) or any other government agency, it has no source of income at its disposal. Much of its effectiveness comes from the volunteer help of the nuns from the various participating communities who give time after their regular day's work to do home visiting, teach remedial reading, singing, and art; and proctor evening study halls; seminarians and Nazareth College students who teach catechetics; lay women who act as drivers, collect clothing, and are now taking instructions at the Rundle Library to be able to work in the forthcoming bookmobile.

This bookmobile, as well as other equipment and the services of specialists in speech, reading, art, etc., should be available this month to all inner-city children under Title I of the elementary and secondary education law of 1965. The coordinator of these facilities for the diocesan program is Mr. William Paradise who works out of the Catholic School's Office.

Some of the plans for the future of the diocesan program, according to Sister Cyril, include hot-lunches; preschool classes; more home-visitors and supervising principals; more teachers; and further curriculum revisions.



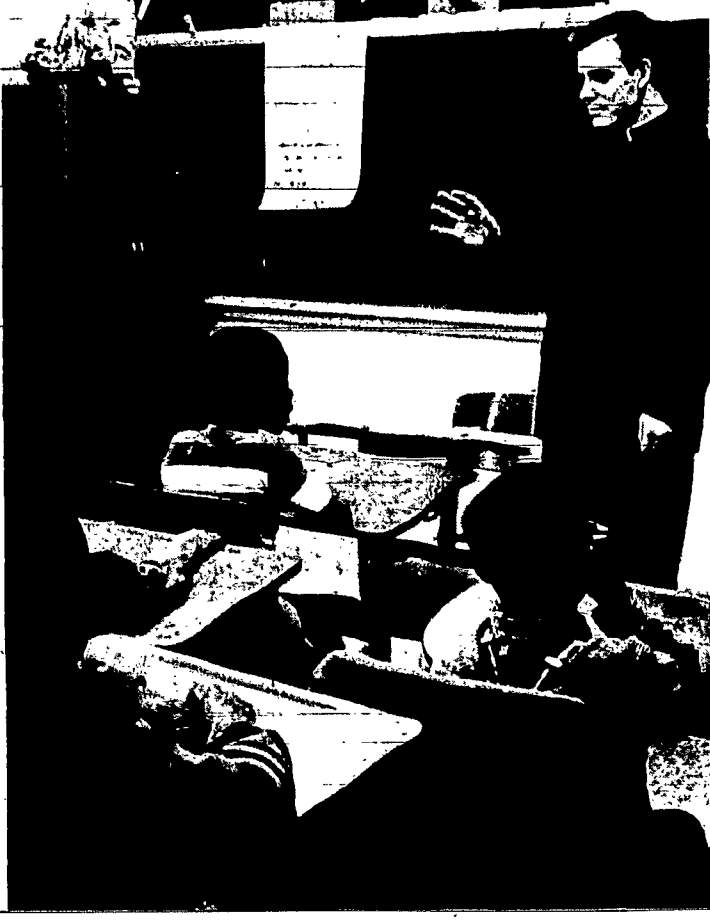
Sister Bernard Marie, S.S.N.D., at St. Michael's with reading group of first-graders.



Sister Marie Michael, M.S.B.T., in clothes room at Immaculate Conception.



Sister James, S.S.J., home visitor stationed at Immaculate Conception School makes friends at the home of one of the parishioners.



Seminarians in after-school catechetics class at St. Bridget's (on his free afternoon).

### Family Rosary Radio Leaders

The Family Rosary for Peace is broadcast nightly at 7 p.m. by Rochester's radio station WSAY, Auburn's WMBO-FM, and through the facilities of the TV cable companies in the following cities: Elmira (Channel 8), Hornell (Channel 5) and Corning at 88.75 M.C.

Friday, Feb. 11 — George Mandry, Holy Rosary.

Saturday, Feb. 12 (Mass will be celebrated) — Leo Zeller, Holy Family.

Sunday, Feb. 13 — Robert P. Kelly, St. John the Evangelist (Rochester), accompanied by Council No. 178, Knights of Columbus.

Monday, Feb. 14 — Rudolph Schwenzer, St. Joseph's, accompanied by Holy Name Society.

Tuesday, Feb. 15 — Representative of Holy Cross College Alumni.

Wednesday, Feb. 16 — Representative of Holy Uame Society, St. Philip Neri.

Thursday, Feb. 17 — Representative of Holy Name Society, St. George.



Mrs. Eitel and one of her kindergarten pupils at Immaculate Conception.



Sister Regis, R.S.M., home-visitor, giving out boots in clothes room at Mt. Carmel School.



Charles Nadel, Social Worker from the Catholic Family Center with students at St. Bridget's.

This could be heard in your cost health direct to you pected sick your family.

At last, (Mutual F ing in Bea years) has cially for CATHOLIC.

To make i see for you family, we tory" offer.

You ca limited en a company whattover members.

And, a reason you 11, 1968. refunded!

H

What is s Plan-and

As a C Catholic In a Cath ical need having sp tion, you ical treat ethical ar course, e you will Plan, but you go to

You m aged to g have som dering—

Beaus carry, it

Think medical all your hospital supplies

And- wows cov the bills dous and you

If you suddenly penses g insuranc ing your hospital laundry, have to time do

If one you will senior c deny be the "ext

With hospital may-be even rec

How T Now, w Hospita you can or any hospital savings worried no matt any oib any of your fa

CHOO

\$16,000 (\$14.28 each of

\$7,500 M weekly for each \$7,500 weekly for you

\$5,000 (\$14.28 (Note: in