

Participating Memorials Designated at Colleges, Becket Hall

Giving Plan Two

At St. John Fisher College, Nazareth College and Becket Hall, major items in the construction and expansion programs have been reserved as PARTICIPATING MEMORIALS. Joint College Fund Campaign donors who pledge \$10 per month for a 24-month period will share in the expense of providing these much-needed facilities, and their names will be listed in the Memorare Book to be displayed at each institution.

The description of each of the PARTICIPATING MEMORIALS gives evidence of their importance in the overall programs of the three beneficiaries of the Joint College Fund. Their use by young men and women enrolled at St. John Fisher College, Nazareth College and Becket Hall will perpetuate in a living, vital manner the vision and sacrifice of those who joined in making them possible.

Nazareth College

Participating Memorial: The Auditorium

The College will add these new structures to the campus: an Arts Center—combining facilities for the departments of art, music, speech and drama, speech correction, and adding classrooms for general use.

The largest structure of the complex will be the 1100 seat theatre-auditorium. This unit will contain two smaller meeting rooms, the choral and instrumental rehearsal room, the facilities required for stage productions, the speech therapy clinic, a seminar room and six faculty offices.

The two-story Music Wing is in the center of the complex. This wing will contain classrooms, a high fidelity listening room, individual rehearsal rooms, a seminar room and studios for the music faculty.

The predominantly one-story Art Wing will contain sky-lighted studios for ceramics, sculpture, wood, metal, painting, and drafting. Also, a design studio, dark room, small exhibition room, and a departmental office. The lower level will house a graphics studio, seminar room, and the mechanical equipment room.



Auditorium: Large Structure, Lower Left

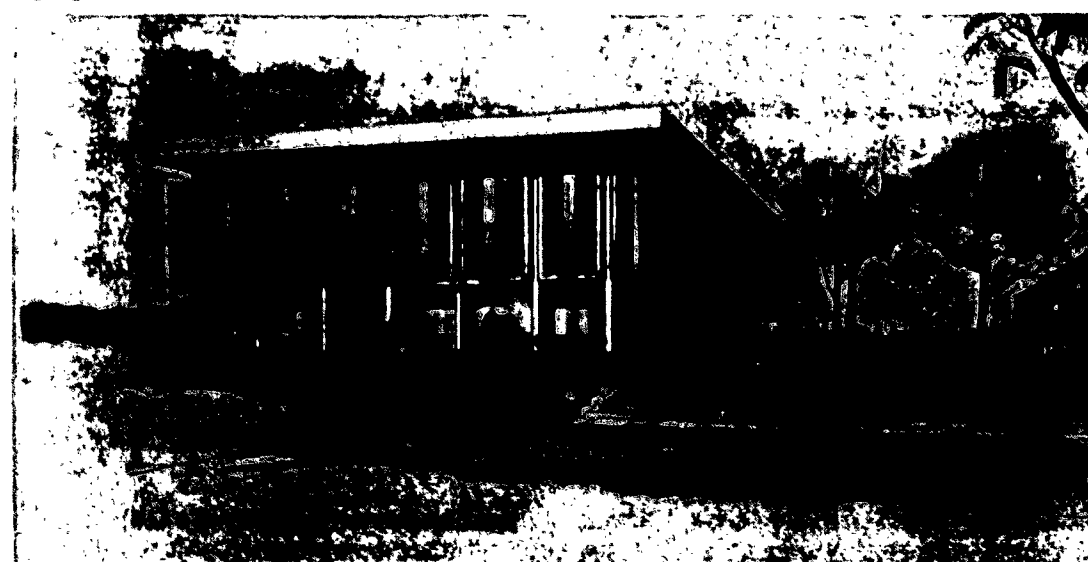
St. John Fisher College

Participating Memorial: The Library

In addition to the main reading room, reference room stack, a mezzanine and multi-use room; the 100,000 volume Library will provide rooms for group study, typing, listening, previewing, and tape recording-cubicles. Key areas include a bibliography room, audio-visual area, graphics preparation room, photographic darkrooms, and a television distribution center.

Plans call for the construction on the campus of a new Science Building, a Library and a Student Center.

The Science Building will be linked to the new classroom and chemistry buildings. All common areas normally found in a Student Center will be provided in a combined academic and residential environment in this new building.



Library Building

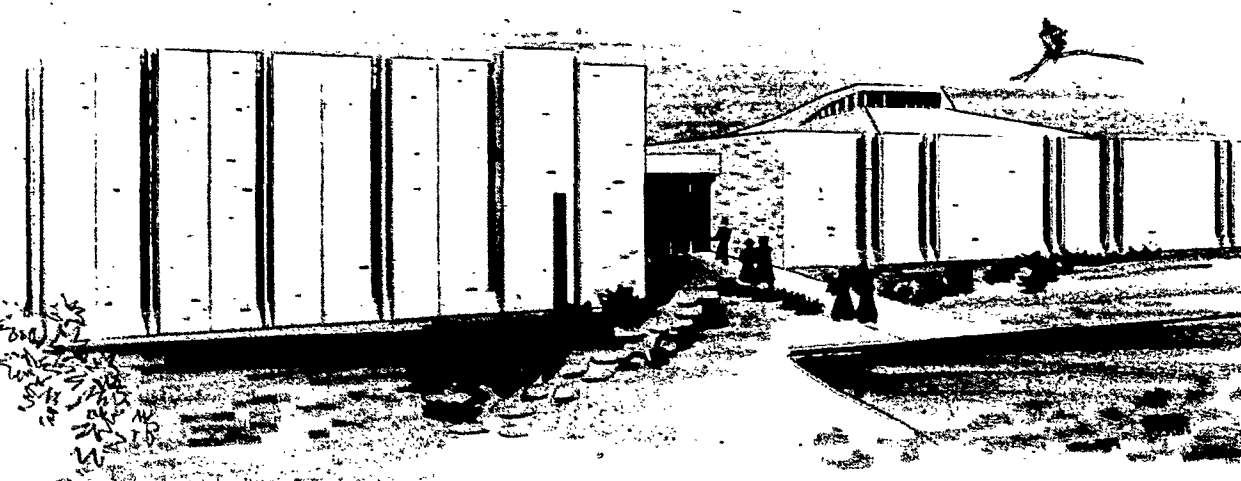
Becket Hall

Participating Memorial: Dormitory Wing

To better prepare our seminarians for their lives of service, each will attend St. John Fisher College for four years to receive academic training leading to bachelor's degrees.

While at St. John Fisher, the future priests will attend the same classes as other students. But since these four years are a part of their seminary program, the focal point of their lives and religious activities will be the new Diocesan House of Studies, which will be their residence.

The dormitory wing of Becket Hall has been reserved to memorialize the generosity of Participating Memorial donors.



Becket Hall . . . Dormitory at Left

" . . . Raising the Standard of Excellence . . . "

Every Catholic a Giver!

EVERY CATHOLIC A SHAREHOLDER

Catholic higher education in the Diocese of Rochester, as represented by Nazareth College and St. John Fisher College, contributes far more to the Church than the basic function of providing liberal arts education may imply.

The Catholic population of the Diocese, in keeping with the national trend, is growing both in cumulative totals and percentages of population. Spiritual leadership for the increasing flock must be provided; more priests must be trained for this vital role.

As the role of the Catholic Church in American life is enhanced, the need for revision and up-dating of programs of academic training for seminarians must be met; new training plans and techniques must be adopted.

New Catholic parochial schools must, in large measure, be staffed with teaching sisters, and those who are already teaching must be given an opportunity to continue their education and keep pace with their contemporaries in public schools.

In the Rochester Diocese, when the "four-four plan" for the training of seminarians was adopted after much prayerful consideration, the immediate question arose: How are the young men to be given the four years of college education the plan requires?

The answer was found at home: At St. John

Fisher College, where a framework of college curricula was already in existence which would provide the priests-in-training with college facilities. Only a residence hall to house the seminarians and to serve as the focal point of their religious life while in college would be needed to place the youths in St. John Fisher classes.

If these facilities at St. John Fisher College had not been available, it would have been necessary for the Diocese of Rochester to construct, from the ground up, a seminary

college for training its priests. This need has been encountered in other dioceses, and the total cost of the new construction is many times the budgeted expenditure for Becket Hall.

Each year, in addition to graduating many young women who accept a religious vocation and become teaching sisters, Nazareth College completes the training of many others who also become teachers, both in parochial and public schools.

Nazareth College also provides advanced studies for the teachers already in charge of classes in parochial schools, and at greatly reduced cost to the parishes and the individuals. The excess cost is absorbed in the operating expenses of Nazareth.

If St. John Fisher College were not available as a site for the college training of seminarians; if Nazareth College were not available for the under-graduate and post-graduate training of teachers, these needs would have to be met in some other fashion. The financial burden to the Catholics of the Diocese would be much greater and become their exclusive responsibility.

The pervasive, positive influences of Nazareth and St. John Fisher are present, then, in every parish from the largest to the smallest. And rare indeed is that Catholic in the Diocese of Rochester who does not enjoy beneficial contact with the efforts of these Catholic institutions of higher learning.

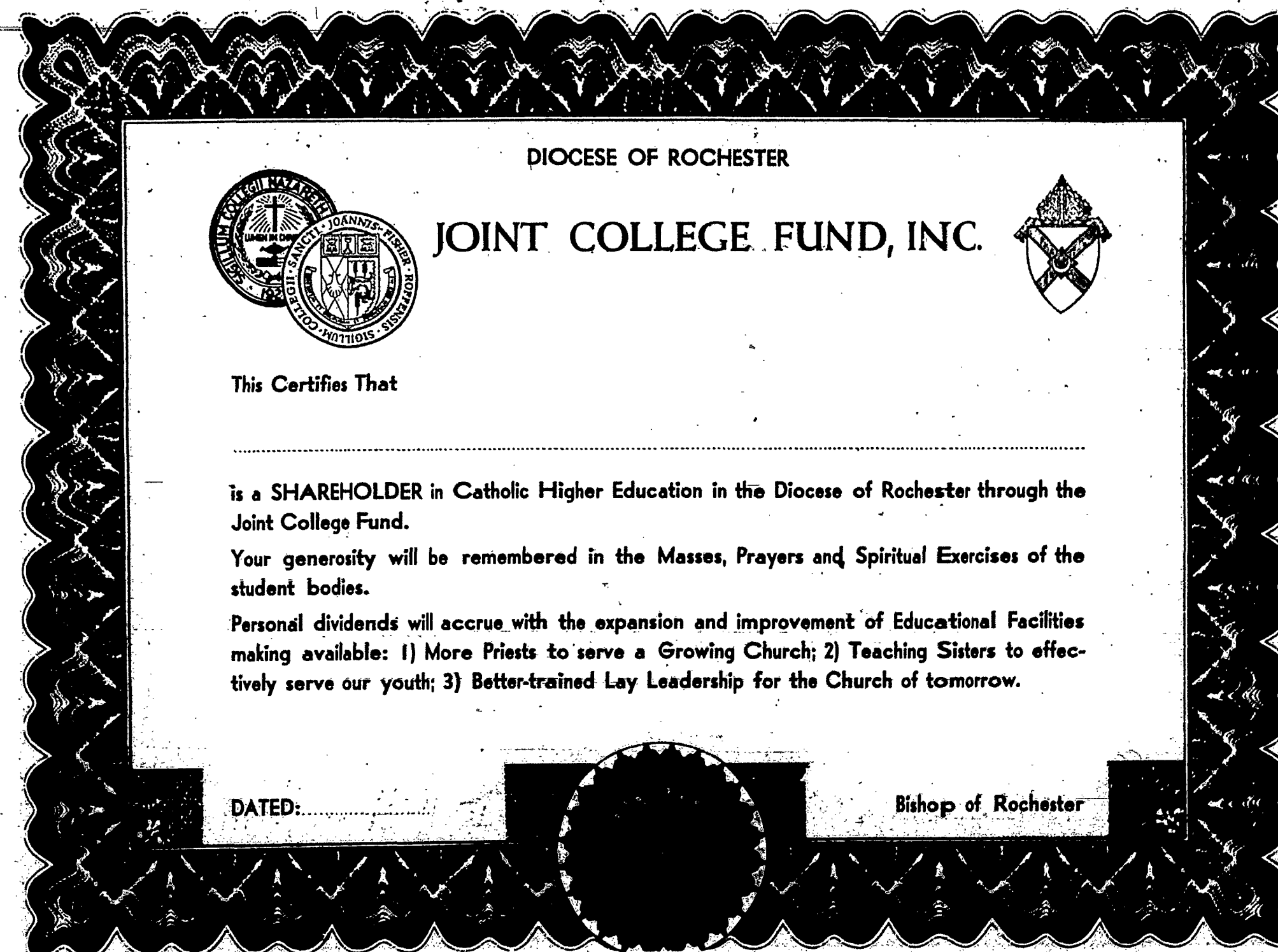
Shareholders' Certificate

GIVING PLAN THREE

\$5 Per Month — 24 Months

The Shareholders' Certificate (illustrated below) is designed for presentation to Joint College Fund contributors who pledge \$5 per month for 24 months. It will be signed by the Bishop of Rochester and is suitable for framing. The Shareholders' Certificate makes it possible for every Catholic to participate in this historic Fund Campaign and will be treasured as a lasting token of recognition for the holder's sacrificial giving.

The answer was found at home: At St. John



" . . . Raising the Standard of Excellence . . . "